

WAAS CH 78332 W26A	APP CRS 261°	Rwy Idg 6330 TDZE 587 Apt Elev 595
--	------------------------	---

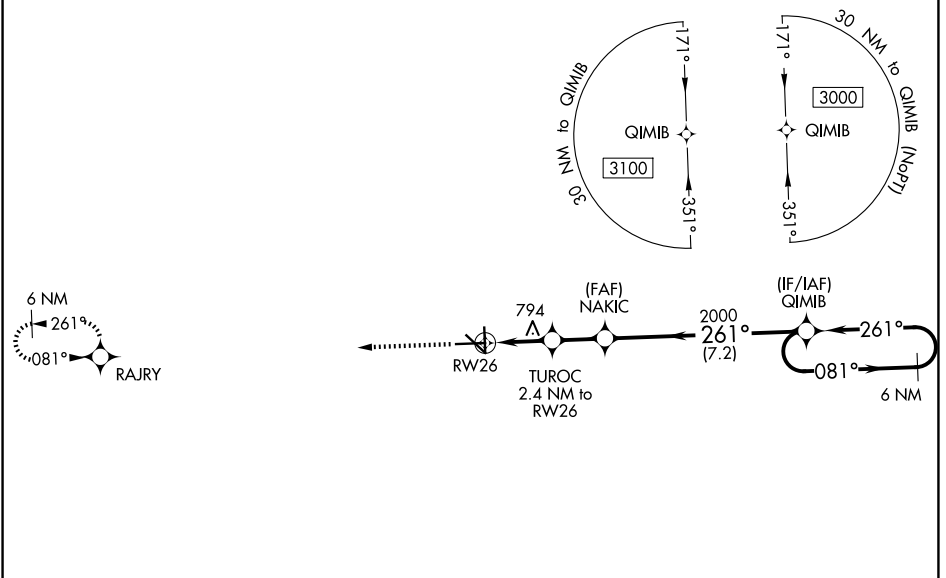
RNAV (GPS) RWY 26

SAN MARCOS RGNL (HYI)

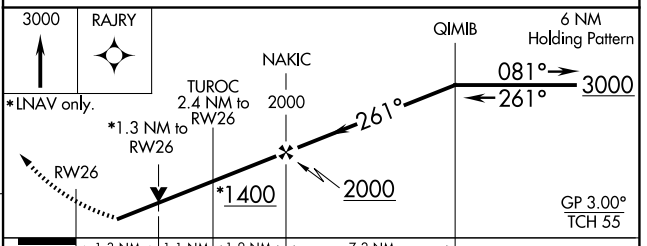
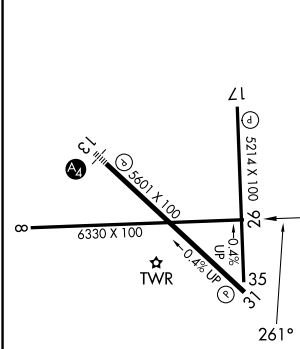
▼ Baro-VNAV NA when using New Braunfels altimeter setting. For uncompensated Baro-VNAV systems, LNAV/VNAV NA below -16°C (3°F) or above 54°C (130°F). When local altimeter setting not received, use New Braunfels altimeter setting and increase all DA 43 feet and all MDA 60 feet; increase LPV and LNAV/VNAV all Cats, and LNAV Cat C/D/E visibility 1/8 mile and Circling Cat C/D visibility 1/4 mile. Circling NA for Cat E SW of Rwy 13-31. DME/DME RNP-0.3 NA. VDP NA with New Braunfels altimeter setting. Helicopter visibility reduction below 3/4 SM NA.

MISSED APPROACH: Climb to 3000 direct RAJRY and hold.

ATIS 120.825	AUSTIN APP CON 119.0 370.85	SAN MARCOS TOWER ★ 126.825 (CTAF)	GND CON 120.125
------------------------	---------------------------------------	---	---------------------------



ELEV 595	TDZE 587
-----------------	-----------------



CATEGORY	A	B	C	D	E
LPV DA		837-3/4	250 (300-3/4)		
LNAV/VNAV DA		866-7/8	279 (300-7/8)		
LNAV MDA	1060-1	473 (500-1)	1060-1 3/8	473 (500-1 3/8)	
CIRCLING	1080-1 485 (500-1)	1120-1 525 (600-1)	1240-1 3/4 645 (700-1 3/4)	1320-2 1/4 725 (800-2 1/4)	1340-2 3/4 745 (800-2 3/4)

SC-3, 16 APR 2026 to 14 MAY 2026

SC-3, 16 APR 2026 to 14 MAY 2026