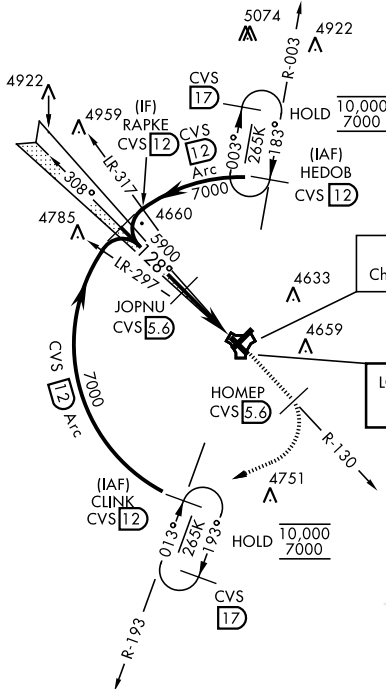


ILS or LOC RWY 13

LOC I-OVI 110.35	APCH CRS 128°	Rwy Idg 8194 TDZE 4294 Arprt Elev 4295	[USAF]	CANNON AFB (KCVS)
----------------------------	-------------------------	--	--------	-------------------

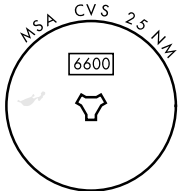
RADAR or DME required. Missed approach requires use of RNAV or RADAR monitoring.	SSALR (A3)	MISSED APPROACH: Climb to 6000 out CVS TACAN R-1305.6 DME (HOMEP) then climbing right turn to 7000 intercept CVS R-193 to 12 DME (CLINK) and hold.
<p>* When ALS inop, increase vis to 3/4 mile.</p> <p>** When ALS inop, increase CAT AB vis to 1 mile; CAT CDE vis to 1 3/8 miles.</p>		

ATIS 119.1 269.9	CANNON APP CON 118.425 352.1	CANNON TOWER 120.4 270.25	GND CON 121.9 275.8	CLNC DEL 120.2 293.225
----------------------------	--	-------------------------------------	-------------------------------	----------------------------------

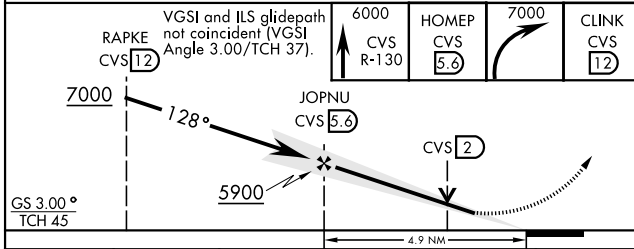


CANNON
Chan 53 CVS

LOCALIZER **110.35**
I-OVI



EMERG SAFE ALT 100 NM 8000



ELEV	4295	TDZE	4294
128°	4525	4433	(A1)
4327	TWR	4437	(A3)
(A3)	(P)	(P)	(P)
(A1)	(P)	(P)	(P)
(A3)	(P)	(P)	(P)
HIRL all rwys			
FAF to MAP 4.9 NM			
Knots	60	90	120 150 180
Min:Sec	4:54	3:16	2:27 1:58 1:38

CATEGORY	A	B	C	D	E
S-ILS 13 *	4544-1/2		250	(300-1/2)	
S-LOC 13**	4760-1/2 466 (500-1/2)		4760-1 466 (500-1)		
CIRCLING	4840-1 545 (600-1)		4860-1 1/2 565(600-1 1/2)	5000-2 1/4 705(800-2 1/4)	5020-2 1/2 725(800-2 1/2)

ILS or LOC RWY 13

SW-1, 16 APR 2026 to 14 MAY 2026

SW-1, 16 APR 2026 to 14 MAY 2026