

ILS or LOC RWY 31

LOC I-BNN 108.3	APCH CRS 308°	Rwy Idg 8194
		TDZE 4270
		Arprt Elev 4295

[USAF]

CANNON AFB (KCVS)

ATC RADAR or DME required. Missed approach requires use of RNAV or ATC RADAR monitoring.

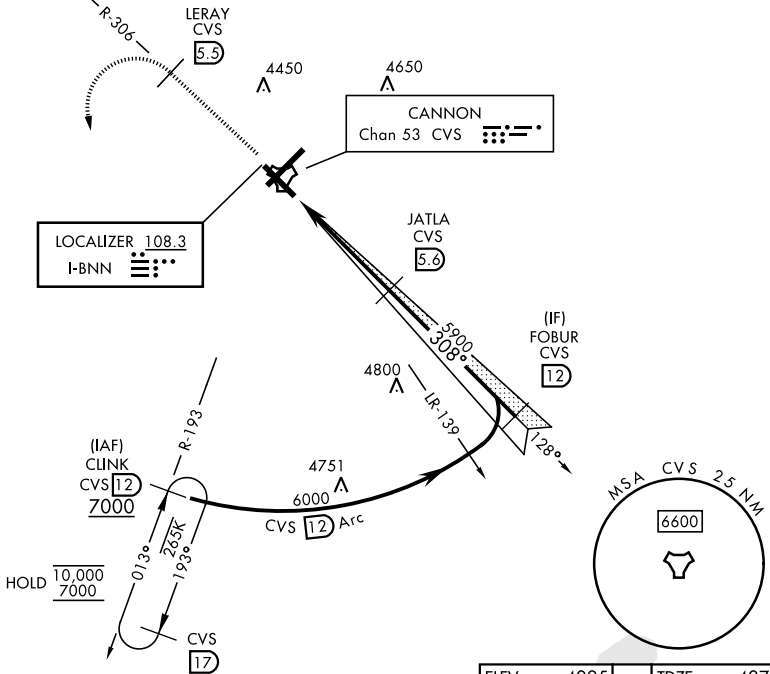


MISSED APPROACH: Climb to 6000 out CVS TACAN R-306 to 5.5 DME (LERAY) then turn left climbing to 7000 intercept CVS R-193 to 12 DME (CLINK) and hold.

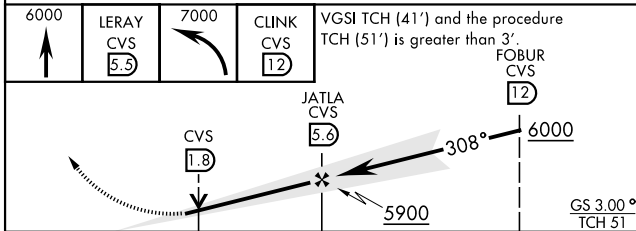
* When ALS inop, increase vis to ¼ mile.

ATIS 119.1 269.9	CANNON APP CON 118.425 352.1	CANNON TOWER 120.4 270.25	GND CON 121.9 275.8	CLNC DEL 120.2 293.225
----------------------------	--	-------------------------------------	-------------------------------	----------------------------------

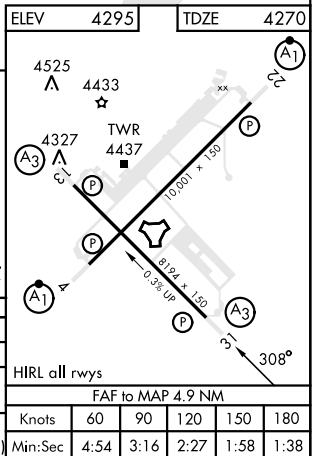
** When ALS inop, increase CAT AB vis to 1 mile, CAT CDE vis to 1 ½ miles.



EMERG SAFE ALT 100 NM 9000



CATEGORY	A	B	C	D	E
S-ILS 31*	4470-½		200	(200-½)	
S-LOC 31**	4660-½ 390 (400-½)		4660-5/8 390 (400-5/8)		
CIRCLING	4840-1 545 (600-1)		4860-1½ 565 (600-1½)	5000-2¼ 705 (800-2¼)	5020-2½ 725 (800-2½)



ILS or LOC RWY 31

SW-1, 16 APR 2026 to 14 MAY 2026

SW-1, 16 APR 2026 to 14 MAY 2026