

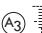
CLOVIS, NEW MEXICO

RNAV (GPS) RWY 13

APCH CRS **128°**
 Rwy Idg **8194**
 TDZE **4294**
 Arprt Elev **4295**

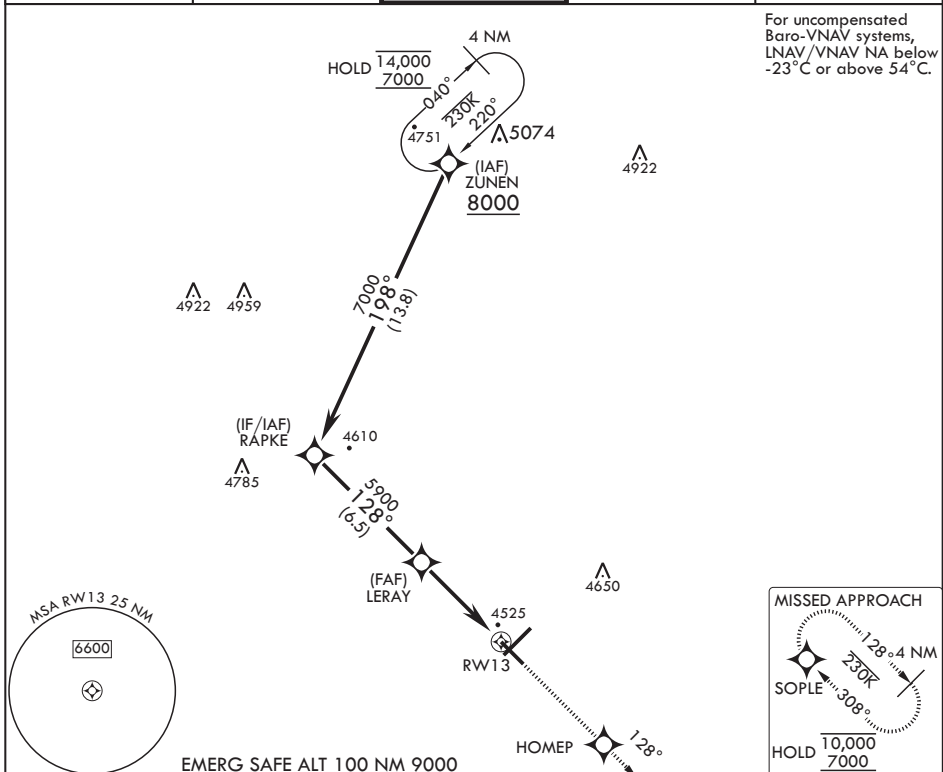
(USAF)

CANNON AFB (KCVS)

RNP APCH SSALR  MISSED APPROACH: Climb to 7000 direct HOME P, then track 128° to SOPLE and hold.

▼ * When ALS inop increase vis to 1 3/8 miles.
 ** When ALS inop, increase CAT AB vis to 1 mile, CAT CDE vis to 1 1/2 miles.

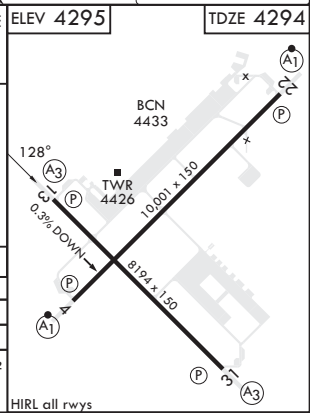
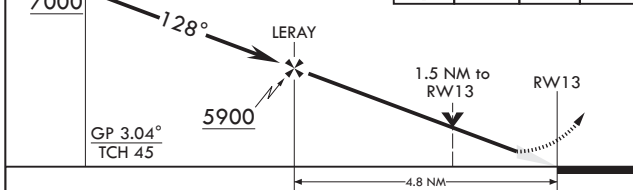
ATIS 119.1 269.9	CANNON APP CON 118.425 352.1	TOWER 120.4 270.25	GND CON 121.9 275.8	CLNC DEL 120.2 293.225
----------------------------	--	------------------------------	-------------------------------	----------------------------------



EMERG SAFE ALT 100 NM 9000

RAPKE	7000	HOME P	tr 128°	SOPLE	ELEV 4295	TDZE 4294
-------	------	--------	---------	-------	-----------	-----------

VGSI and RNAV glidepath not coincident (VGSI Angle 3.00/TCH 37).



CATEGORY	A	B	C	D	E
LNAV/VNAV DA*	4766-1		472	(500-1)	
LNAV MDA**	4820-½ 526 (600-½)		4820-1	526	(600-1)
CIRCLING	4840-1 545 (600-1)		4860-1½ 565 (600-1½)	5000-2¼ 705 (800-2¼)	5020-2½ 725 (800-2½)

CLOVIS, NEW MEXICO
 Amdt 4 07OCT21

34°23'N - 103°19'W

CANNON AFB (KCVS)

RNAV (GPS) RWY 13

SW-1, 16 APR 2026 to 14 MAY 2026

SW-1, 16 APR 2026 to 14 MAY 2026