

CLOVIS, NEW MEXICO

# TACAN RWY 13

TACAN CVS Chan 53	APCH CRS 120°	Rwy ldg 8194
		TDZE 4294
		Arprt Elev 4295

[USAF]

CANNON AFB (KCVS)

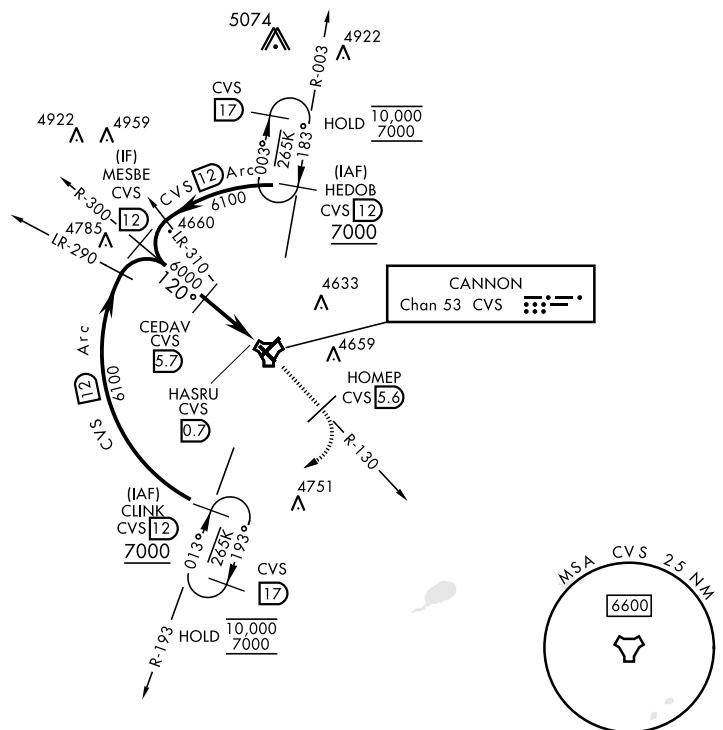
Missed approach requires use of RNAV or RADAR monitoring.

SSALR

MISSED APPROACH: Climb to 6000 out CVS TACAN R-130 to 5.6 DME (HOMEP) then turn right climbing to 7000 intercept CVS R-193 to 12 DME (CLINK) and hold.

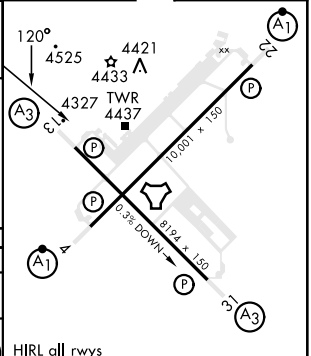
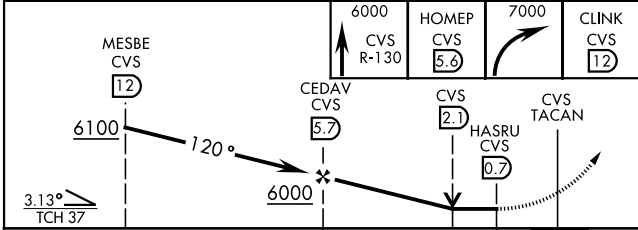
▼ \* When ALS inop, increase CAT AB vis to 1 mile, CAT CDE vis to 1 3/8 miles.

ATIS 119.1 269.9	CANNON APP CON 118.425 352.1	CANNON TOWER 120.4 270.25	GND CON 121.9 275.8	CLNC DEL 120.2 293.225
---------------------	---------------------------------	------------------------------	------------------------	---------------------------



EMERG SAFE ALT 100 NM 9000

ELEV	4295	TDZE	4294
------	------	------	------



CATEGORY	A	B	C	D	E
S-13*	4800-3/4	506 (600-3/4)	4800-1	506	(600-1)
CIRCLING	4840-1	545 (600-1)	4860-1 1/2 565 (600-1 1/2)	5000-2 1/4 705 (800-2 1/4)	5020-2 1/2 725 (800-2 1/2)

HIRL all rwys

CLOVIS, NEW MEXICO  
Amdt 2 09NOV17

34° 23'N-103° 19'W

CANNON AFB (KCVS)

# TACAN RWY 13

SW-1, 16 APR 2026 to 14 MAY 2026

SW-1, 16 APR 2026 to 14 MAY 2026