

# TACAN RWY 22

TACAN CVS Chan <b>53</b>	APCH CRS <b>212°</b>	Rwy Idg TDZE Arprt Elev <b>10,001</b> <b>4295</b> <b>4295</b>
-----------------------------	-------------------------	--

[USAF]

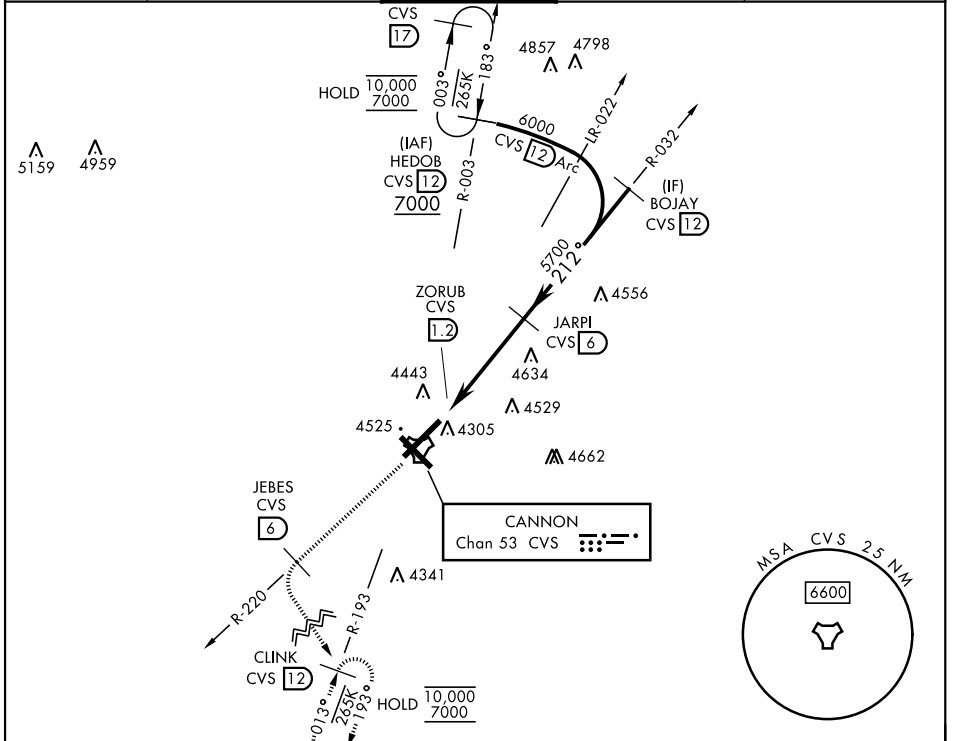
CANNON AFB (KCVS)

Missed approach requires use of RNAV or RADAR monitoring. ALSIF-1 

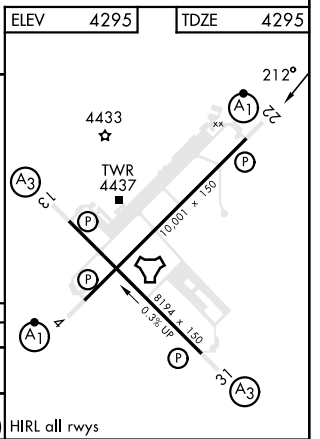
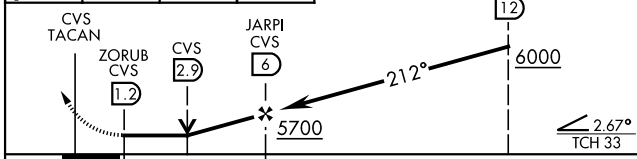
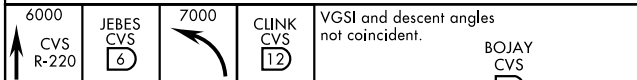
**▼** \* When ALS inop, increase CAT AB RVR to 55 and vis to 1 mile, increase CAT CDE vis to 1 3/4 miles.

MISSED APPROACH: Climb to 6000 out CVS TACAN R-220 to 6 DME (JEBES) then climbing left turn to 7000 intercept CVS R-193 to 12 DME (CLINK) and hold.

ATIS <b>119.1 269.9</b>	CANNON APP CON <b>118.425 352.1</b>	CANNON TOWER <b>120.4 270.25</b>	GND CON <b>121.9 275.8</b>	CLNC DEL <b>120.2 293.225</b>
----------------------------	--	-------------------------------------	-------------------------------	----------------------------------



ELEV 4295	TDZE 4295
-----------	-----------



CATEGORY	A	B	C	D	E
S-22 *	4900/24	605 (700-1/2)	4900-1 3/4	605 (700-1 3/4)	
CIRCLING	4900-1	605 (700-1)	4900-1 3/4 605 (700-1 3/4)	5000-2 1/4 705 (800-2 1/4)	5020-2 1/2 725 (800-2 1/2)

HIRL all rwys

# TACAN RWY 22

SW-1, 16 APR 2026 to 14 MAY 2026

SW-1, 16 APR 2026 to 14 MAY 2026