

CLOVIS, NEW MEXICO

TACAN RWY 4


TACAN CVS Chan 53	APCH CRS 048°	Rwy ldg TDZE 10,001 4284	Arprt Elev 4295
----------------------	------------------	--------------------------------	--------------------

(USAF)

CANNON AFB (KCVS)

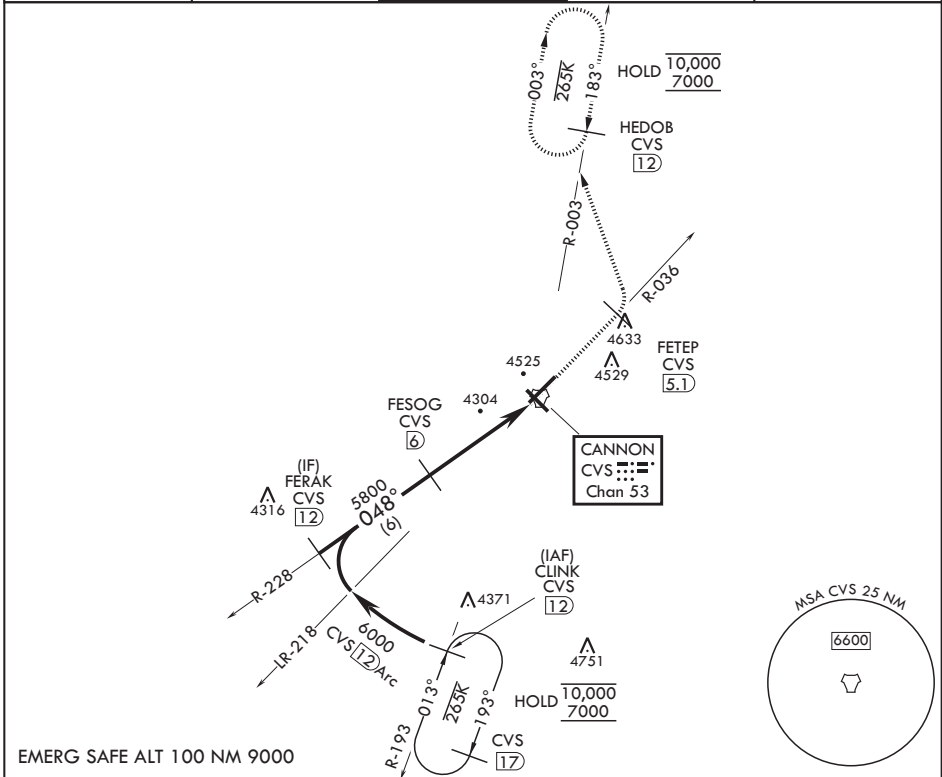
Missed approach requires use of RNAV or ATC radar monitoring.

▼ * When ALS inop, increase CAT AB RVR to 55, vis to 1 mile; CAT CDE RVR to 60, vis to 1 1/8 miles.

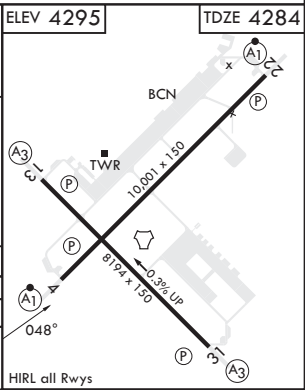
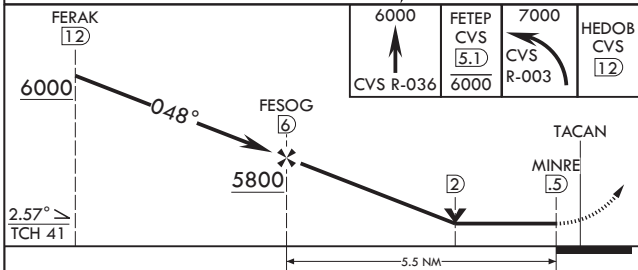
ALSF-1


 MISSED APPROACH: Climb to 6000 via CVS TACAN R-036 to 5.1 DME (FETEP), cross FETEP at or below 6000, then turn left climbing to 7000 to intercept CVS TACAN R-003 to 12 DME (HEDOB) and hold.

ATIS 119.1 269.9	CANNON APP CON 118.425 352.1	TOWER 120.4 270.25	GND CON 121.9 275.8	CLNC DEL 120.2 293.225
---------------------	---------------------------------	-----------------------	------------------------	---------------------------



EMERG SAFE ALT 100 NM 9000



CATEGORY	A	B	C	D	E
S-4*	4700/24 416 (500-½)		4700/40 416		(500-¾)
CIRCLING	4840-1 545 (600-1)		4860-1½ 565 (600-1½)	5000-2¼ 705 (800-2¼)	5020-2½ 725 (800-2½)

CLOVIS, NEW MEXICO

34°23'N - 103°19'W

CANNON AFB (KCVS)

Amdt 3 10OCT19

TACAN RWY 4

SW-1, 16 APR 2026 to 14 MAY 2026

SW-1, 16 APR 2026 to 14 MAY 2026