

APP CRS	Rwy Ldg	<b>9400</b>
<b>242°</b>	TDZE	<b>7680</b>
	Apt Elev	<b>7680</b>

# RNAV (RNP) RWY 24

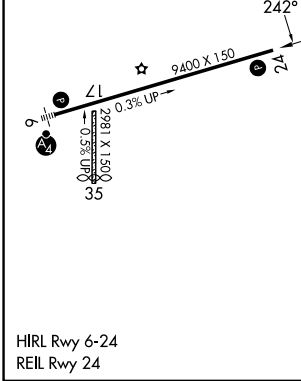
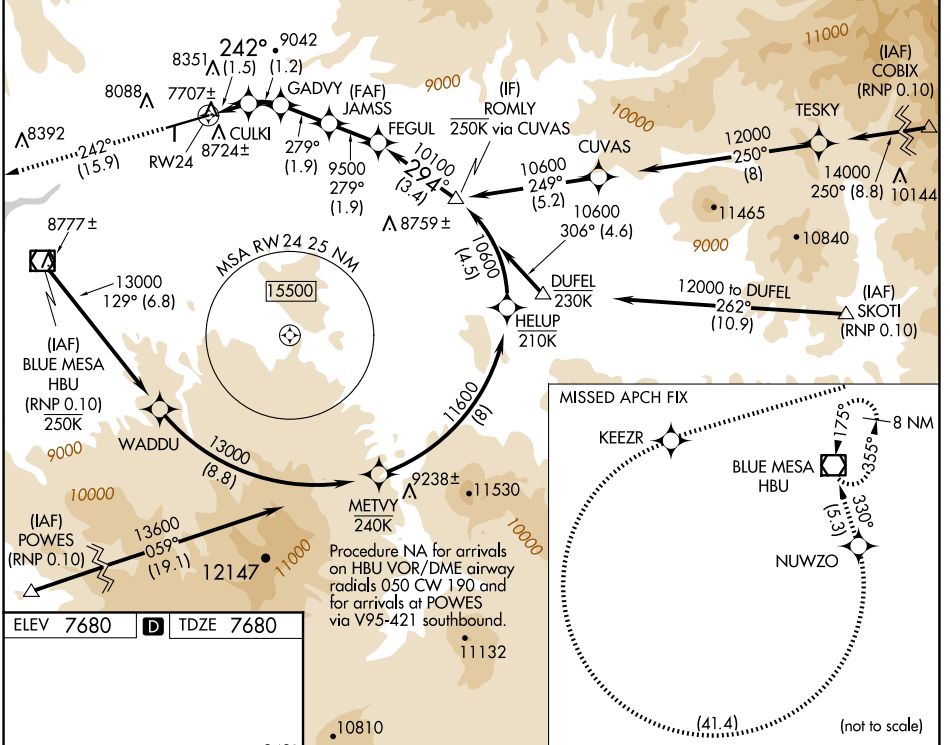
GUNNISON-CRESTED BUTTE RGNL (GUC)

RNP AR APCH - GPS, RF, min RNP 0.10. Authorization required.

**▼** When local altimeter setting not received, procedure NA.  
**❄** -25°C Procedure NA for aircraft with wingspan greater than 136 feet. For uncompensated Baro-VNAV systems, procedure NA below -29°C or above 24°C.

MISSED APPROACH: Climb to 14000 on track 242° to KEEZR, and left turn to NUWZO, and on track 330° to HBU VOR/DME and hold.  
 Missed approach requires minimum climb of 425 feet per NM to 9000.

AWOS-3PT <b>135.075</b>	DENVER CENTER <b>124.5 350.25</b>	UNICOM <b>122.7 (CTAF) 0</b>
----------------------------	--------------------------------------	---------------------------------



ELEV 7680	<b>D</b>	TDZE 7680		
14000	KEEZR	NUWZO	VGSI and RNAV glidepath not coincident (VGSI Angle 3.60/TCH 71).	ROMLY
tr 242°				
	CULKI	GADVY	JAMSS	FEGUL
	8320	8776	9500	10100
			279°	294°
			9500	
				Procedure Turn NA GP 3.60° TCH 65
	1.5 NM	1.2 NM	1.9 NM	1.9 NM
			3.4 NM	
CATEGORY	A	B	C	D
RNP 0.10 DA	8029-1 349 (400-1)			NA
<b>AUTHORIZATION REQUIRED</b>				

SW-1, 16 APR 2026 to 14 MAY 2026

SW-1, 16 APR 2026 to 14 MAY 2026