

WAAS CH <b>90124</b> <b>W31A</b>	APP CRS <b>308°</b>	Rwy Ldg TDZE Apt Elev	<b>7000</b> <b>590</b> <b>598</b>
--	------------------------	-----------------------------	---

# RNAV (GPS) RWY 31

ABRAHAM LINCOLN CAPITAL (SPI)

RNP APCH - GPS.

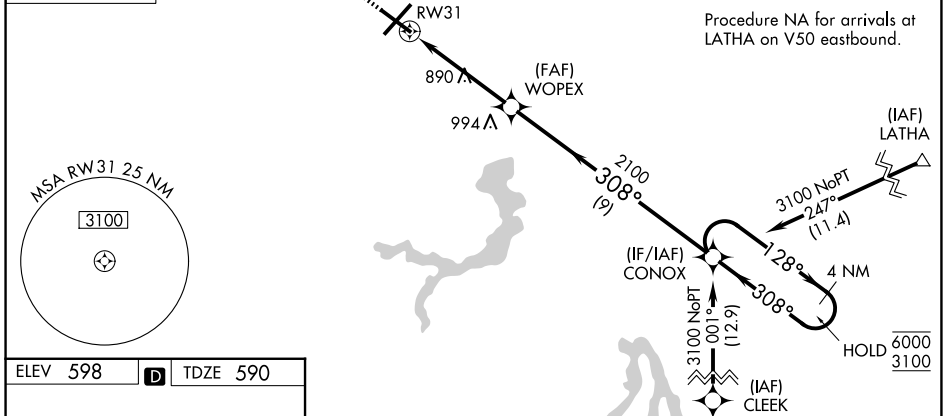
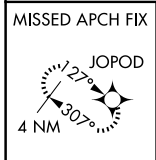
Baro-VNAV and VDP NA when using AAA altimeter setting. Inop table does not apply to LPV.  
 For uncompensated Baro-VNAV systems, LNAV/VNAV NA below -16°C or above 54°C. When local altimeter setting not received, use AAA altimeter setting and increase LPV DA to 898 feet; increase LNAV/VNAV DA to 967 feet; increase all MDAs 60 feet and LNAV visibility Cats C and D ½ SM, and Circling visibility Cats C and D ¼ SM. For inop ALS, increase LNAV/VNAV visibility all Cats to ¾ SM, increase LNAV visibility Cats A and B to 1 SM, and Cats C and D to 1 ¼ SM. For inop ALS when using AAA altimeter setting, increase LPV visibility all Cats to ¾ SM, increase LNAV/VNAV visibility all Cats to 1 SM, increase LNAV visibility Cats A and B to 1 SM, and Cats C and D to 1 ¼ SM.

MALSR

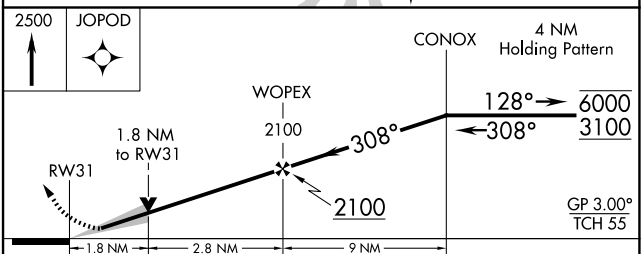
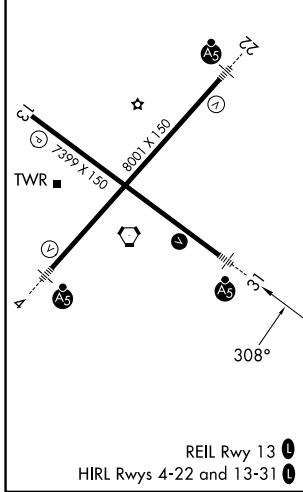


MISSED APPROACH:  
Climb to 2500 direct JOPOD and hold.

ATIS <b>127.65 270.1</b>	SAINT LOUIS APP CON <b>126.15 323.0</b>	SPRINGFIELD TOWER * <b>121.3 (CTAF) 0 257.8</b>	GND CON <b>121.9 348.6</b>	UNICOM <b>122.95</b>
-----------------------------	--	--	-------------------------------	-------------------------



ELEV 598	<b>D</b>	TDZE 590
----------	----------	----------



CATEGORY	A	B	C	D
LPV DA		840-¾	250 (300-¾)	
LNAV/VNAV DA		909-¾	319 (400-¾)	
LNAV MDA	1200-¾	610 (700-¾)	1200-1¾	610 (700-1¾)
CIRCLING	1200-1	602 (700-1)	1360-2¼	1380-2½
			762 (800-2¼)	782 (800-2½)

EC-3, 16 APR 2026 to 14 MAY 2026

EC-3, 16 APR 2026 to 14 MAY 2026