

|  |                        |                             |   |
|--|------------------------|-----------------------------|---|
| WAAS<br>CH <b>70309</b><br><b>W04A</b> | APP CRS<br><b>043°</b> | Rwy Ldg<br>TDZE<br>Apt Elev | <b>7927</b><br><b>592</b><br><b>598</b> |
|--|------------------------|-----------------------------|---|

# RNAV (GPS) RWY 4

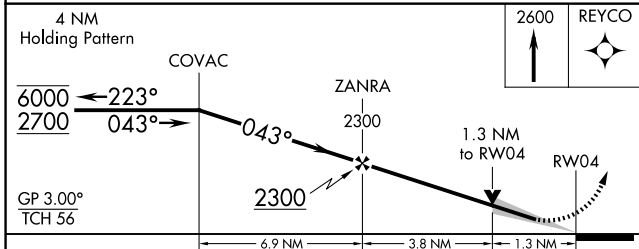
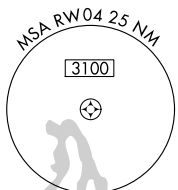
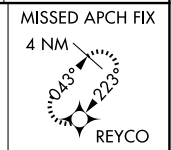
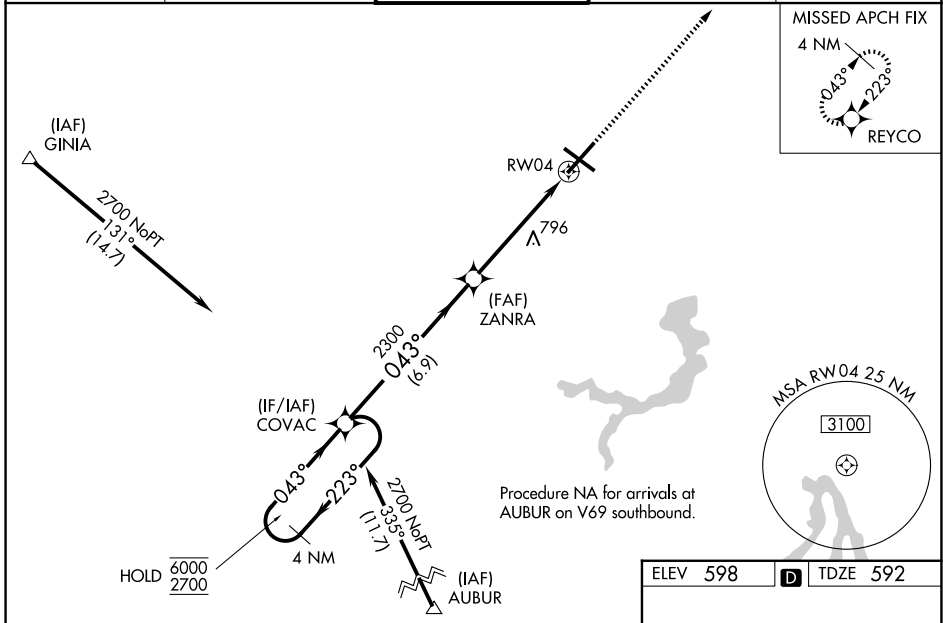
ABRAHAM LINCOLN CAPITAL (SPI)

RNP APCH - GPS.

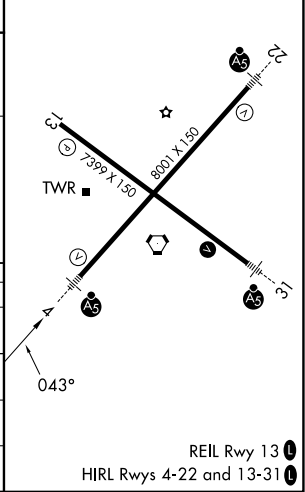
**ASR** For uncompensated Baro-VNAV systems, LNAV/VNAV NA below -16°C or above 54°C. Baro-VNAV and VDP NA when using AAA altimeter setting. For inop ALS, increase LPV all Cats visibility to RVR 4500 and LNAV Cats C and D visibility to 1 3/8 SM. When local altimeter setting not received, use AAA altimeter setting and increase LPV DA to 912 feet; increase LNAV/VNAV DA to 989 feet and all visibilities to RVR 3500; increase all MDAs 60 feet and LNAV visibility Cats C and D to RVR 5500 and Circling visibility Cats C and D 1/4 SM. For inop ALS when using AAA altimeter setting, increase LPV all Cats visibility to RVR 4500.

**MALSR** MISSED APPROACH: Climb to 2600 direct REYCO and hold.

|                             |  |  |                               |                         |
|-----------------------------|--|--|-------------------------------|-------------------------|
| ATIS<br><b>127.65 270.1</b> | SAINT LOUIS APP CON<br><b>126.15 323.0</b> | SPRINGFIELD TOWER ★<br><b>121.3 (CTAF) 257.8</b> | GND CON<br><b>121.9 348.6</b> | UNICOM<br><b>122.95</b> |
|-----------------------------|--|--|-------------------------------|-------------------------|



|          |                   |
|----------|-------------------|
| ELEV 598 | <b>D</b> TDZE 592 |
|----------|-------------------|



| CATEGORY     | A                     | B                     | C                             | D                             |
|--------------|-----------------------|-----------------------|-------------------------------|-------------------------------|
| LPV DA       |                       | 854/24                | 262 (300-1/2)                 |                               |
| LNAV/VNAV DA |                       | 931/26                | 339 (400-1/2)                 |                               |
| LNAV MDA     | 1060/24               | 468 (500-1/2)         | 1060/50                       | 468 (500-1)                   |
| CIRCLING     | 1060-1<br>462 (500-1) | 1100-1<br>502 (600-1) | 1360-2 1/4<br>762 (800-2 1/4) | 1380-2 1/2<br>782 (800-2 1/2) |

EC-3, 16 APR 2026 to 14 MAY 2026

EC-3, 16 APR 2026 to 14 MAY 2026