

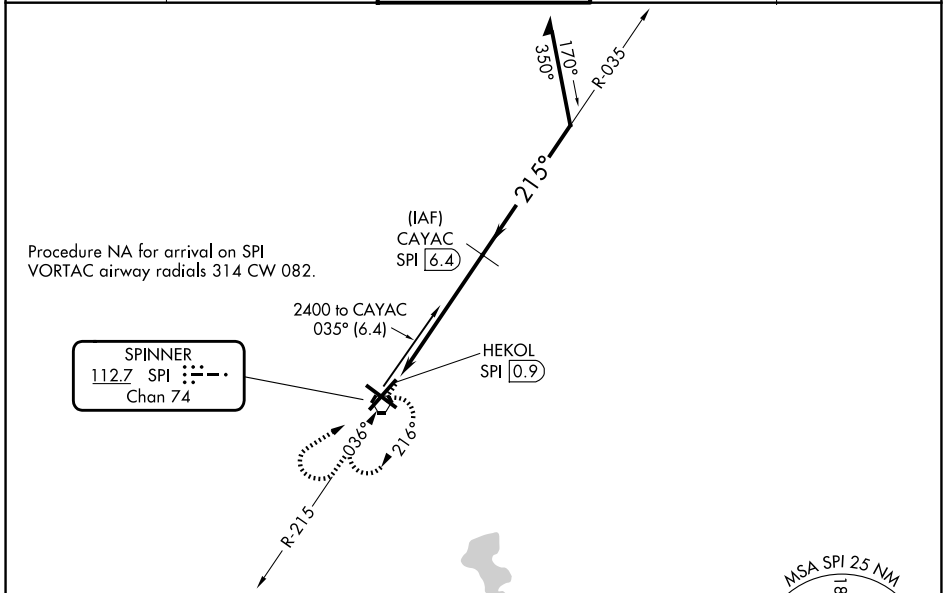
VORTAC SPI <b>112.7</b> Chan <b>74</b>	APP CRS <b>215°</b>	Rwy Ldg TDZE Apt Elev	<b>8001</b> <b>598</b> <b>598</b>
--	------------------------	-----------------------------	---

# VOR RWY 22

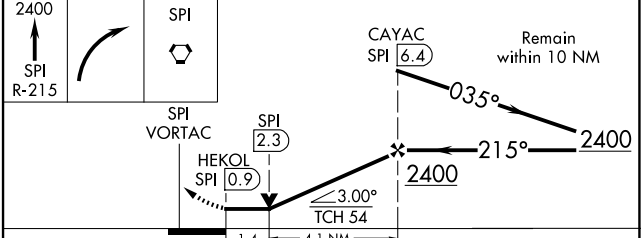
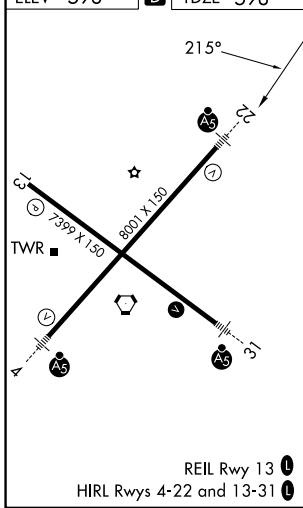
ABRAHAM LINCOLN CAPITAL (SPI)

DME required.		MALSR 	MISSED APPROACH: Climb to 2400 on SPI VORTAC R-215 then right turn direct SPI VORTAC and hold.
<p>VDP NA when using AAA altimeter setting. When local altimeter setting not received, use AAA altimeter setting: increase all MDA 60 feet and S-22 visibility Cat C/D ¼ SM, and Circling Cat C/D visibility ¼ SM. For inop ALS, increase S-22 Cat C/D visibility to 1 ½ SM. For inop ALS when using AAA altimeter setting, increase S-22 Cat C/D visibility to 1 ½ SM.</p>			

ATIS <b>127.65 270.1</b>	SAINT LOUIS APP CON <b>126.15 323.0</b>	SPRINGFIELD TOWER ★ <b>121.3 (CTAF) 0 257.8</b>	GND CON <b>121.9 348.6</b>	UNICOM <b>122.95</b>
-----------------------------	--	--	-------------------------------	-------------------------



ELEV 598	<b>D</b>	TDZE 598
----------	----------	----------



CATEGORY	A	B	C	D
S-22	1100-½	502 (600-½)	1100-1	502 (600-1)
CIRCLING	1100-1	502 (600-1)	1360-2¼ 762 (800-2¼)	1380-2½ 782 (800-2½)

# VOR RWY 22

EC-3, 16 APR 2026 to 14 MAY 2026

EC-3, 16 APR 2026 to 14 MAY 2026