

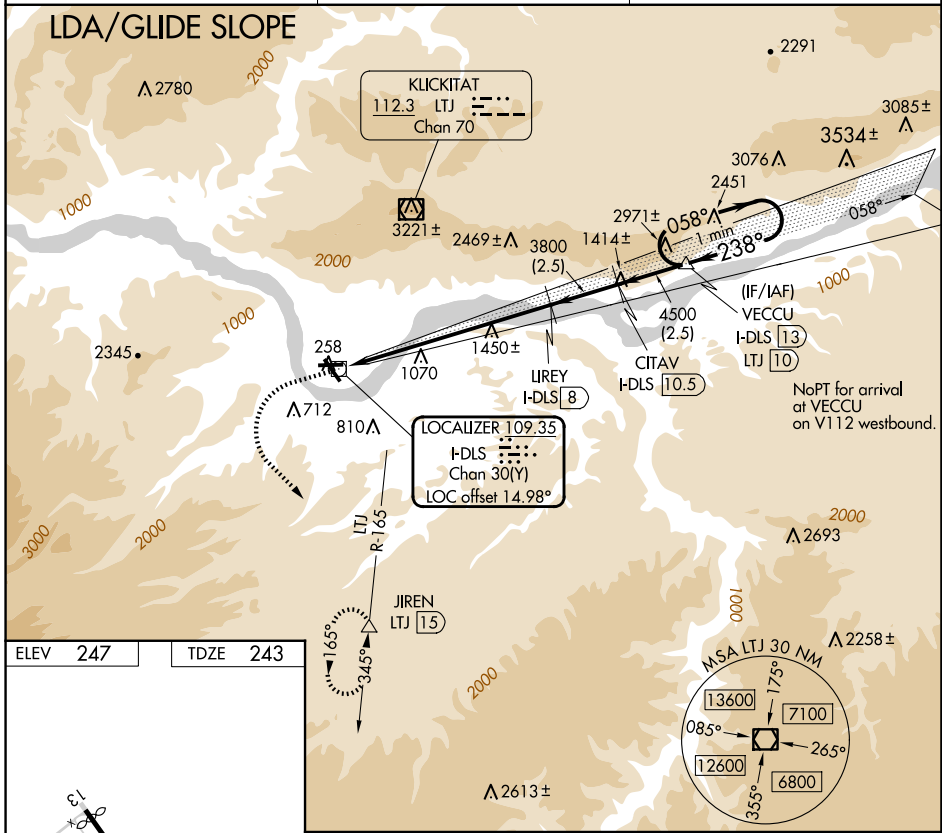
LOC/DME I-DLS <b>109.35</b> Chan 30(Y)	APP CRS <b>238°</b>	Rwy Idg TDZE <b>4451</b> <b>243</b>	Apt Elev <b>247</b>
--	------------------------	---	------------------------

# LDA/DME RWY 25

COLUMBIA GORGE RGNL/THE DALLES MUNI(DLS)

<p>When local altimeter setting not received, procedure NA. Glide slope provided by standard glide slope equipment.</p>	<p>MISSED APPROACH: Climb to 1600 then climbing left turn to 7000 on heading 120° and LTJ VOR/DME R-165 to JIREN/LTJ 15 DME and hold, continue climb-in-hold to 7000.</p>	
---	---	--

ASOS <b>135.175</b>	SEATTLE CENTER <b>119.65 257.6</b>	UNICOM <b>123.0 (CTAF) 0</b>
------------------------	---------------------------------------	---------------------------------



ELEV 247	TDZE 243	Use I-DLS DME when on the localizer course.	
1600	7000	LTJ R-165	JIREN
↑	hdg 120°		
		LIREY I-DLS 8	CITAV I-DLS 10.5
		VECCU I-DLS 13	
		One Minute Holding Pattern	
		5300	
		058° → ← 238°	
		GS 4.20°	
		TCH 43	
		7.9 NM 2.5 NM 2.5 NM	

CATEGORY	A	B	C	D
S-LDA/GS 25	1368-3	1125 (1200-3)		NA

NW-1, 16 APR 2026 to 14 MAY 2026

NW-1, 16 APR 2026 to 14 MAY 2026