

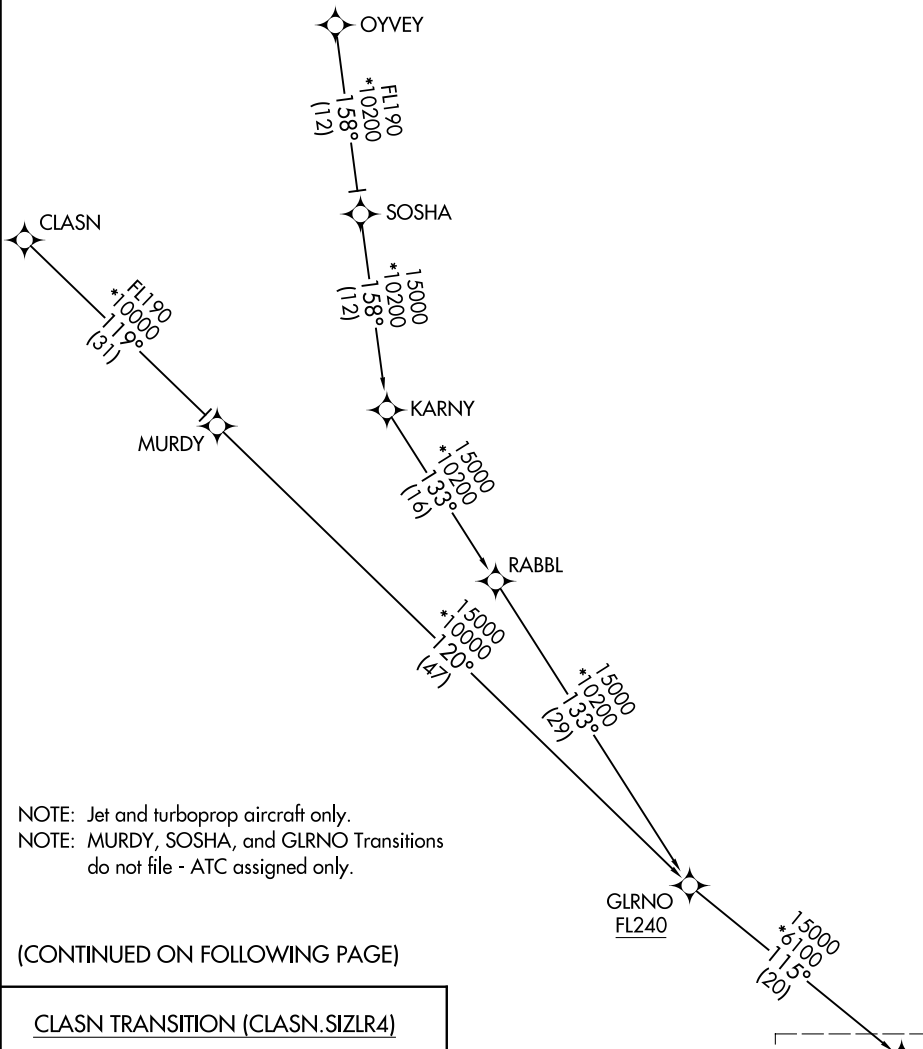
SIZL FOUR ARRIVAL (RNAV) Transition Routes

PALM SPRINGS, CALIFORNIA

RNAV 1 - DME/DME/IRU or GPS.

RADAR required.

SOCAL APP CON
 134.0 278.3
 PSP ATIS
 124.65
 PALM SPRINGS TOWER*
 119.7 377.05

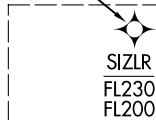


NOTE: Jet and turboprop aircraft only.
 NOTE: MURDY, SOSHA, and GLRNO Transitions do not file - ATC assigned only.

(CONTINUED ON FOLLOWING PAGE)

- CLASN TRANSITION (CLASN.SIZL4)
- GLRNO TRANSITION (GLRNO.SIZL4)
- MURDY TRANSITION (MURDY.SIZL4)
- OYVEY TRANSITION (OYVEY.SIZL4)
- SOSHA TRANSITION (SOSHA.SIZL4)

NOTE: Chart not to scale.



SIZL
 FL230
 FL200

See following page for arrival routes

SW-3, 16 APR 2026 to 14 MAY 2026

SW-3, 16 APR 2026 to 14 MAY 2026