

# HARYS FIVE DEPARTURE (RNAV)

AL-552 (FAA)

VAN NUYS (VNY)  
VAN NUYS, CALIFORNIA

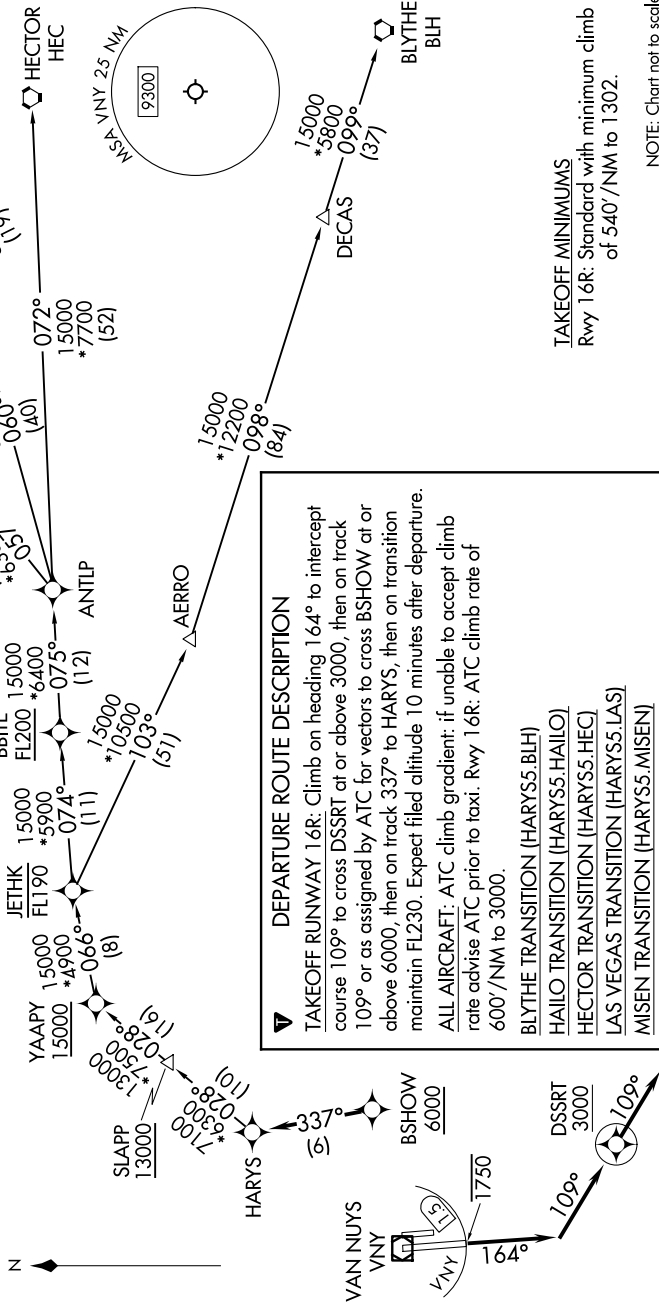
SW-3, 16 APR 2026 to 14 MAY 2026

SOCAL DEP CON  
124.6 298.85  
ATIS  
127.55  
CLNC DEL  
126.6 239.0  
GND CON  
121.7  
VAN NUYS TOWER\*  
119.3 239.0

RNAV 1 - DME/DME/IRU or GPS.  
RADAR required.

**TOP ALTITUDE:**  
FL230

NOTE: Turbojet and high performance turboprop aircraft only.  
NOTE: MISEN transition restricted to aircraft landing LAS terminal area.  
NOTE: Do not file HAILO transition - to be assigned by ATC.  
NOTE: Cross DER/VNY VOR/DME 1.5 DME south of or below 1750.



### DEPARTURE ROUTE DESCRIPTION

▼ TAKEOFF RUNWAY 16R: Climb on heading 164° to intercept course 109° to cross DSSRT at or above 3000, then on track 109° or as assigned by ATC for vectors to cross BSHOW at or above 6000, then on track 337° to HARYS, then on transition maintain FL230. Expect filed altitude 10 minutes after departure.

ALL AIRCRAFT: ATC climb gradient: if unable to accept climb rate advise ATC prior to taxi. Rwy 16R: ATC climb rate of 600'/NM to 3000.

- BLYTHE TRANSITION (HARYS5.BLIH)
- HAILO TRANSITION (HARYS5.HAILO)
- HECTOR TRANSITION (HARYS5.HEC)
- LAS VEGAS TRANSITION (HARYS5.LAS)
- MISEN TRANSITION (HARYS5.MISEN)

TAKEOFF MINIMUMS  
Rwy 16R: Standard with minimum climb of 540'/NM to 1302.

NOTE: Chart not to scale.

# HARYS FIVE DEPARTURE (RNAV)

(HARYS5.HARYS) 20FEB25

VAN NUYS, CALIFORNIA  
VAN NUYS (VNY)

SW-3, 16 APR 2026 to 14 MAY 2026