

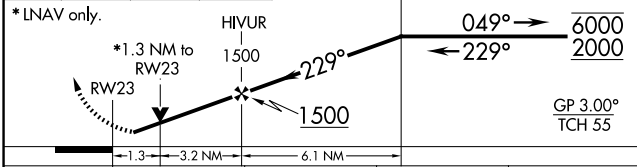
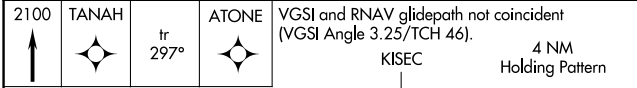
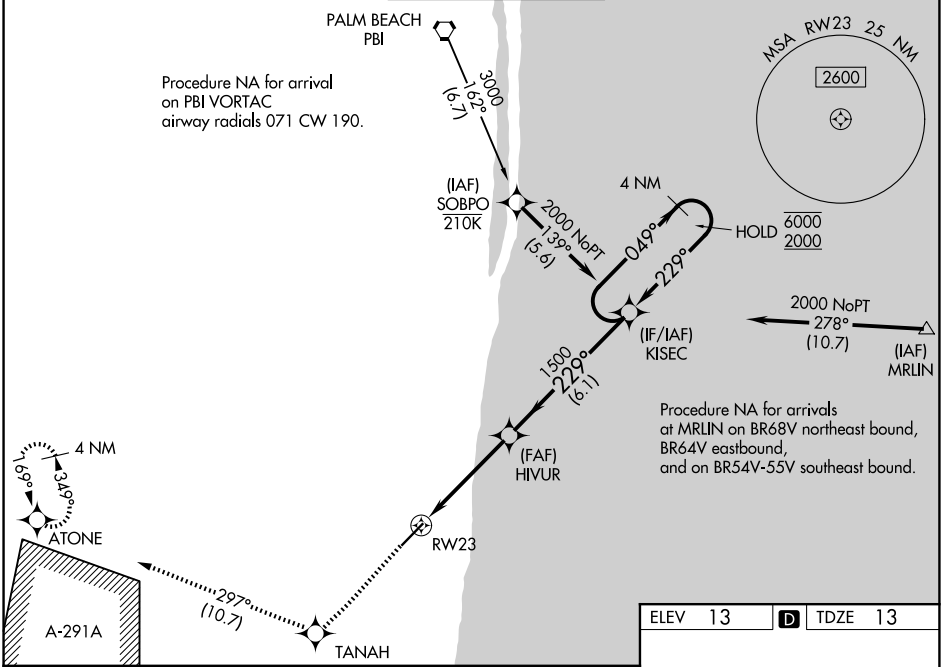
WAAS CH <b>42801</b> <b>W23A</b>	APP CRS <b>229°</b>	Rwy Ldg TDZE <b>13</b> Apt Elev <b>13</b>	<b>5898</b>
--	------------------------	---	-------------

# RNAV (GPS) Y RWY 23

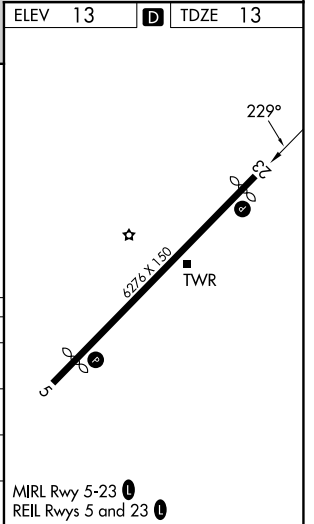
BOCA RATON (BCT)

RNP APCH.	<p><b>⚠</b> Rwy 23 helicopter visibility reduction below 3/4 SM NA. For uncompensated Baro-VNAV systems, procedure NA below -15°C or above 54°C. In minimum visibility conditions, bright lights on highway 1/4 mile north of airport may be mistaken as runway lights.</p>	MISSED APPROACH: Climb to 2100 direct TANAH and on track 297° to ATONE and hold.

D-ATIS <b>121.125</b>	PALM BEACH APP CON <b>127.35 343.6</b>	BOCA RATON TOWER ★ <b>118.425 (CTAF) 0</b>	GND CON <b>121.8</b>	GCO <b>127.35</b>
--------------------------	---	---	-------------------------	----------------------



CATEGORY	A	B	C	D
LPV DA	263-7/8 250 (300-7/8)			
LNAV/VNAV DA	357-1 1/8 344 (400-1 1/8)			
LNAV MDA	480-1	467 (500-1)	480-1 3/8	467 (500-1 3/8)
CIRCLING	680-1	667 (700-1)	680-1 3/4	880-2 3/4 867 (900-2 3/4)



SE-3, 16 APR 2026 to 14 MAY 2026

SE-3, 16 APR 2026 to 14 MAY 2026