

(TURPS2.TURPS) 26078

AL-560 (FAA)

BOCA RATON (BCT)
BOCA RATON, FLORIDA

TURPS TWO DEPARTURE (RNAV)

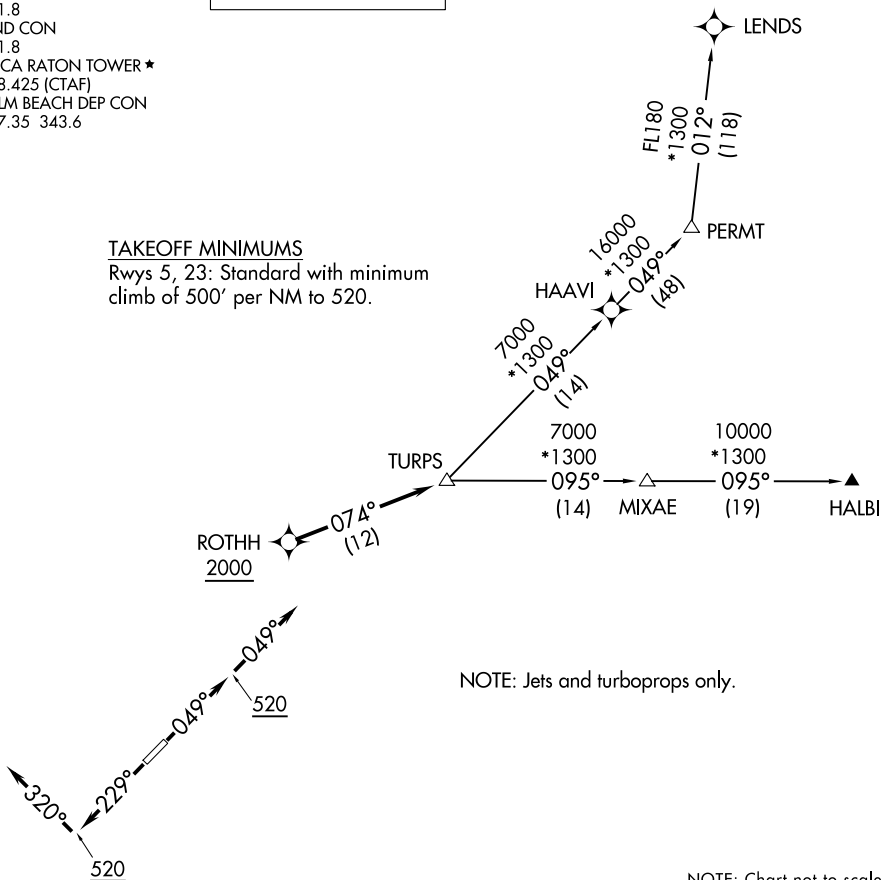
D-ATIS
121.125
CLINC DEL
121.8
GND CON
121.8
BOCA RATON TOWER ★
118.425 (CTAF)
PALM BEACH DEP CON
127.35 343.6

**TOP ALTITUDE:
2000**

RNAV-1 DME/DME/IRU or GPS.
RADAR required.

TAKEOFF MINIMUMS

Rwys 5, 23: Standard with minimum
climb of 500' per NM to 520.



SE-3, 16 APR 2026 to 14 MAY 2026

SE-3, 16 APR 2026 to 14 MAY 2026



DEPARTURE ROUTE DESCRIPTION

TAKEOFF RUNWAY 5: Climb on heading 049° to 520, then on heading 049°, or as assigned by ATC, for vectors to cross ROTHH at or above 2000, thence. . . .

TAKEOFF RUNWAY 23: Climb on heading 229° to 520, then on heading 320°, or as assigned by ATC, for vectors to cross ROTHH at or above 2000, thence. . . .

. . . .on track 074° to TURPS, maintain 2000, then on assigned transition, expect clearance to filed altitude within 10 minutes after departure.

HALBI TRANSITION (TURPS2.HALBI)

LEND S TRANSITION (TURPS2.LEND S)

PERMT TRANSITION (TURPS2.PERMT)

TURPS TWO DEPARTURE (RNAV)
(TURPS2.TURPS) 19MAY22

BOCA RATON, FLORIDA
BOCA RATON (BCT)