

CAMP SPRINGS ONE DEPARTURE (CAMP1.ADW) [USAF] CAMP SPRINGS, MARYLAND

ATIS 133.675 251.05
 CPDLC 554
 GND CON
 121.8 275.8
 ANDREWS TOWER
 118.4 349.0
 POTOMAC TRACON DEP CON
 (E) 125.65 348.725
 (W) 118.95 257.2

RADAR required

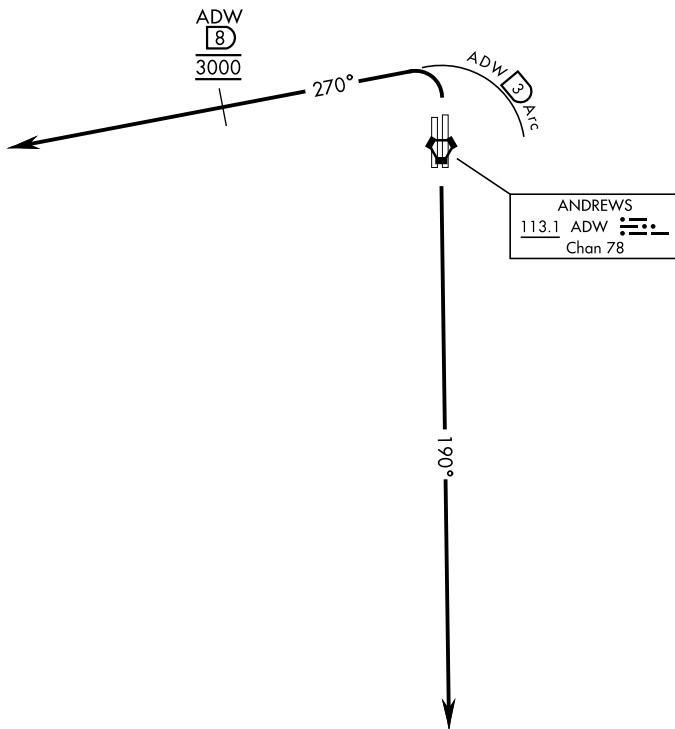
Rwy	Knots	60	120	180	240	300	360
1L/R	V/V(fpm)	380	760	1140	1520	1900	2280

ATC Climb Rate to 3000

If unable to make published climb gradient advise ATC prior to departure.

1149
A

RADAR VECTORS REQUIRED WITHIN 10 NM FROM DEPARTURE



NE-3, 16 APR 2026 to 14 MAY 2026

NE-3, 16 APR 2026 to 14 MAY 2026

DEPARTURE ROUTE DESCRIPTION

TAKEOFF RWY 1L/1R: Turn left climb on heading 270° within 3 DME of ADW VORTAC, cross ADW 8 DME at 3000. Expect radar vectors.

TAKEOFF RWY 19R/19L: Climb on heading 190° to 3000. Expect radar vectors to the west.

CAMP SPRINGS ONE DEPARTURE (CAMP1.ADW)