

CAMP SPRINGS, MARYLAND

ILS or LOC RWY 1R

LOC I-VJM 110.5	APCH CRS 010°	Rwy Idg 9756	TDZE 265
		Arprt Elev 280	

(USAF) JOINT BASE ANDREWS (ANDREWS AFB) (KADW)

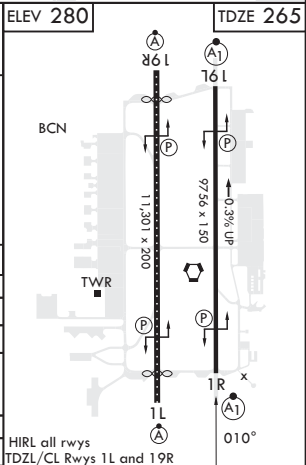
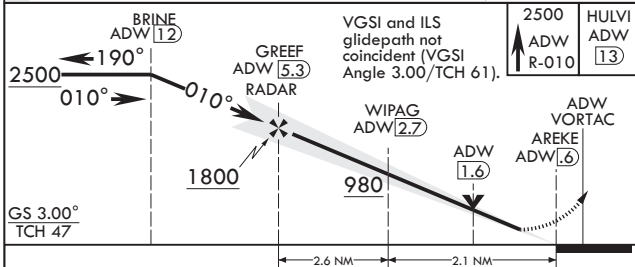
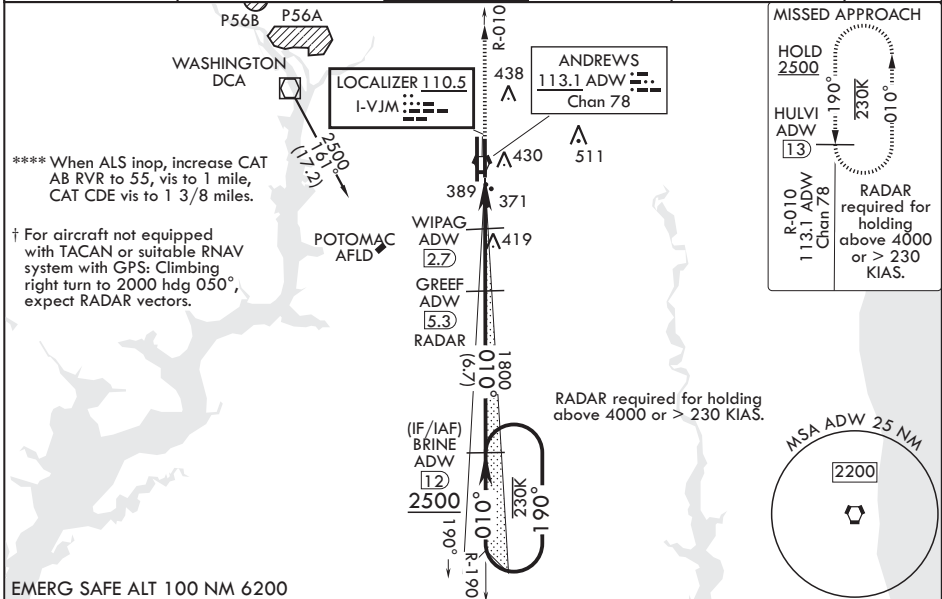
RADAR required
RADAR or DME required at FAF

⚠ * When ALS inop, increase RVR to 40, vis to 3/4 mile. RVR 18 authorized with use of Flight Director System or Autopilot System or Heads-Up-Display to DA.
** When ALS inop, increase RVR to 55, vis to 1 mile.
*** Circling not authorized W of Rwy 1L-19R.

ALS-F-1

† MISSED APPROACH:
Climb to 2500 via ADW VORTAC R-010 to HULVI/ADW 13 DME and hold.

ATIS 133.675 251.05	POTOMAC APP CON 128.0 335.5	TOWER 118.4 349.0	GND CON 121.8 275.8	CLNC DEL 127.55 285.475	CPDLC
-------------------------------	---------------------------------------	-----------------------------	-------------------------------	-----------------------------------	-------



CATEGORY	A	B	C	D	E
S-ILS 1R*	465/24		200	(200-½)	
S-LOC 1R**	640/24	375 (400-½)	640/35	375	(400-¾)
CIRCLING***	780-1	500 (500-1)	780-1½	500	840-2 560 (600-2)
			500 (500-1½)		
NON-DME					
S-LOC 1R****	720/24	455 (500-½)	720/45	455	(500-¾)
CIRCLING***	780-1	500 (500-1)	780-1½	500	840-2 560 (600-2)
			500 (500-1½)		

FAF to MAP 4.7 NM					
Knots	60	90	120	150	180
Min:Sec	4:42	3:08	2:21	1:53	1:34

CAMP SPRINGS, MARYLAND

38°49'N - 76°52'W JOINT BASE ANDREWS (ANDREWS AFB) (KADW)

Amdt 1 18MAY23

ILS or LOC RWY 1R

NE-3, 16 APR 2026 to 14 MAY 2026

NE-3, 16 APR 2026 to 14 MAY 2026