

JEFSN TWO DEPARTURE (RNAV) (JEFSN2.JEFSN)

JOINT BASE ANDREWS (ANDREWS AFB) (KADW)

CAMP SPRINGS, MARYLAND

ATIS 133.675 251.05
 CPDLC
 GND CON
 121.8 275.8
 ANDREWS TOWER
 118.4 349.0
 POTOMAC DEP CON
 (E) 125.65 348.725
 (W) 118.95 257.2

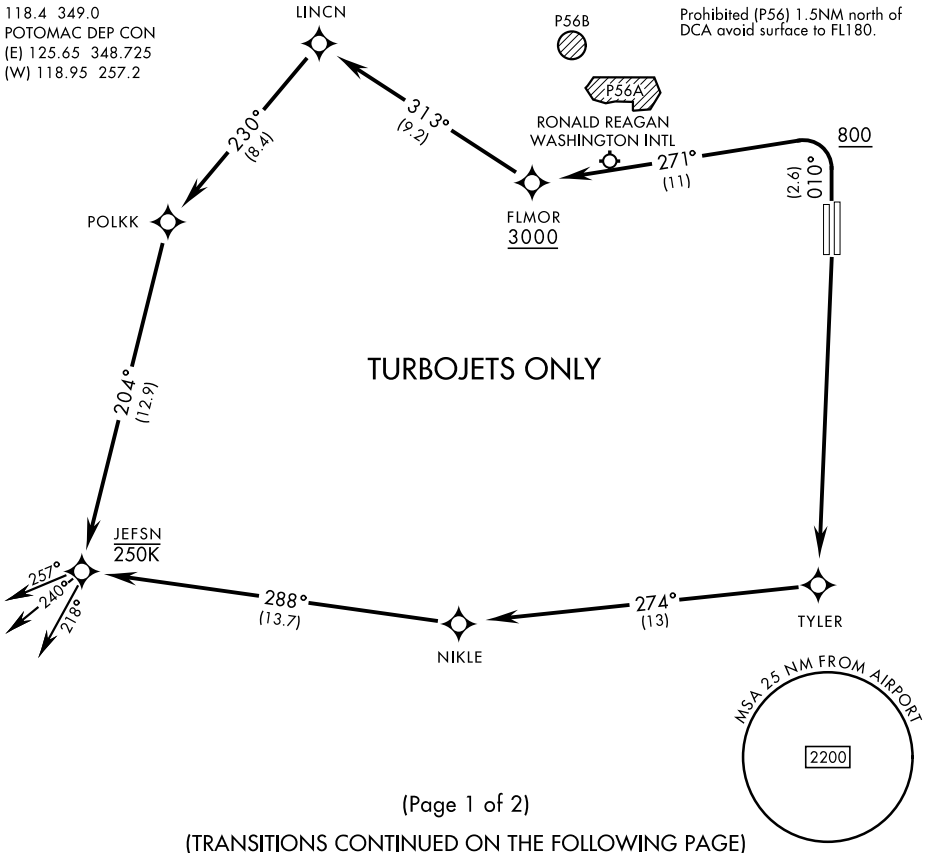
RNAV1-GPS
 RADAR required

[USAF]

**TOP ALTITUDE:
3000**

Max 250 KIAS until JEFNSN

Prohibited (P56) 1.5NM north of DCA avoid surface to FL180.



NE-3, 16 APR 2026 to 14 MAY 2026

NE-3, 16 APR 2026 to 14 MAY 2026

DEPARTURE ROUTE DESCRIPTION

TAKEOFF RWY 1L/R: Climb on heading 010° to 800, then climbing left turn to 3000 direct FLMOR. Then via depicted route to JEFNSN, thence...

TAKEOFF RWY 19L/R: Climb direct TYLER then via depicted route to JEFNSN, thence...

... on assigned transition. Maintain 3000, expect further clearance to filed alt within ten (10) minutes after departure.

FLASK TRANSITION (JEFSN2.FLASK)
GLANC TRANSITION (JEFSN2.GLANC)
MAULS TRANSITION (JEFSN2.MAULS)
MELTN TRANSITION (JEFSN2.MELTN)
RRSIN TRANSITION (JEFSN2.RRSIN)

JEFSN TWO DEPARTURE (RNAV) (JEFSN2.JEFSN)

CAMP SPRINGS, MARYLAND

JOINT BASE ANDREWS (ANDREWS AFB) (KADW)