

CAMP SPRINGS, MARYLAND

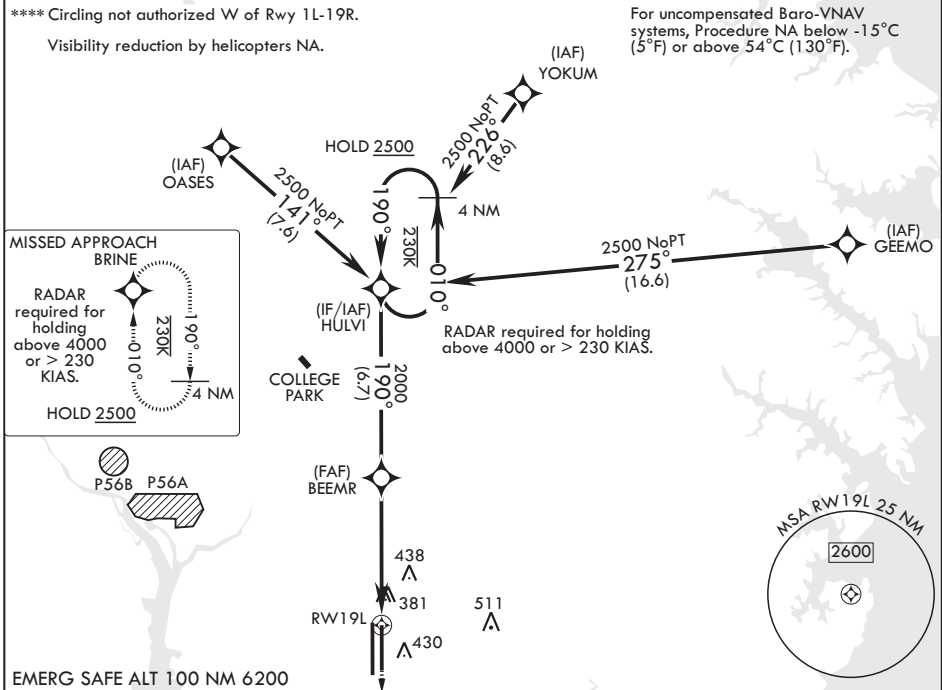
RNAV (GPS) RWY 19L

WAAS CH 52203 W19A	APCH CRS 190°	Rwy ldg TDZE Arprt Elev	9756 279 280
--------------------------	------------------	-------------------------------	--------------------

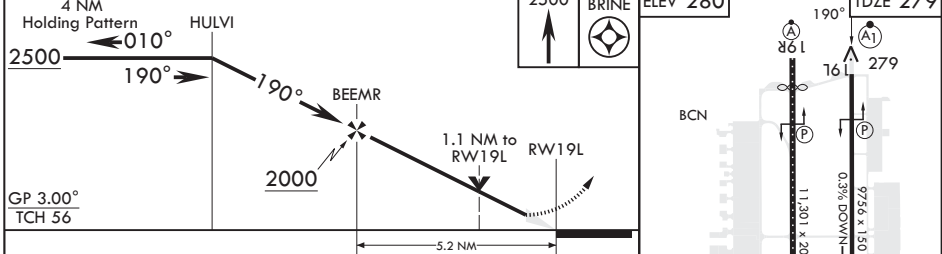
(USAF) JOINT BASE ANDREWS (ANDREWS AFB) (KADW)

DME/DME RNP-0.3 NA	ALSF-1	MISSED APPROACH: Climb to 2500 direct BRINE and hold.
<p>▼ * When ALS inop, increase RVR to 40, vis to 3/4 mile.</p> <p>** When ALS inop, increase RVR to 60, vis to 1 1/8 miles.</p> <p>*** When ALS inop, increase CAT AB RVR to 55, vis to 1 mile; CAT CDE RVR to 60, vis to 1 1/8 miles.</p>	(A1)	

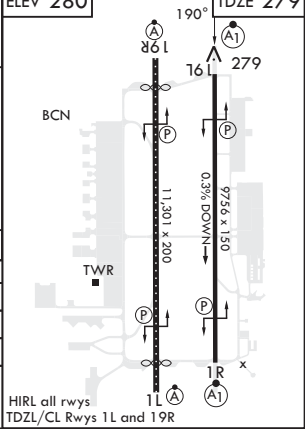
ATIS 133.675 251.05	POTOMAC APP CON 128.0 335.5	TOWER 118.4 349.0	GND CON 121.8 275.8	CLNC DEL 127.55 285.475	CPDLC
------------------------	--------------------------------	----------------------	------------------------	----------------------------	-------



EMERG SAFE ALT 100 NM 6200



CATEGORY	A	B	C	D	E
LPV DA*	479/24		200	(200-½)	
LNAV/VNAV DA**	680/40		401	(400-¾)	
LNAV MDA***	680/24	401 (400-½)	680/40	401	(400-¾)
CIRCLING****	780-1	500 (500-1)	780-1½ 500 (500-1½)	840-2	560 (600-2)



CAMP SPRINGS, MARYLAND

38°49'N - 76°52'W JOINT BASE ANDREWS (ANDREWS AFB) (KADW)

Amdt 1 18MAY23

RNAV (GPS) RWY 19L

NE-3, 16 APR 2026 to 14 MAY 2026

NE-3, 16 APR 2026 to 14 MAY 2026