

CAMP SPRINGS, MARYLAND

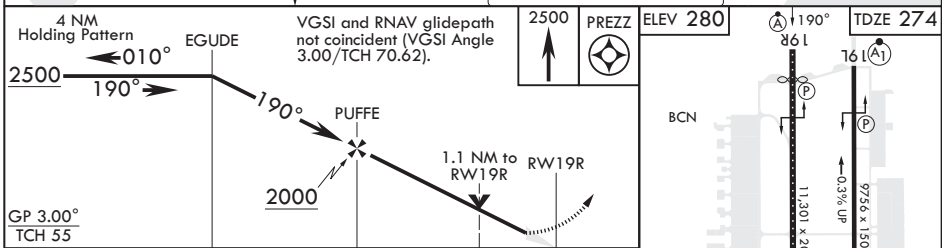
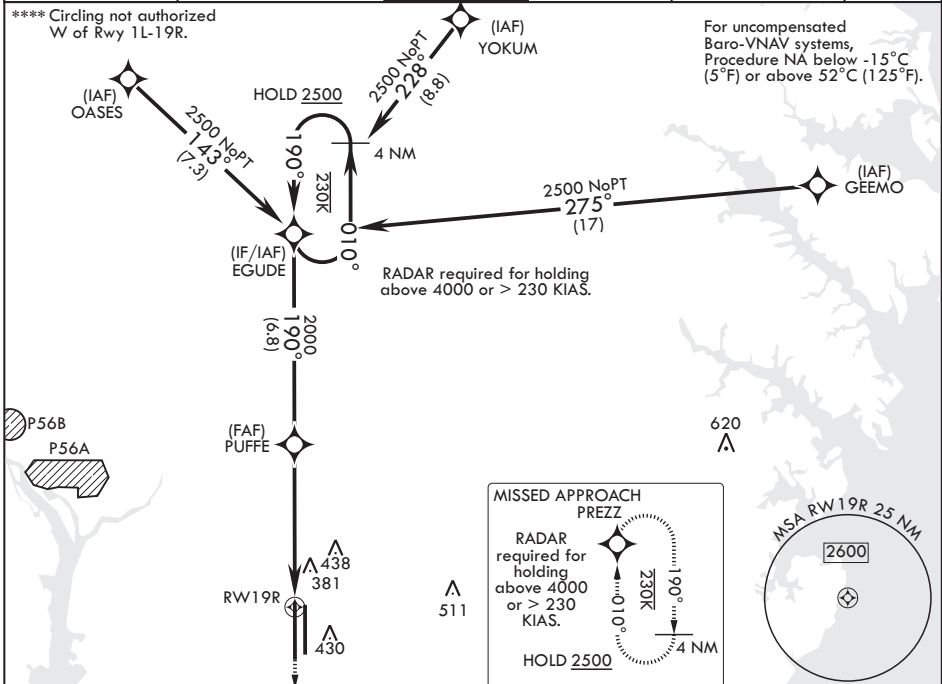
# RNAV (GPS) RWY 19R

WAAS CH 52204 W19B	APCH CRS 190°	Rwy ldg 10,309	TDZE 274
		Arprt Elev 280	

(USAF) JOINT BASE ANDREWS (ANDREWS AFB) (KADW)

DME/DME RNP-0.3 NA	ALSIF-2	MISSED APPROACH: Climb to 2500 direct PREZZ and hold.
<p>▼ * When ALS inop, increase RVR to 40, vis to 3/4. When TDZ/CL lights inop, increase RVR to 24. ** When ALS inop, increase vis to 1 1/4 miles. *** When ALS inop, increase CAT AB RVR to 55, vis to 1 mile; CAT CDE vis to 1 1/4 miles.</p>		

ATIS 133.675 251.05	POTOMAC APP CON 128.0 335.5	TOWER 118.4 349.0	GND CON 121.8 275.8	CLNC DEL 127.55 285.475	CPDLC
------------------------	--------------------------------	----------------------	------------------------	----------------------------	-------



CATEGORY	A	B	C	D	E
LPV DA*	474/18		200	(200-1/2)	
LNAV/VNAV DA**	697/40		423	(500-3/4)	
LNAV MDA***	700/24	426 (500-1/2)	700/40	426	(500-3/4)
CIRCLING****	780-1	500 (500-1)	780-1 1/2 500 (500-1 1/2)	840-2	560 (600-2)

CAMP SPRINGS, MARYLAND 38°49'N - 76°52'W JOINT BASE ANDREWS (ANDREWS AFB) (KADW)

# RNAV (GPS) RWY 19R

Amdt 1 18MAY23

HIRL all rws  
TDZL/CL Rws 1L and 19R

NE-3, 16 APR 2026 to 14 MAY 2026

NE-3, 16 APR 2026 to 14 MAY 2026