

CAMP SPRINGS, MARYLAND

# RNAV (GPS) RWY 1R

(USAF) JOINT BASE ANDREWS (ANDREWS AFB) (KADW)

WAAS CH 52206 W01B	APCH CRS 010°	Rwy ldg TDZE 265 Arprt Elev 280
--------------------------	------------------	---------------------------------------

DME/DME RNP-0.3 NA

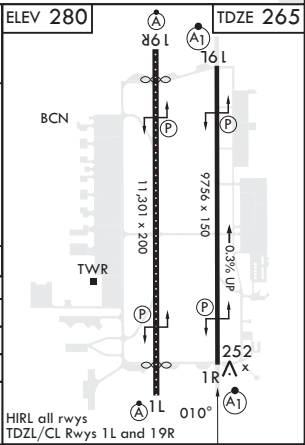
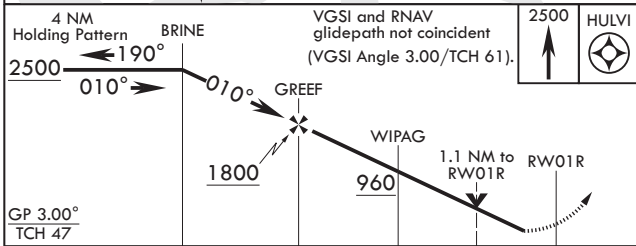
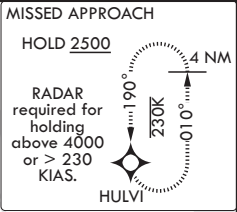
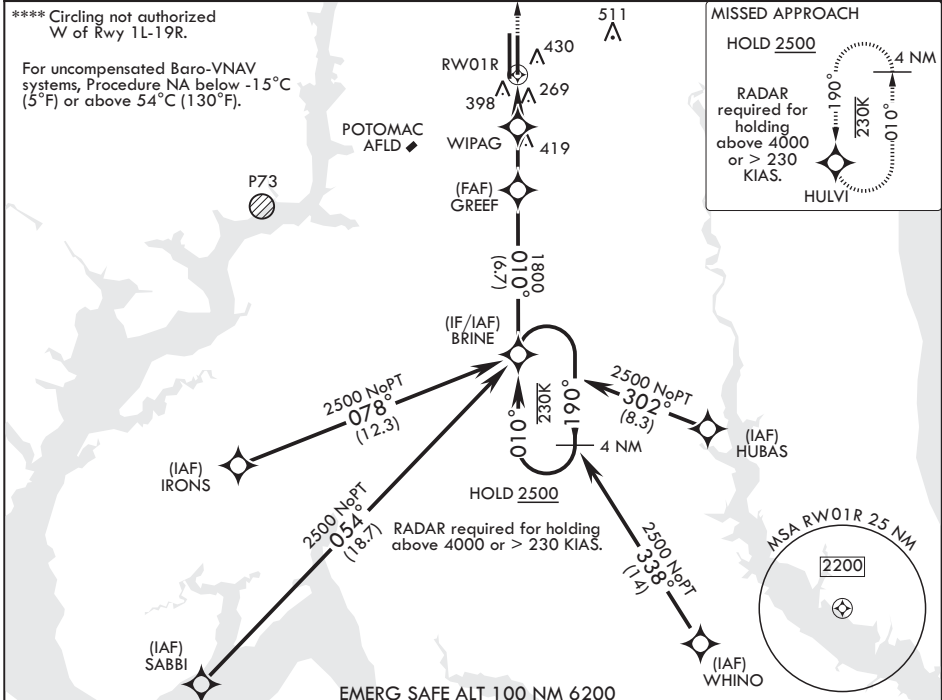
\* When ALS inop, increase RVR to 40, vis to 3/4 mile.  
 \*\* When ALS inop, increase RVR to 60, vis to 1 1/8 miles.  
 \*\*\* When ALS inop, increase CAT AB RVR to 55, vis to 1 mile;  
 CAT CDE RVR to 60, vis to 1 1/8 miles.

ALSF-1 MISSED APPROACH: Climb to 2500 direct HULVI and hold.

ATIS 133.675 251.05	POTOMAC APP CON 128.0 335.5	TOWER 118.4 349.0	GND CON 121.8 275.8	CLNC DEL 127.55 285.475	CPDLC
------------------------	--------------------------------	----------------------	------------------------	----------------------------	-------

\*\*\*\* Circling not authorized W of Rwy 1L-19R.

For uncompensated Baro-VNAV systems, Procedure NA below -15°C (5°F) or above 54°C (130°F).



CATEGORY	A	B	C	D	E
LPV DA*		465/24	200	(200-1/2)	
LNAV/VNAV DA**		660/35	395	(400-%)	
LNAV MDA***	660/24	395 (400-1/2)	660/35	395 (400-%)	
CIRCLING****	780-1	500 (500-1)	780-1 1/2 500 (500-1 1/2)	840-2	560 (600-2)

CAMP SPRINGS, MARYLAND

38°49'N - 76°52'W JOINT BASE ANDREWS (ANDREWS AFB) (KADW)

Amdt 3 18MAY23

# RNAV (GPS) RWY 1R

NE-3, 16 APR 2026 to 14 MAY 2026

NE-3, 16 APR 2026 to 14 MAY 2026