

CAMP SPRINGS, MARYLAND

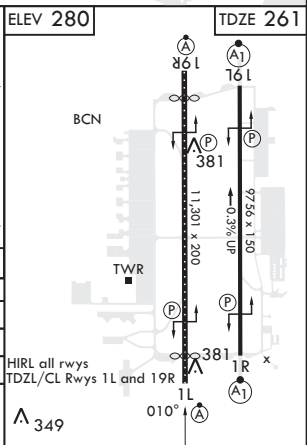
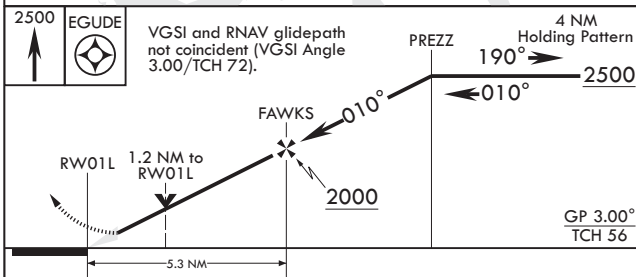
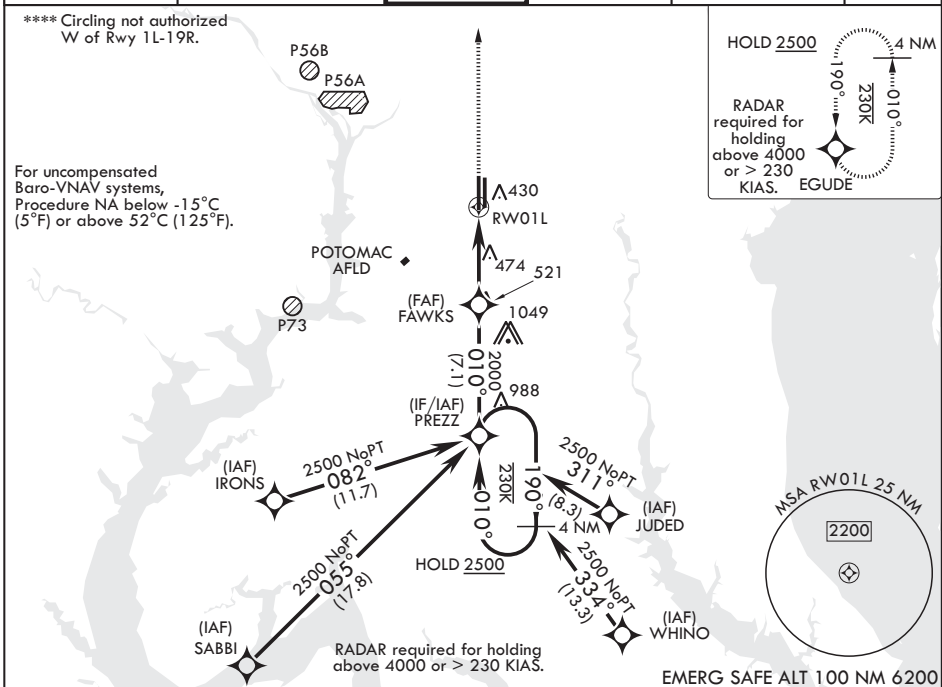
RNAV (GPS) Z RWY 1L

WAAS CH 52205 W01A	APCH CRS 010°	Rwy ldg TDZE 10,310 261 Arpt Elev 280
--------------------------	------------------	---

(USAF) JOINT BASE ANDREWS (ANDREWS AFB) (KADW)

DME/DME RNP-0.3 NA	ALSIF-2	MISSED APPROACH: Climb to 2500 direct EGUDE and hold.
<p>▼ * When ALS inop, increase RVR to 40, vis to ¾. When TDZ/CL lights inop, increase RVR to 24. ** When ALS inop increase vis to 1 1/4 miles. *** When ALS inop increase CAT AB RVR to 55, vis to 1 mile; CAT CDE vis to 1 1/4 miles.</p>		

ATIS 133.675 251.05	POTOMAC APP CON 128.0 335.5	TOWER 118.4 349.0	GND CON 121.8 275.8	CLNC DEL 127.55 285.475	CPDLC
------------------------	--------------------------------	----------------------	------------------------	----------------------------	-------



CATEGORY	A	B	C	D	E
LPV DA*	461/18		200	(200-½)	
LNAV/VNAV DA**	687/40		426	(500-¾)	
LNAV MDA***	700/24	439 (500-½)	700/40	439	(500-¾)
CIRCLING****	780-1	500 (500-1)	780-1½ 500 (500-1½)	840-2	560 (600-2)

CAMP SPRINGS, MARYLAND 38°49'N - 76°52'W JOINT BASE ANDREWS (ANDREWS AFB) (KADW)

Amdt 5 18MAY23

RNAV (GPS) Z RWY 1L

NE-3, 16 APR 2026 to 14 MAY 2026

NE-3, 16 APR 2026 to 14 MAY 2026