

CAMP SPRINGS, MARYLAND

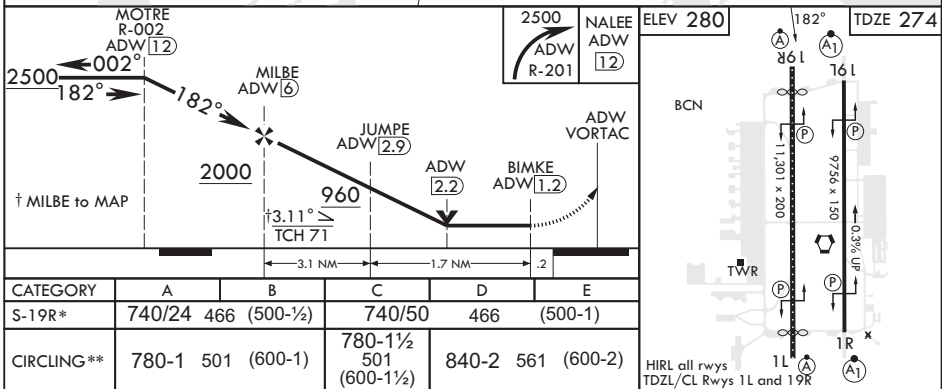
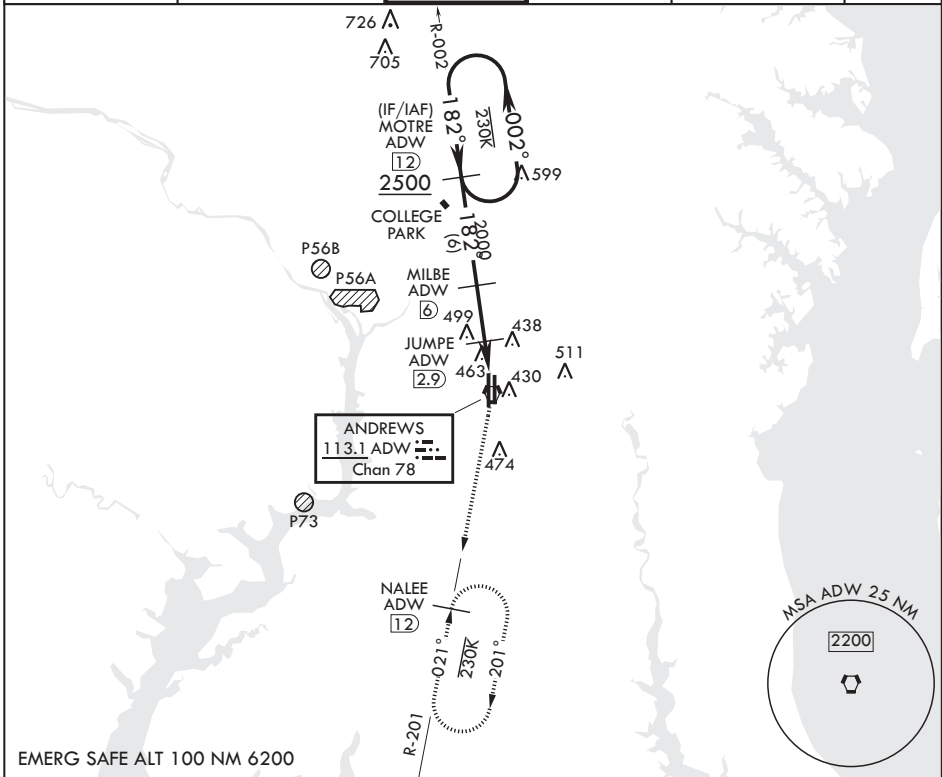
TACAN RWY 19R

VORTAC ADW 113.1 Chan 78	APCH CRS 182°	Rwy Idg TDZE Arpt Elev	10,309 274 280
--------------------------------	------------------	------------------------------	----------------------

(USAF) JOINT BASE ANDREWS (ANDREWS AFB) (KADW)

RADAR required	ALSF-2	MISSED APPROACH: Climbing to 2500, intercept ADW VORTAC R-201 to NALEE and hold.
<p>▼ * When ALS inop, increase CAT AB RVR to 55, vis to 1 mile, CAT CDE vis to 1 3/8 miles. ** Circling not authorized W of Rwy 1L-19R.</p>		

ATIS 133.675 251.05	POTOMAC APP CON 128.0 335.5	TOWER 118.4 349.0	GND CON 121.8 275.8	CLNC DEL 127.55 285.475	CPDLC
------------------------	--------------------------------	----------------------	------------------------	----------------------------	-------



CATEGORY	A	B	C	D	E
S-19R*	740/24 466 (500-1/2)		740/50	466	(500-1)
CIRCLING**	780-1 501 (600-1)		780-1 1/2 501 (600-1 1/2)	840-2 561 (600-2)	

HIRL all rwys
TDZL/CL Rwys 1L and 19R

NE-3, 16 APR 2026 to 14 MAY 2026

NE-3, 16 APR 2026 to 14 MAY 2026

CAMP SPRINGS, MARYLAND

38°49'N - 76°52'W JOINT BASE ANDREWS (ANDREWS AFB) (KADW)

Amdt 2 18MAY23

TACAN RWY 19R