

CAMP SPRINGS, MARYLAND

# TACAN RWY 1L

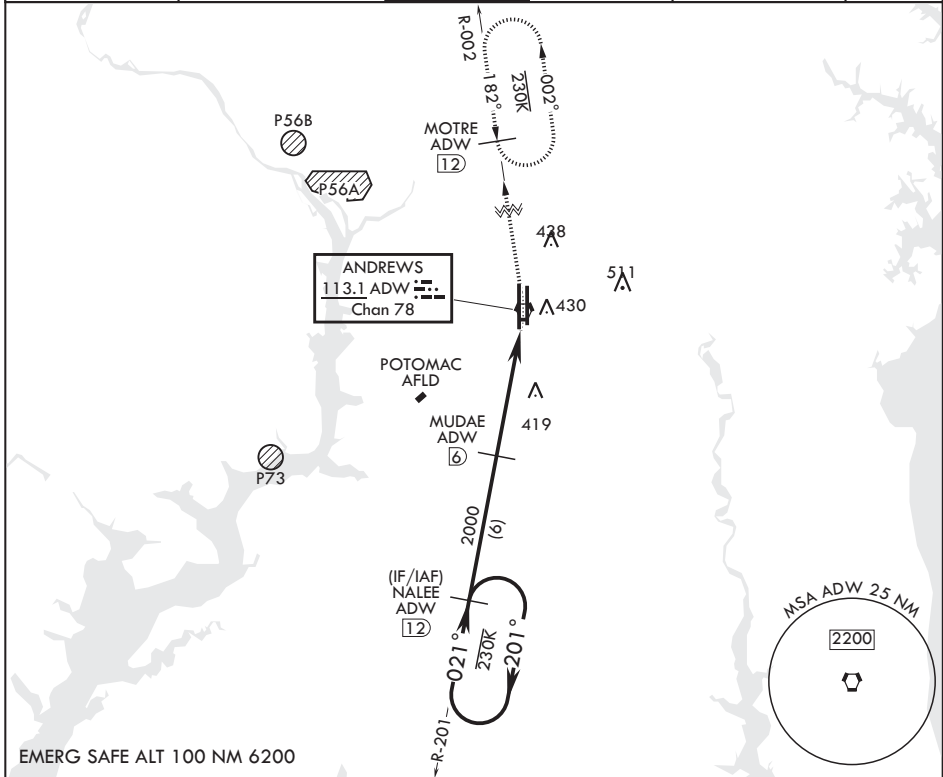
VORTAC ADW 113.1 Chan 78	APCH CRS 021°	Rwy ldg TDZE Arprt Elev	10,310 261 280
--------------------------------	------------------	----------------------------	----------------------

(USAF) JOINT BASE ANDREWS (ANDREWS AFB) (KADW)

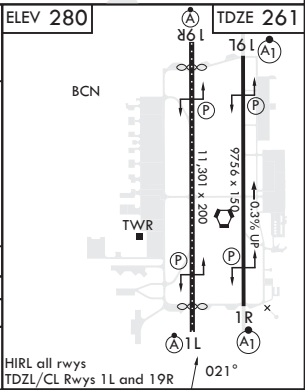
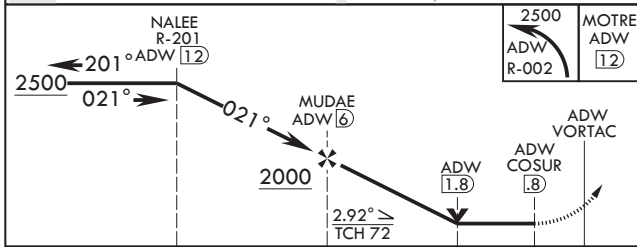
RADAR required  
 \* When ALS inop, increase CAT AB RVR to 55, vis to 1 mile, CAT CDE vis to 1 3/8 miles.  
 \*\* Circling not authorized W of Rwy 1L-19R.

ALSF-2 MISSED APPROACH: Climb to 2500 via ADW VORTAC R-002 to MOTRE/ADW 12 DME and hold.

ATIS 133.675 251.05	POTOMAC APP CON 128.0 335.5	TOWER 118.4 349.0	GND CON 121.8 275.8	CLNC DEL 127.55 285.475	CPDLC
------------------------	--------------------------------	----------------------	------------------------	----------------------------	-------



EMERG SAFE ALT 100 NM 6200



CATEGORY	A	B	C	D	E
S-1L*	720/24 459 (500-1/2)		720/45	459	(500-3/4)
CIRCLING**	780-1 501 (600-1)		780-1 1/2 501 (600-1 1/2)	840-2 561 (600-2)	

HIRL all rwyw TDZL/CL Rwyw 1L and 19R / 021°

NE-3, 16 APR 2026 to 14 MAY 2026

NE-3, 16 APR 2026 to 14 MAY 2026

CAMP SPRINGS, MARYLAND

38°49'N - 76°52'W JOINT BASE ANDREWS (ANDREWS AFB) (KADW)

Amdt 2 18MAY23

# TACAN RWY 1L