

CAMP SPRINGS, MARYLAND

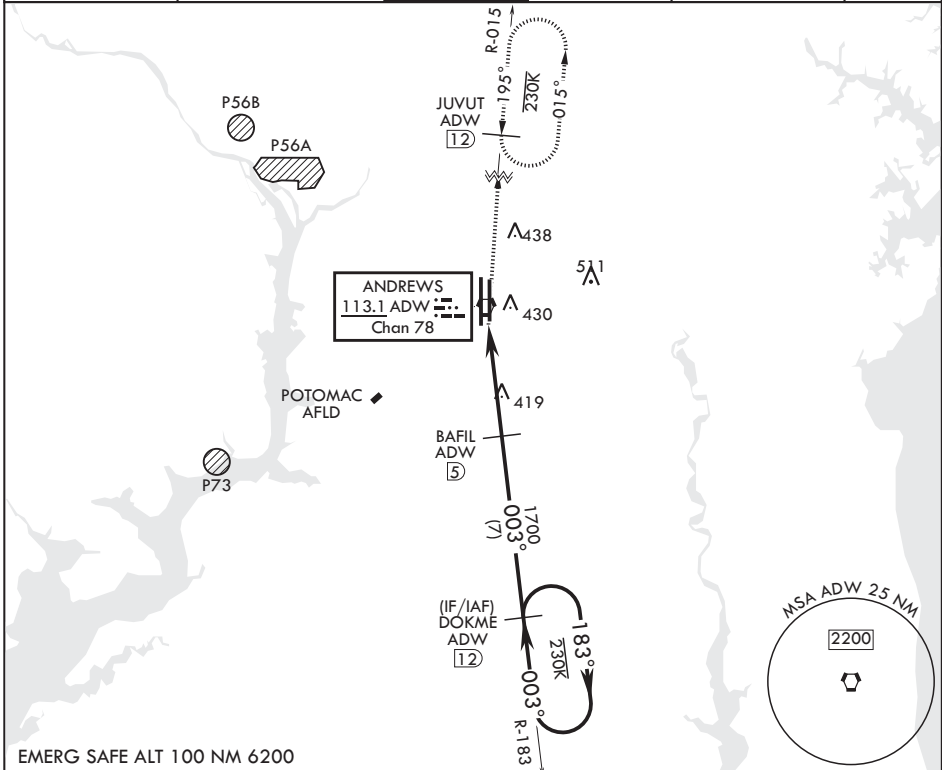
TACAN RWY 1R

VORTAC ADW 113.1 Chan 78	APCH CRS 003°	Rwy ldg TDZE Arprt Elev	9756 265 280
--------------------------------	------------------	-------------------------------	--------------------

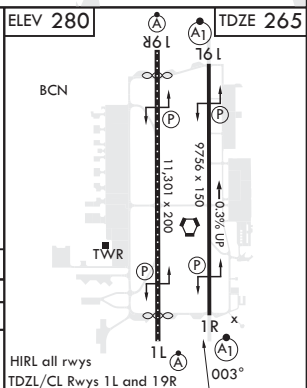
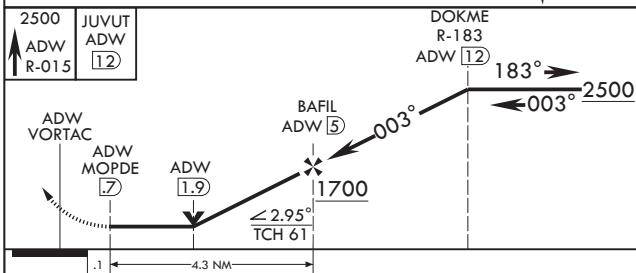
(USAF) JOINT BASE ANDREWS (ANDREWS AFB) (KADW)

RADAR required	ALSF-1 	MISSED APPROACH: Climb to 2500 via ADW VORTAC R-015 to JUVUT and hold.
<p>▼ * When ALS inop, increase CAT AB RVR to 55, vis to 1 mile, CAT CDE vis to 1 3/8 miles. ** Circling not authorized W of Rwy 1L-19R.</p>		

ATIS 133.675 251.05	POTOMAC APP CON 128.0 335.5	TOWER 118.4 349.0	GND CON 121.8 275.8	CLNC DEL 127.55 285.475	CPDLC
------------------------	--------------------------------	----------------------	------------------------	----------------------------	-------



EMERG SAFE ALT 100 NM 6200



CATEGORY	A	B	C	D	E
S-1R*	720/24	455 (500-1/2)	720/45	455 (500-3/4)	
CIRCLING**	780-1	501 (600-1)	780-1 1/2 501 (600-1 1/2)	840-2	561 (600-2)

CAMP SPRINGS, MARYLAND

38°49'N - 76°52'W JOINT BASE ANDREWS (ANDREWS AFB) (KADW)

Amdt 3 18MAY23

TACAN RWY 1R

NE-3, 16 APR 2026 to 14 MAY 2026

NE-3, 16 APR 2026 to 14 MAY 2026