

(VUDOO.VUDOO2) 25219

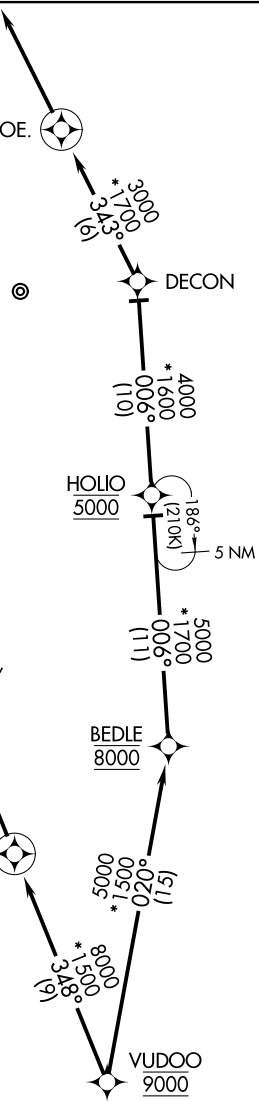
AL-561

JOINT BASE ANDREWS (KADW)
CAMP SPRINGS, MARYLAND

VUDOO TWO ARRIVAL (RNAV) Arrival Routes

POTOMAC APP CON
126.4 282.375
D-ATIS
133.675 251.05
TOWER
118.4 349.0

REVOE
Landing south: Rwy 19L/R:
Expect RADAR vectors to
final approach course after REVOE.



- NOTE: RADAR required.
- NOTE: RNAV 1.
- NOTE: DME/DME/IRU or GPS required.
- NOTE: P56 area A/B 1.5 NM north of DCA, avoid surface to 18000 MSL.

FUNNY
Landing north: Rwy 1L/R:
Expect RADAR vectors to
final approach course after FUNNY.
8000

R-6612

R-6611A & B

R-6613A

NOTE: Chart not to scale.

ARRIVAL ROUTE DESCRIPTION

LANDING NORTH RWYS 1L/R: From VUDOO on track 348° to cross FUNNY at 8000, then on track 348°. Expect RADAR vectors to final approach course.

LANDING SOUTH RWYS 19L/R: From VUDOO on track 020° to cross BEDLE at 8000, then on track 006° to cross HOLIO at 5000, then on track 006° to DECON, then on track 343° to REVOE, then on track 343°. Expect RADAR vectors to final approach course.

VUDOO TWO ARRIVAL (RNAV) Arrival Routes

CAMP SPRINGS, MARYLAND
JOINT BASE ANDREWS (KADW)

(VUDOO.VUDOO2) 10DEC15

NE-3, 16 APR 2026 to 14 MAY 2026

NE-3, 16 APR 2026 to 14 MAY 2026