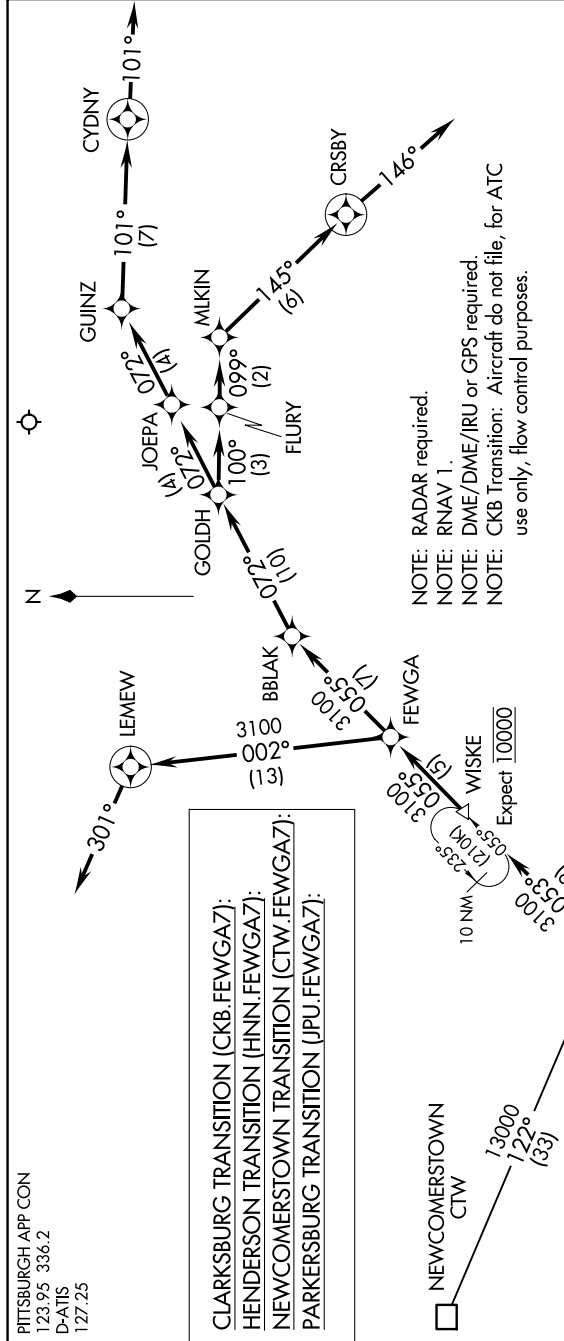


FEWGA SEVEN ARRIVAL (RNAV)

NE-4, 16 APR 2026 to 14 MAY 2026



NOTE: RADAR required.
 NOTE: RNAV 1.
 NOTE: DME/DME/IRU or GPS required.
 NOTE: CKB Transition: Aircraft do not file, for ATC use only, flow control purposes.

ARRIVAL ROUTE DESCRIPTION

From WISKE on track 055° to FEWGA, thence on assigned runway transition.
 LANDING RWY 10L/10C/10R: From FEWGA on track 002° to LEMEW, then on heading 301°. Expect radar vectors to final approach course.
 LANDING RWY 28L/28C/28R: From FEWGA on track 055° to BBLAK, then on track 072° to GOLDH, then on track 072° to JOEPA, then on track 072° to GUINZ, then on track 101° to CYDNY, then on heading 101°. Expect radar vectors to final approach course.
 LANDING RWY 32: From FEWGA on track 055° to BBLAK, then on track 072° to GOLDH, then on track 100° to FLURY, then on track 099° to MLKIN, then on track 145° to CRSBY, then fly heading 146°. Expect radar vectors to final approach course.

NOTE: Chart not to scale

FEWGA SEVEN ARRIVAL (RNAV)

NE-4, 16 APR 2026 to 14 MAY 2026