

# ILS RWY 28R (SA CAT I & II) PITTSBURGH INTL (PIT)

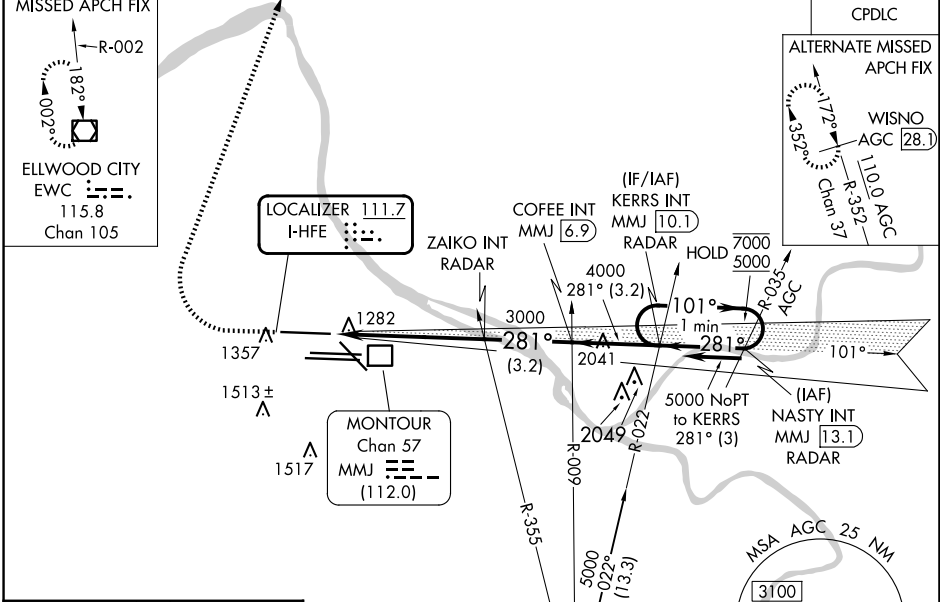
LOC I-HFE <b>111.7</b>	APP CRS <b>281°</b>	Rwy Ldg <b>10102</b> TDZE <b>1174</b> Apt Elev <b>1203</b>
---------------------------	------------------------	--

From NASTY: Radar required for procedure entry.

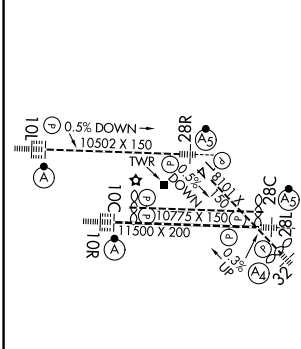


MISSED APPROACH: Climb to 1800 then climbing right turn to 5000 direct EWVC VOR/DME and hold.

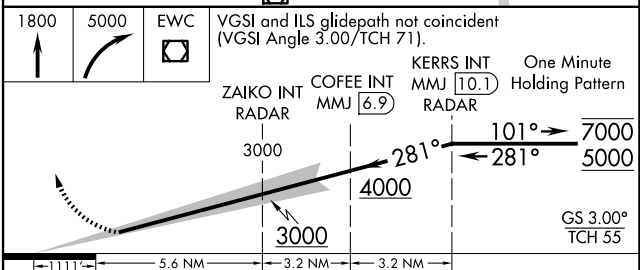
D-ATIS ARR <b>127.25</b> DEP <b>135.9</b>	PITTSBURGH APP CON <b>123.95 360.8</b>	PITTSBURGH TOWER <b>128.3 291.7</b>	GND CON SOUTH <b>121.9 348.6</b> NORTH <b>127.8 348.6</b>	CLNC DEL <b>126.75 353.7</b>
---	---	--	---	---------------------------------



ELEV <b>1203</b>	<b>D</b>	TDZE <b>1174</b>
------------------	----------	------------------



REIL Rwy 10C HIRL all Rwys TDZ/CL Rwys 10L, 10R, 28L, 28R, 28C, and 32
---



CATEGORY	A	B	C	D
S-ILS 28R	SA CAT I RA 192/14 150 DA 1324			
S-ILS 28R	SA CAT II RA 116/12 100 DA 1274			
<b>SA CATEGORY I &amp; II ILS - SPECIAL AIRCREW &amp; AIRCRAFT CERTIFICATION REQUIRED</b>				

NE-4, 16 APR 2026 to 14 MAY 2026

NE-4, 16 APR 2026 to 14 MAY 2026