

# RNAV (RNP) Z RWY 28R

PITTSBURGH INTL (PIT)

APP CRS <b>281°</b>	Rwy Ldg TDZE Apt Elev	<b>10102</b> <b>1174</b> <b>1203</b>
------------------------	-----------------------------	--

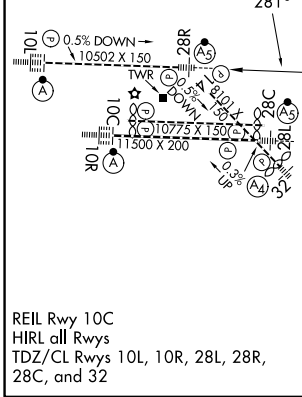
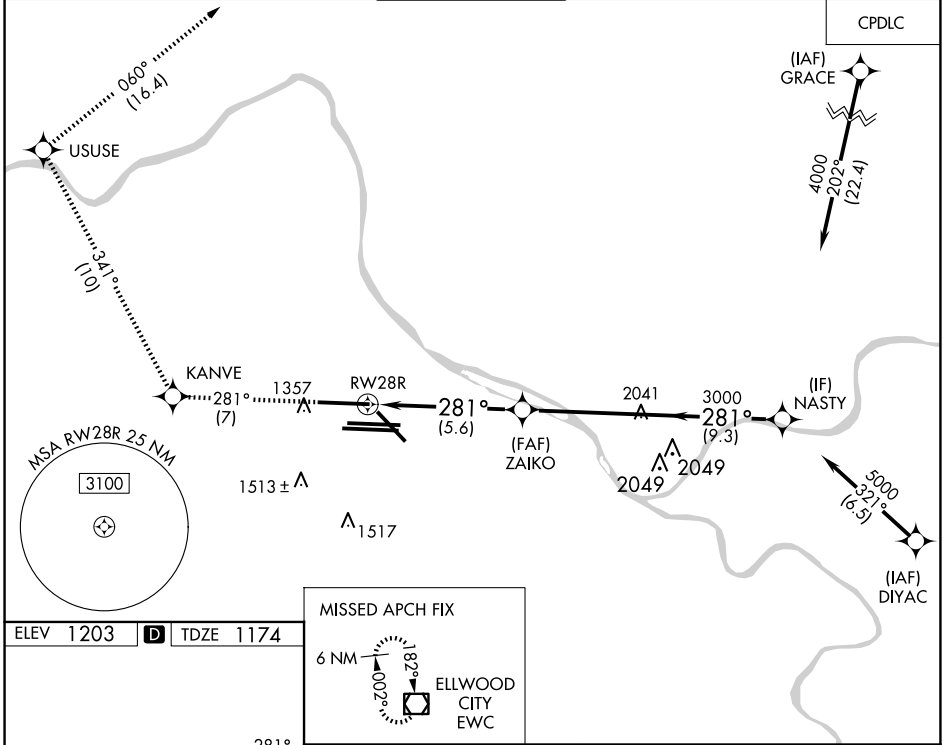
RNP AR APCH - GPS.

Simultaneous approach authorized. For uncompensated Baro-VNAV systems, procedure NA below -18°C or above 54°C. For inop ALS, increase RNP 0.30 all Cts visibility to 1 3/8 SM.

MALSRL

MISSED APPROACH: Climb to 4000 on track 281° to KANVE and track 341° to USUSE and track 060° to EWC VOR/DME and hold.

D-ATIS ARR <b>127.25</b> DEP <b>135.9</b>	PITTSBURGH APP CON <b>123.95 360.8</b>	PITTSBURGH TOWER <b>128.3 291.7</b>	GND CON SOUTH <b>121.9 348.6</b> NORTH <b>127.8 348.6</b>	CLNC DEL <b>126.75 353.7</b>
---	---	--	---	---------------------------------



ELEV 1203	<b>D</b>	TDZE 1174		
MISSED APCH FIX				
4000	KANVE	USUSE	EWC	
↑	tr 281°	tr 341°	tr 060°	
VGSi and RNAV glidepath not coincident (VGSi Angle 3.00/TCH 71).				
RW28R		ZAIKO	NASTY	
3000		3000	4000	
5.6 NM		9.3 NM		
GP 3.00°	TCH 55°			
CATEGORY	A	B	C	D
RNP 0.30 DA	1675/55 501 (500-1)			
<b>AUTHORIZATION REQUIRED</b>				

NE-4, 16 APR 2026 to 14 MAY 2026

NE-4, 16 APR 2026 to 14 MAY 2026