

WAAS CH <b>90126</b> <b>W10A</b>	APP CRS <b>101°</b>	Rwy Ldg TDZE Apt Elev	<b>9708</b> <b>1141</b> <b>1203</b>
--	------------------------	-----------------------------	---

# RNAV (GPS) Y RWY 10C

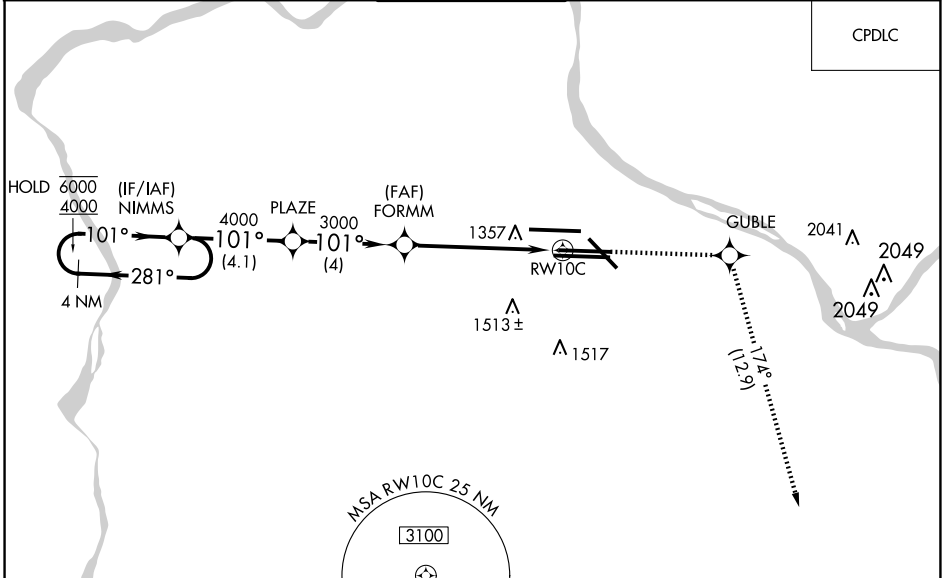
PITTSBURGH INTL (PIT')

RNP APCH - GPS.

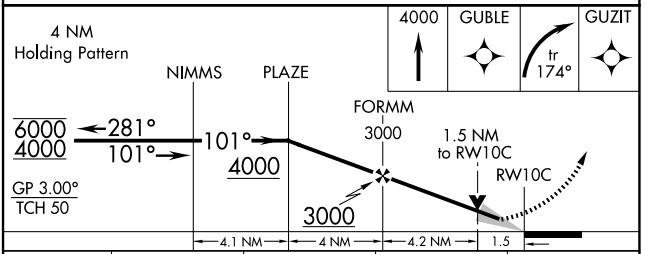
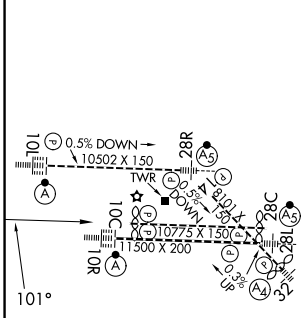
**⚠** Simultaneous approach authorized. LNAV procedure NA during simultaneous operations. For uncompensated Baro-VNAV systems, LNAV/VNAV NA below -17°C or above 54°C. Use of FD or AP required during simultaneous operations.

**⚠** MISSED APPROACH: Climb to 4000 direct GUBLE and right turn on track 174° to GUZIT and hold.

D-ATIS ARR <b>127.25</b> DEP <b>135.9</b>	PITTSBURGH APP CON <b>123.95 360.8</b>	<b>PITTSBURGH TOWER</b> <b>128.3 291.7</b>	GND CON SOUTH <b>121.9 348.6</b> NORTH <b>127.8 348.6</b>	CLNC DEL <b>126.75 353.7</b>
---	---	---	---	---------------------------------



ELEV 1203	<b>D</b>	TDZE 1141
-----------	----------	-----------



CATEGORY	A	B	C	D
LPV DA		1438/45	297 (300-¾)	
LNAV/VNAV DA		1634-1½	493 (500-1½)	
LNAV MDA	1680/55	539 (500-1)	1680-1½	539 (500-1½)
<b>C</b> CIRCLING	1700-1	497 (500-1)	1880-2 677 (700-2)	1880-2¼ 677 (700-2¼)

REIL Rwy 10C  
HIRL all Rwys  
TDZ/CL Rwys 10L, 10R, 28L, 28R,  
28C, and 32

NE-4, 16 APR 2026 to 14 MAY 2026

NE-4, 16 APR 2026 to 14 MAY 2026