

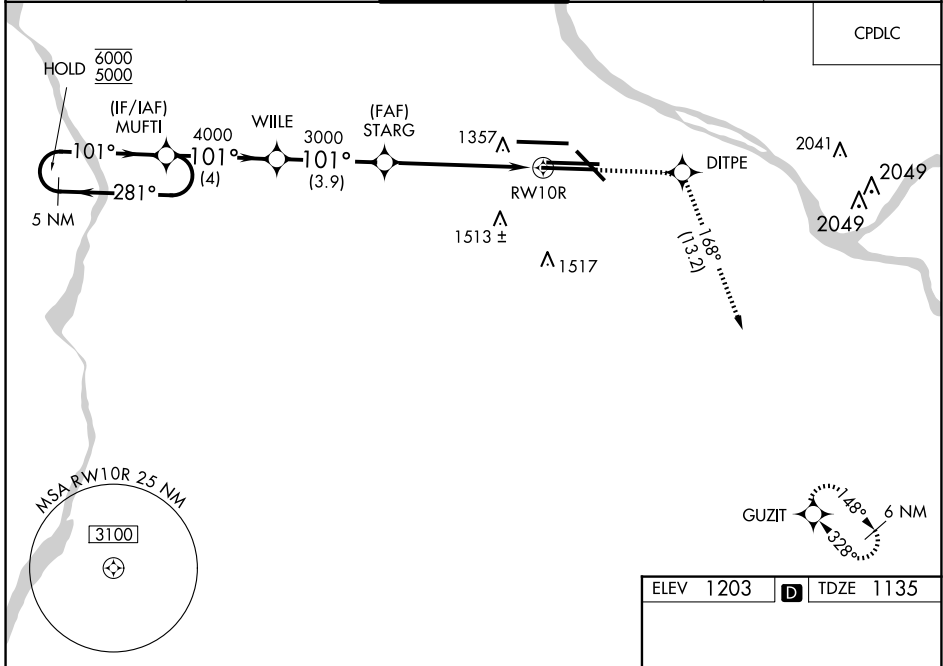
WAAS CH <b>86226</b> <b>W10D</b>	APP CRS <b>101°</b>	Rwy Ldg TDZE <b>1135</b> Apt Elev <b>1203</b>
--	------------------------	---

# RNAV (GPS) Y RWY 10R

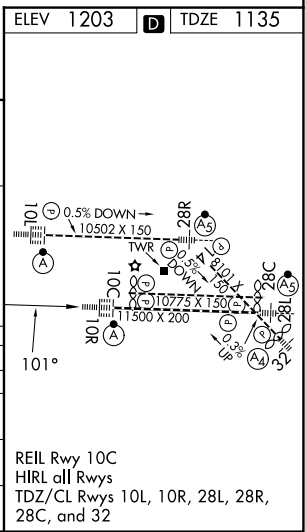
PITTSBURGH INTL (PIT)

RNP APCH - GPS.	ALSF-2	MISSED APPROACH: Climb to 4000 direct DITPE and right turn on track 168° to GUZIT and hold.
<p><b>⚠</b> For uncompensated Baro-VNAV systems, LNAV/VNAV NA below -17°C or above 54°C. Simultaneous approach authorized. LNAV procedure NA during simultaneous operations. Use of FD or AP required during simultaneous operations.</p>		

D-ATIS ARR <b>127.25</b> DEP <b>135.9</b>	PITTSBURGH APP CON <b>123.95 360.8</b>	PITTSBURGH TOWER <b>128.3 291.7</b>	GND CON SOUTH <b>121.9 348.6</b> NORTH <b>127.8 348.6</b>	CLNC DEL <b>126.75 353.7</b>
---	---	--	---	---------------------------------



5 NM Holding Pattern					VGSI and RNAV glidepath not coincident (VGSI Angle 3.00/TCH 71).					4000	DITPE	tr 168°	GUZIT
MUFTI		WIILE		STARG		RWY 10R		RWY 10R					
6000 ← 281°		101° →		3000		1.4 NM to RWY 10R		1.4 NM to RWY 10R					
5000		4000		3000		3000		3000					
GP 3.00° TCH 51													
← 4 NM		← 3.9 NM		← 4.3 NM		← 1.4 NM							
CATEGORY	A		B		C		D						
LPV DA			1335/18		200 (200-1/2)								
LNAV/VNAV DA			1658/55		523 (500-1)								
LNAV MDA	1660/24		525 (500-1/2)		1660/55		525 (500-1)						
<b>C</b> CIRCLING	1700-1		497 (500-1)		1880-2		1880-2 1/4						
					677 (700-2)		677 (700-2 1/4)						



NE-4, 16 APR 2026 to 14 MAY 2026

NE-4, 16 APR 2026 to 14 MAY 2026