

WAAS CH <b>45527</b> <b>W28A</b>	APP CRS <b>281°</b>	Rwy Ldg TDZE Apt Elev	<b>9708</b> <b>1134</b> <b>1203</b>
--	------------------------	-----------------------------	---

# RNAV (GPS) Y RWY 28C

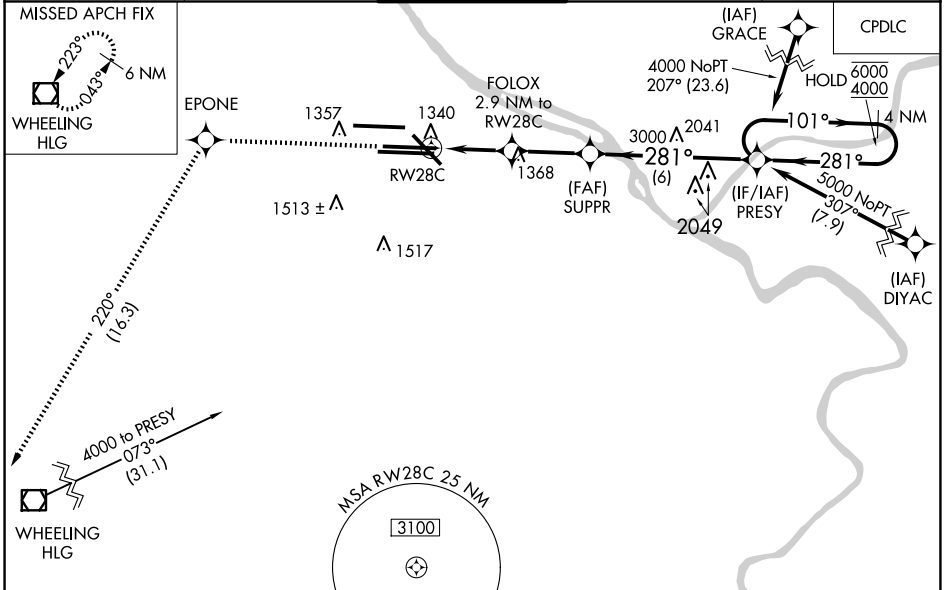
PITTSBURGH INTL (PIT)

RNP APCH - GPS.

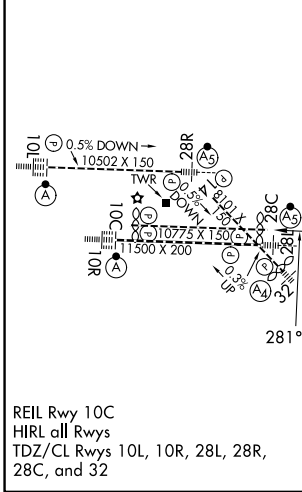
⚠ Circling Rwy 14 NA at night. Rwy 28C helicopter visibility reduction below RVR 4000 NA.  
 ⚠ For uncompensated Baro-VNAV systems, LNAV/VNAV NA below -18°C or above 54°C.  
 Simultaneous approach authorized. LNAV procedure NA during simultaneous operations.  
 Use of FD or AP required during simultaneous operations.

MISSED APPROACH: Climb to 4000 direct EPONE and on track 220° to HLG VOR/DME and hold.

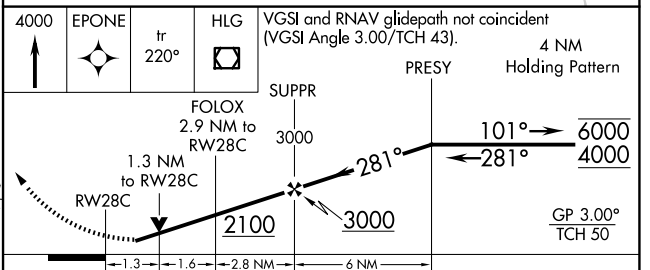
D-ATIS ARR <b>127.25</b> DEP <b>135.9</b>	PITTSBURGH APP CON <b>123.95 360.8</b>	PITTSBURGH TOWER <b>128.3 291.7</b>	GND CON SOUTH <b>121.9 348.6</b> NORTH <b>127.8 348.6</b>	CLNC DEL <b>126.75 353.7</b>
---	---	--	---	---------------------------------



ELEV <b>1203</b>	<b>D</b>	TDZE <b>1134</b>
------------------	----------	------------------



REIL Rwy 10C  
HIRL all Rwys  
TDZ/CL Rwys 10L, 10R, 28L, 28R,  
28C, and 32



CATEGORY	A	B	C	D
LPV DA		1384/40	250 (200-¾)	
LNAV/VNAV DA		1544/60	410 (400-1¼)	
LNAV MDA	1600/55	466 (400-1)	1600-1¾	466 (400-1¾)
<b>C</b> CIRCLING	1700-1	497 (500-1)	1880-2 677 (700-2)	1880-2¼ 677 (700-2¼)

NE-4, 16 APR 2026 to 14 MAY 2026

NE-4, 16 APR 2026 to 14 MAY 2026