

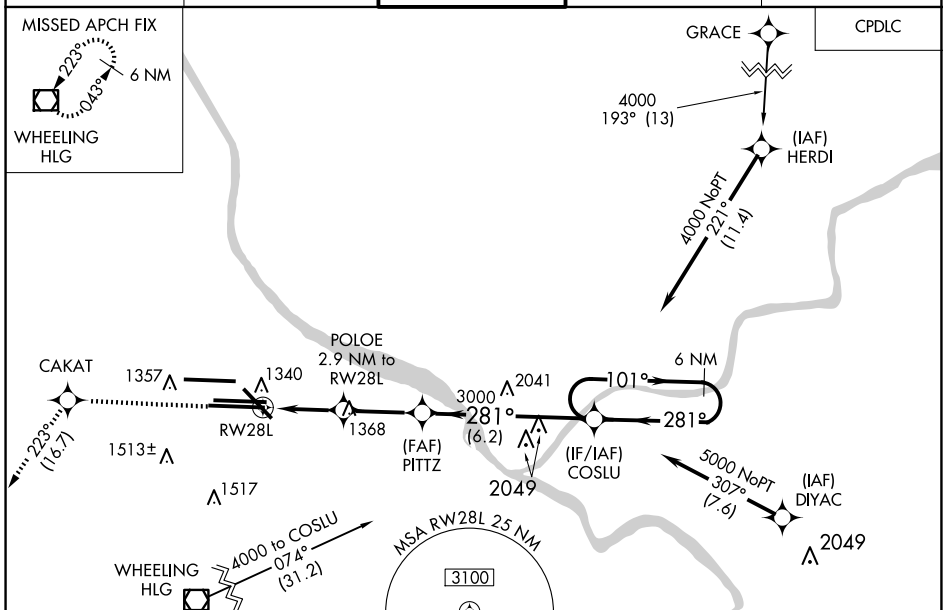
WAAS CH 97326 W28B	APP CRS 281°	Rwy Ldg TDZE Apt Elev	11500 1125 1203
--	------------------------	-----------------------------	--

RNAV (GPS) Y RWY 28L

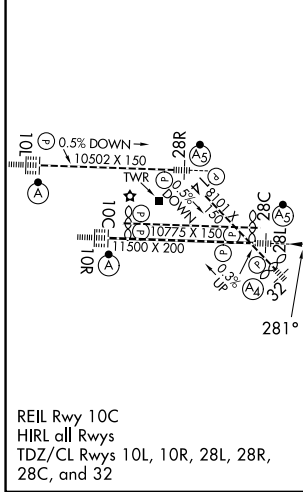
PITTSBURGH INTL (PIT)

RNP APCH - GPS	MALSR	MISSED APPROACH: Climb to 4000 direct CAKAT and on track 223° to HLG VOR/DME and hold.
<p>▼ For uncompensated Baro-VNAV systems, LNAV/VNAV NA below -18°C or above 54°C. For inop ALS, increase LNAV Cats C/D visibility to 1 3/8 SM.</p> <p>▲ LNAV procedure NA during simultaneous operations. Use of FD or AP required during simultaneous operations.</p>		

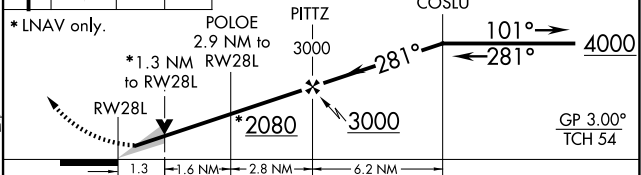
D-ATIS ARR 127.25 DEP 135.9	PITTSBURGH APP CON 123.95 360.8	PITTSBURGH TOWER 128.3 291.7	GND CON SOUTH 121.9 348.6 NORTH 127.8 348.6	CLNC DEL 126.75 353.7
---	---	--	---	---------------------------------



ELEV 1203	D	TDZE 1125
------------------	----------	------------------



4000	CAKAT	tr 223°	HLG	VGSI and RNAV glidepath not coincident (VGSI Angle 3.00/TCH 70).	6 NM Holding Pattern
------	-------	---------	-----	--	----------------------



CATEGORY	A	B	C	D
LPV DA		1325/18	200 (200-1/2)	
LNAV/VNAV DA		1549/40	424 (400-3/4)	
LNAV MDA	1600/24	475 (400-1/2)	1600/50	475 (400-1)
<input checked="" type="checkbox"/> CIRCLING	1700-1	497 (500-1)	1880-2 677 (700-2)	1880-2 1/4 677 (700-2 1/4)

NE-4, 16 APR 2026 to 14 MAY 2026

NE-4, 16 APR 2026 to 14 MAY 2026