

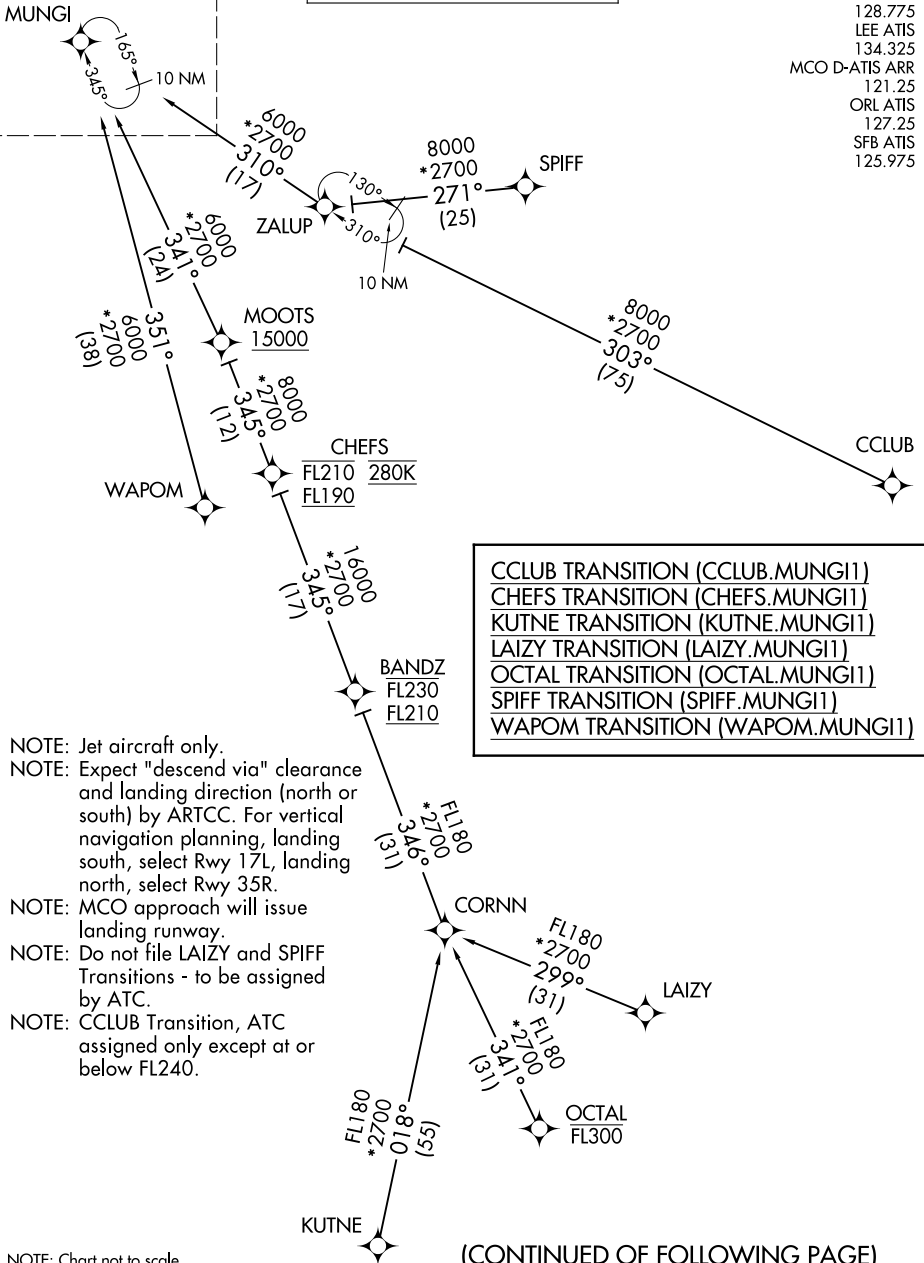
MUNGI ONE ARRIVAL (RNAV) Transition Routes

ORLANDO, FLORIDA

See following page for arrival route.

RNAV 1 - DME/DME/IRU or GPS.
RADAR required.

ORLANDO APP CON
128.375 338.2
ISM ATIS
128.775
LEE ATIS
134.325
MCO D-ATIS ARR
121.25
ORL ATIS
127.25
SFB ATIS
125.975



CCLUB TRANSITION (CCLUB.MUNGI1)
CHEFS TRANSITION (CHEFS.MUNGI1)
KUTNE TRANSITION (KUTNE.MUNGI1)
LAIZY TRANSITION (LAIZY.MUNGI1)
OCTAL TRANSITION (OCTAL.MUNGI1)
SPIFF TRANSITION (SPIFF.MUNGI1)
WAPOM TRANSITION (WAPOM.MUNGI1)

- NOTE: Jet aircraft only.
- NOTE: Expect "descend via" clearance and landing direction (north or south) by ARTCC. For vertical navigation planning, landing south, select Rwy 17L, landing north, select Rwy 35R.
- NOTE: MCO approach will issue landing runway.
- NOTE: Do not file LAIZY and SPIFF Transitions - to be assigned by ATC.
- NOTE: CCLUB Transition, ATC assigned only except at or below FL240.

NOTE: Chart not to scale.

(CONTINUED OF FOLLOWING PAGE)

SE-3, 16 APR 2026 to 14 MAY 2026

SE-3, 16 APR 2026 to 14 MAY 2026