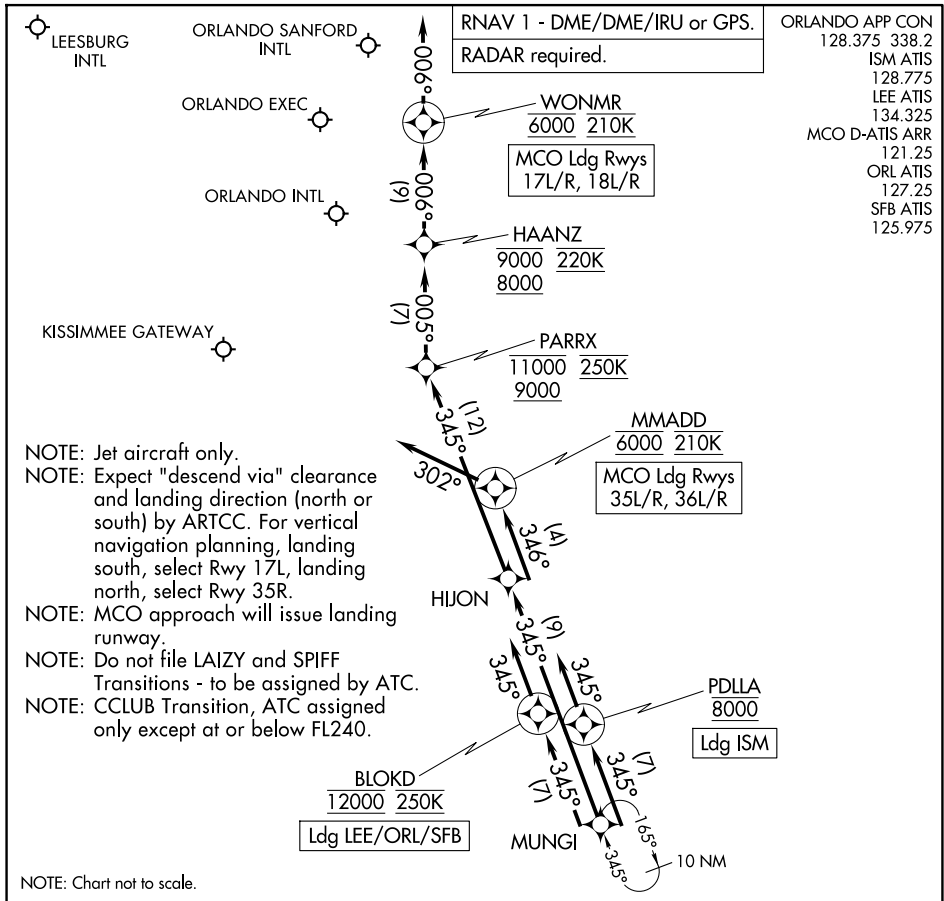


MUNGI ONE ARRIVAL (RNAV)

Arrival Routes

ORLANDO, FLORIDA



ARRIVAL ROUTE DESCRIPTION

MCO: From MUNGI on track 345° to HIJON.

LANDING MCO RUNWAYS 17L/R, 18L/R: From HIJON on track 345° to cross PARRX between 9000 and 11000 and at 250K, then on track 005° to cross HAANZ between 8000 and 9000 and at 220K, then on track 006° to cross WONMR at 6000 and at 210K, then on track 006°. Expect RADAR vectors to final approach course.

LANDING MCO RUNWAYS 35L/R, 36L/R: From HIJON on track 345° to cross MMADD at 6000 and at 210K, then on track 302°. Expect RADAR vectors to final approach course.

LANDING ISM: From MUNGI on track 345° to cross PDLLA at 8000, then on track 345°. Expect RADAR vectors to final approach course.

LANDING LEE/SFB/ORL: From MUNGI on track 345° to cross BLOKD at 12000 and at 250K, then on track 345°. Expect RADAR vectors to final approach course.

MUNGI ONE ARRIVAL (RNAV)

Arrival Routes

ORLANDO, FLORIDA