

FORT RUCKER, ALABAMA

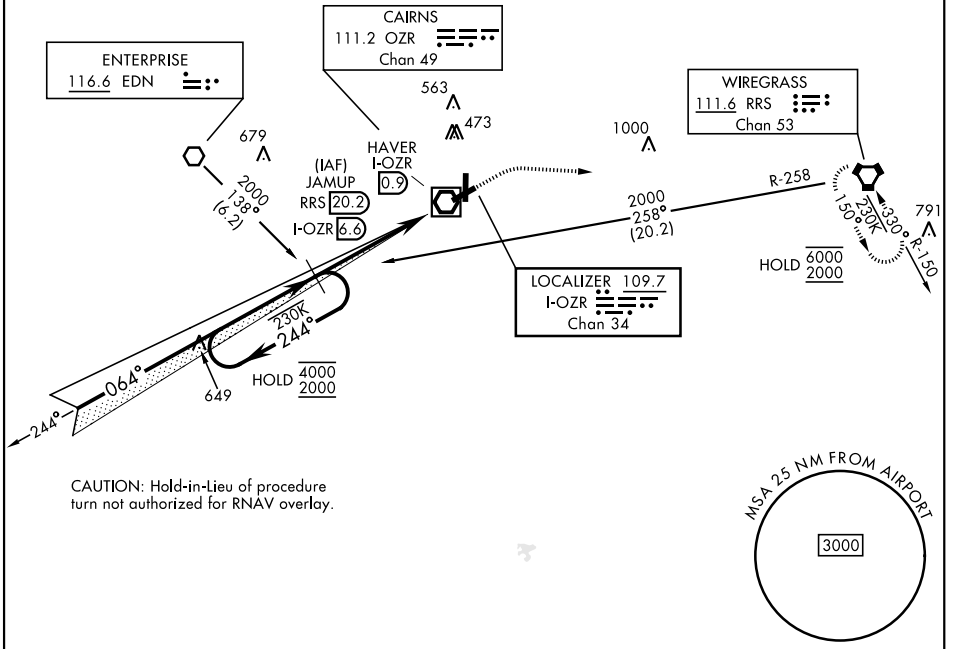
ILS or LOC RWY 6

LOC/DME I-OZR 109.7 Chan 34	APCH CRS 064°	Rwy Idg TDZE Arpt Elev 4546 298 301
---	-------------------------	---

[USA]

CAIRNS AAF (FORT RUCKER) (KOZR)

RADAR or DME required		MALSR	MISSED APPROACH: Climb to 800 then climbing right turn to 2000 direct RRS VORTAC and hold; or when directed by ATC, climb to 800 then climbing left turn to 2000 heading 290° within 10 NM (RADAR required).
*When ALS inop, increase RVR to 40, vis to 3/4 mile. **When ALS inop, increase CAT AB RVR to 55, vis to 1 mile, CAT CD vis to 1 1/8 miles.			
ATIS 111.2 316.15	APP CON * 220°-340° 133.45 239.275 341°-120° 125.4 327.125 121°-219° 133.75 270.35	TOWER * 135.2 (CTAF) 248.55	GND CON * 121.9 288.25



SE-4, 16 APR 2026 to 14 MAY 2026

SE-4, 16 APR 2026 to 14 MAY 2026

	800	2000	RRS	ELEV 301	TDZE 298
One Minute Holding Pattern 4000 ← 244° 2000 ← 064° 2000 GS 2.70° TCH 57	JAMUP RRS 20.2 I-OZR 6.6 I-OZR 2.4 HAVER I-OZR 0.9			CHINOOK HILL PAD D1 D2 TWR 81 4546 × 150 8025 × 150 36 64°	
CATEGORY	A	B	C	D	
S-ILS 6*	498/24		200	(200-1/2)	
S-LOC 6**	780/24	482 (500-1/2)	780/50	482 (500-1)	
CIRCLING	780-1 479 (500-1)	820-1 519 (600-1)	900-1 1/2 599 (600-1 1/2)	900-2 599 (600-2)	HIRL Rwy 6-24 MIRL Rwy 18-36

FORT RUCKER, ALABAMA

31°17'N-85°43'W

CAIRNS AAF (FORT RUCKER) (KOZR)

Amdt 1 16APR26

ILS or LOC RWY 6