

FORT RUCKER, ALABAMA

RNAV (GPS) RWY 36

CAIRNS AAF (FORT RUCKER) (KOZR)

WAAS CH 63110 W36A	APCH CRS 004°	Rwy Idg TDZE Arprt Elev	5025 298 301
--	-------------------------	-------------------------------	---

[USA]

RNP APCH - GPS

MISSED APPROACH: Climb to 2000 direct RKEMP and hold.

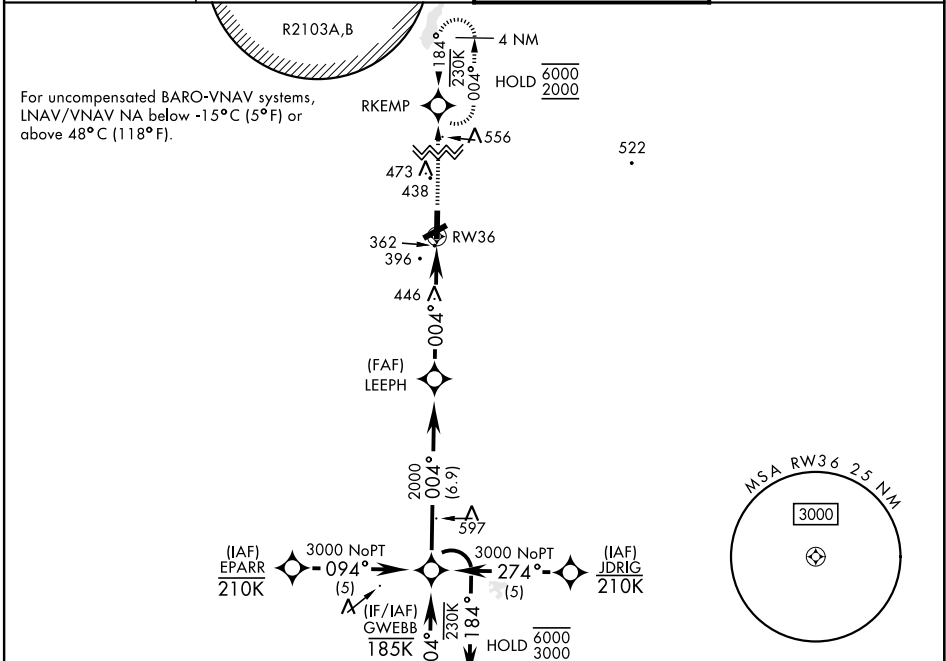
▼ *Circling visibility reduction by helicopters not authorized.

ATIS
111.2 316.15

APP CON★
220°-340° **133.45 239.275**
341°-120° **125.4 327.125**
121°-219° **133.75 270.35**

TOWER★
135.2 (CTAF) 248.55

GND CON★
121.9 288.25

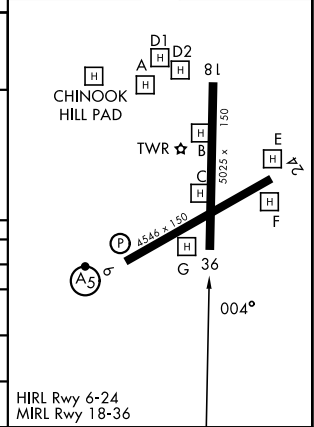
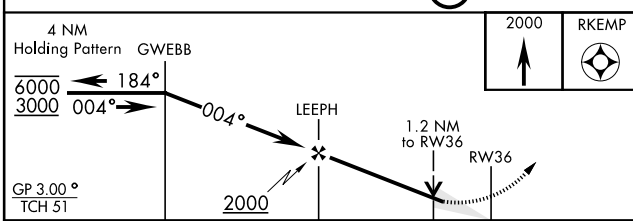


For uncompensated BARO-VNAV systems,
LNAV/VNAV NA below -1.5°C (5°F) or
above 48°C (118°F).

SE-4, 16 APR 2026 to 14 MAY 2026

SE-4, 16 APR 2026 to 14 MAY 2026

ELEV	301	TDZE	298
------	-----	------	-----



CATEGORY	A	B	C	D
LPV DA	548-3/4	250	(300-3/4)	
LNAV/ VNAV DA	557-3/4	259	(300-3/4)	
LNAV MDA	740-1	442 (500-1)	740-1 1/8	442 (500-1 1/8)
CIRCLING*	780-1 479 (500-1)	820-1 519 (600-1)	900-1 1/2 599 (600-1 1/2)	900-2 599 (600-2)

HIRL Rwy 6-24
MIRL Rwy 18-36

FORT RUCKER, ALABAMA

31° 17' N-85° 43' W

CAIRNS AAF (FORT RUCKER) (KOZR)

Amtd 2 26DEC24

RNAV (GPS) RWY 36