

VOR RWY 24

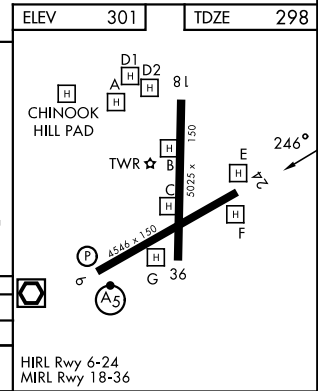
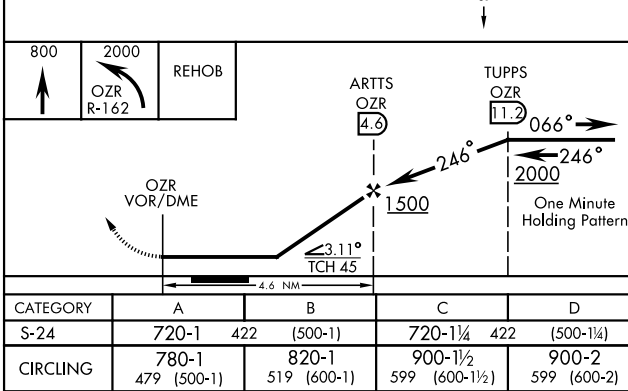
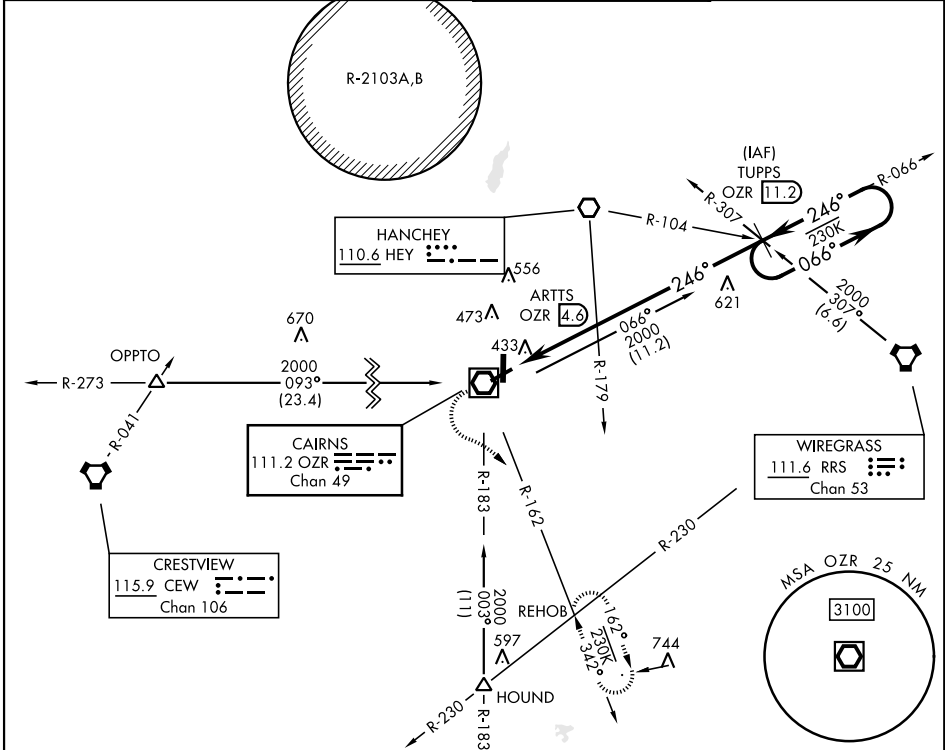
VOR/DME OZR 111.2 Chan 49	APCH CRS 246°	Rwy Idg TDZE 298 Arprt Elev 301
---	-------------------------	--

[USA]

CAIRNS AAF (FORT RUCKER) (KOZR)

Procedure NA at night.
Visibility reduction by helicopters NA.
MISSED APPROACH: Climb to 800 then climbing left turn to 2000 via OZR
 VOR/DME R-162 to REHOB INT and hold; or when directed by ATC, climb to 800 then climbing right turn heading 290° to 2000 within 10 NM (RADAR required).

ATIS 111.2 316.15	APP CON* 220°-340° 133.45 239.275 341°-120° 125.4 327.125 121°-219° 133.75 270.35	TOWER* 135.2 (CTAF) 248.55	GND CON* 121.9 288.25
-----------------------------	---	--------------------------------------	---------------------------------



ELEV	301	TDZE	298
------	-----	------	-----

CATEGORY	A	B	C	D
S-24	720-1 422 (500-1)	720-1 422 (500-1)	900-1 599 (600-1)	900-2 599 (600-2)
CIRCLING	780-1 479 (500-1)	820-1 519 (600-1)	900-1 599 (600-1)	900-2 599 (600-2)

FORT RUCKER, ALABAMA 31° 17' N-85° 43' W CAIRNS AAF (FORT RUCKER) (KOZR)

VOR RWY 24

SE-4, 16 APR 2026 to 14 MAY 2026

SE-4, 16 APR 2026 to 14 MAY 2026