

FORT RUCKER, ALABAMA

VOR RWY 6

VOR/DME OZR 111.2 Chan 49	APCH CRS 056°	Rwy Idg TDZE Arprt Elev 4546 298 301
---	-------------------------	--

[USA]

CAIRNS AAF (FORT RUCKER) (KOZR)

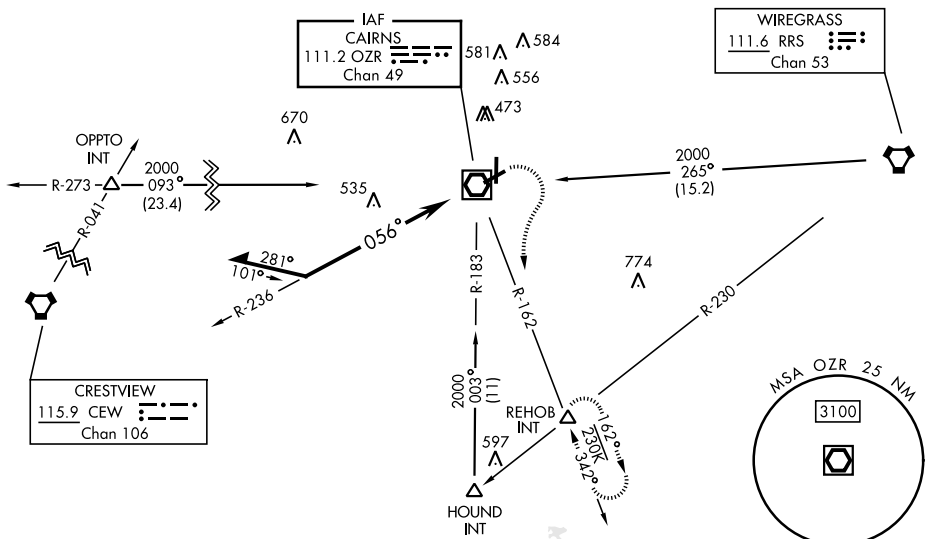
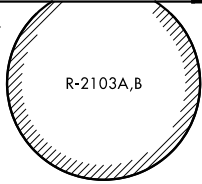
▼ * When ALS inop, increase CAT AB RVR to 55, vis to 1 mile; CAT CD vis to 1½ miles.
** Circling to RWY 24 at night not authorized.



MISSED APPROACH: Climbing right turn to 2000 via OZR VOR/DME R-162 to REHOB INT and hold; or when directed by ATC, climbing left turn to 2000 heading 290° within 10 NM (RADAR required).

ATIS 111.2 316.15	APP CON★ 220°-340° 133.45 239.275 341°-120° 125.4 327.125 121°-219° 133.75 270.35	TOWER★ 135.2 (CTAF) 248.55	GND CON★ 121.9 288.25
-----------------------------	---	--------------------------------------	---------------------------------

Visibility reduction by helicopters NA.



SE-4, 16 APR 2026 to 14 MAY 2026

SE-4, 16 APR 2026 to 14 MAY 2026

ELEV 301		TDZE 298		
2000 OZR R-162	REHOB INT △	Remain within 10 NM		
OZR VOR/DME		OZR VOR/DME		
2000		2000		
236°		056°		
0.3		0.3		
CATEGORY	A	B	C	D
S-6 *	840/24 542 (600-½)	840/60 542 (600-1½)		
CIRCLING **	840-1 539 (600-1)	900-1½ 599 (600-1½)	900-2 599 (600-2)	

FORT RUCKER, ALABAMA
Amdt 16 20APR23

31° 17'N-85° 43'W

CAIRNS AAF (FORT RUCKER) (KOZR)

VOR RWY 6