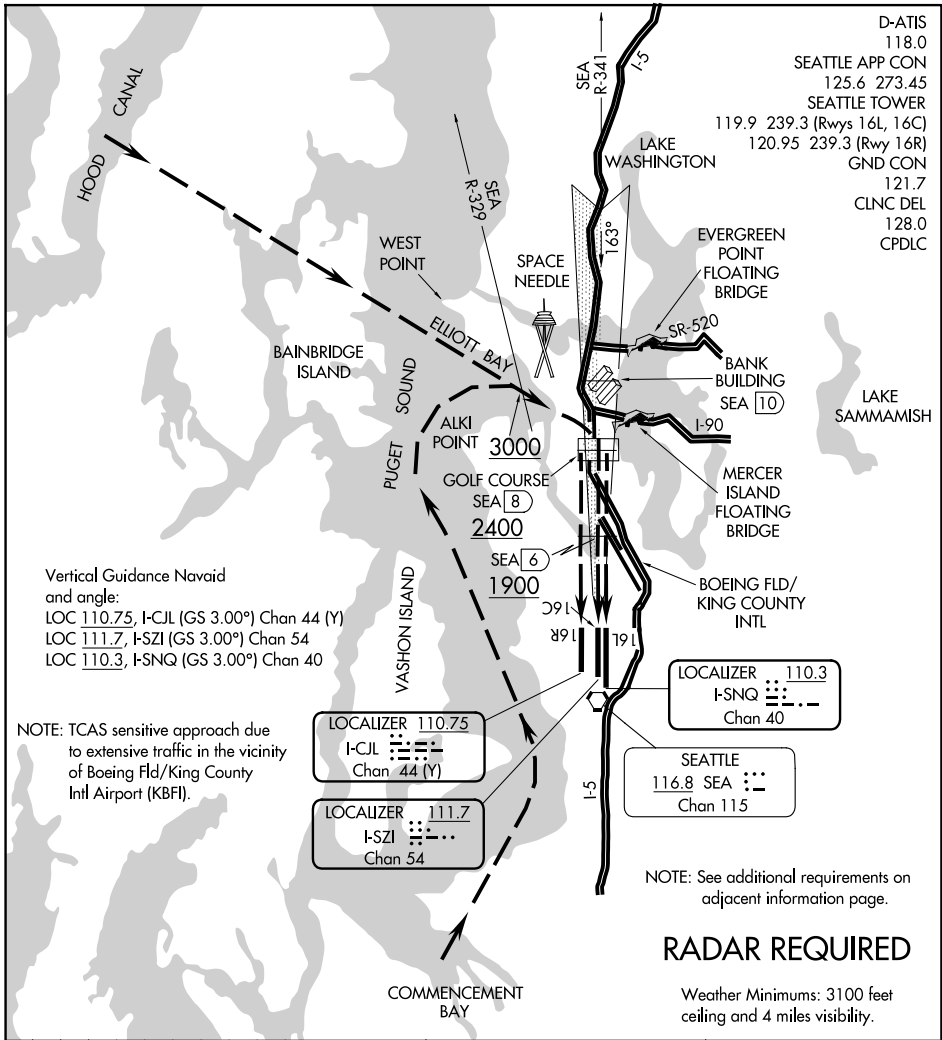


BAY VISUAL RWY 16R/C/L

AL-582 (FAA)

SEATTLE-TACOMA INTL (SEA)
SEATTLE, WASHINGTON



NW-1, 16 APR 2026 to 14 MAY 2026

NW-1, 16 APR 2026 to 14 MAY 2026

RADAR REQUIRED

Weather Minimums: 3100 feet ceiling and 4 miles visibility.



BAY VISUAL APPROACH RWY 16R/C/L

When the ceiling is at least 3100' and visibility is at least 4 miles, aircraft may be vectored over Puget Sound for a Bay Visual Runway 16R/C/L Approach. When cleared for a Bay Visual Approach: proceed inbound visually over the middle of Elliott Bay (via route depicted); intercept the Runway 16R/C/L localizer/SEA R-341 on Runway 16R/C/L extended centerline at the golf course (8 DME) and complete a straight in visual approach to the airport. On final approach, a descent profile of approximately 300' per mile may be made with reference to the altitudes shown at the visual checkpoints or associated DME/fix positions.

BAY VISUAL RWY 16R/C/L

Amdt 5 10MAR11

47°27'N-122°19'W

SEATTLE, WASHINGTON
SEATTLE-TACOMA INTL (SEA)