

HAWKZ EIGHT ARRIVAL (RNAV) Arrival Routes

ARRIVAL ROUTE DESCRIPTION

From HAWKZ on track 023° to LIINE.

LANDING RUNWAYS 16L/C/R: From LIINE on track 022° to cross PIKEZ between 12000 and 15000 and at 250K, then on track 001° to COFAY, then on track 351° to cross BREVE between 10000 and 11000 and at 250K, then on track 350° to cross NETTZ at or above 8000 and at 230K, then on track 344° to cross VASHN at 6000 and at 210K, then on track 344°. Expect RADAR vectors for RNAV or ILS approach.

LANDING RUNWAYS 34L/C/R: From LIINE on track 027° to cross FOOTT between 10000 and 12000 and at 250K, then on track 030° to cross GOALZ at or above 9000 and at 230K, then on track 014° to cross SONDR at 6000 and at 230K. Expect RNAV or ILS approach.

LOST COMMUNICATIONS

LANDING RUNWAY 16: At VASHN, proceed to GRIFY and then on the ILS RWY 16R approach.

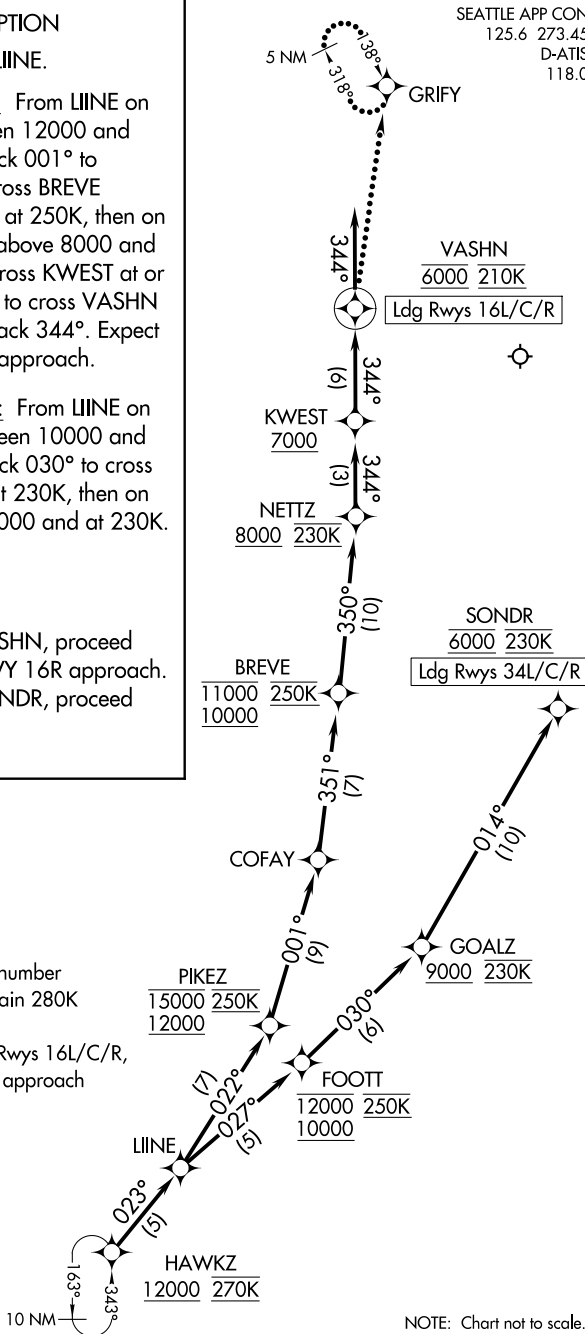
LANDING RUNWAY 34: At SONDR, proceed on the ILS RWY 34L approach.

RNAV 1 - DME/DME/IRU or GPS.

RADAR required.

NOTE: Jet aircraft descend via mach number until intercepting 280K. Maintain 280K until slowed by the STAR.

NOTE: For non-RNP aircraft landing Rwy 16L/C/R, expect RADAR vectors to final approach course prior to VASHN.



NOTE: Chart not to scale.

HAWKZ EIGHT ARRIVAL (RNAV) Arrival Routes