

RNAV (RNP) Z RWY 16C

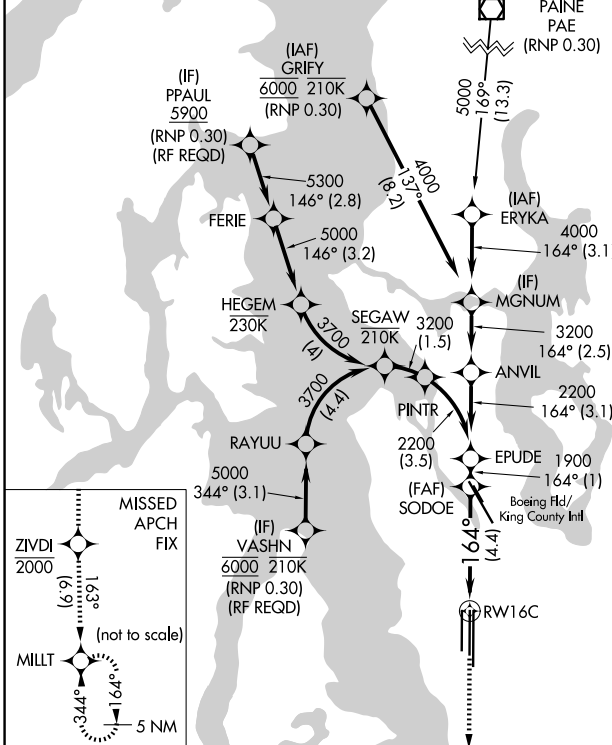
SEATTLE-TACOMA INTL (SEA)

APP CRS	Rwy Ldg	9426
164°	TDZE	430
	Apt Elev	433

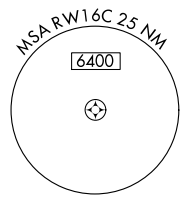
▽ For uncompensated Baro-VNAV systems, procedure NA below -6°C (22°F) or above 54°C (130°F). GPS required. See additional requirements on adjacent information page. For inop ALS, increase RNP 0.12 all Cats visibility to RVR 5200, and increase RNP 0.30 all Cats visibility to 1 3/8 SM.

ALSF-2
 MISSED APPROACH: Climb direct ZIVDI to cross ZIVDI at or below 2000, then climb to 5000 on track 163° to MILLT and hold, continue climb-in-hold to 5000.

D-ATIS	SEATTLE APP CON	SEATTLE TOWER	GND CON
118.0	133.65 273.45	119.9 239.3 (16L, 16C, 34C, 34R) 120.95 239.3 (16R, 34L)	121.7



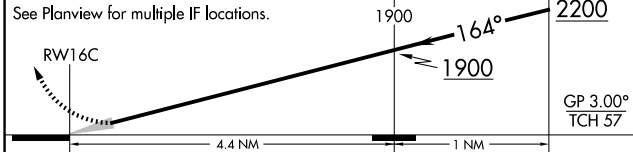
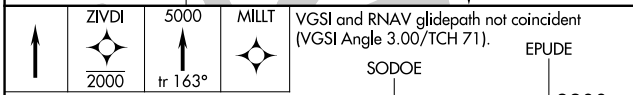
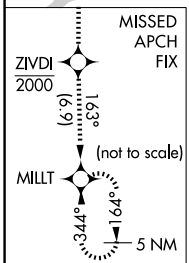
Procedure NA for arrival on PAE VOR/DME airway radials 163 CW 236.



RADAR REQUIRED

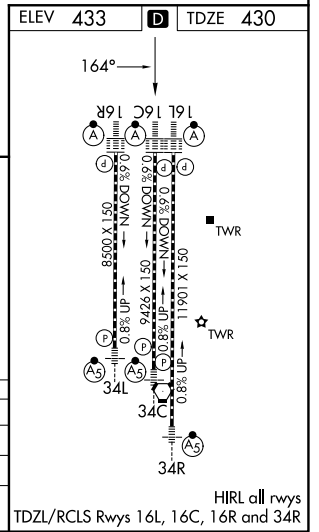
NW-1, 16 APR 2026 to 14 MAY 2026

NW-1, 16 APR 2026 to 14 MAY 2026



CATEGORY	A	B	C	D
RNP 0.12 DA		758/29	328 (400-%)	
RNP 0.30 DA		834/43	404 (500-%)	

AUTHORIZATION REQUIRED



HIRL all rwys
 TDZL/RCLS Rwys 16L, 16C, 16R and 34R