

KRAKN ONE ARRIVAL (RNAV) Arrival Routes

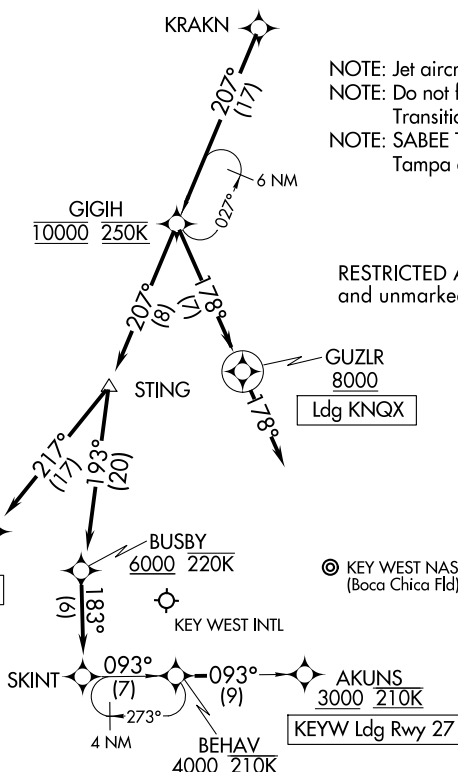
KEY WEST, FLORIDA

NAVY KEY WEST APP CON ★
 124.025 313.7
 EYW ATIS
 119.675
 KNQX ATIS ★
 307.025

RNAV 1 - DME/DME/IRU or GPS.
 RADAR required.

NOTE: Jet aircraft only.
 NOTE: Do not file ENDEW or KARTR
 Transitions - to be assigned by ATC.
 NOTE: SABEE Transition for traffic departing
 Tampa area only.

RESTRICTED AREA R-2916 - Caution cable
 and unmarked balloon to 14000 MSL.



NOTE: Chart not to scale.

ARRIVAL ROUTE DESCRIPTION

KEYW: From KRAKN on track 207° to cross GIGIH at 10000 and at 250K, then on track 207° to STING.

LANDING KEYW RUNWAY 9: From STING on track 217° to cross CHETS at or above 3000 and at 210K. Expect RNAV (GPS) RWY 9 approach.

LANDING KEYW RUNWAY 27: From STING on track 193° to cross BUSBY at or above 6000 and at or below 220K, then on track 183° to SKINT, then on track 093° to cross BEHAV at or above 4000 and at 210K, then on track 093° to cross AKUNS at or above 3000 and at 210K. Expect RNAV (GPS) RWY 27 approach.

LANDING KNQX: From KRAKN on track 207° to cross GIGIH at 10000 and at 250 K, then on track 178° to cross GUZLR at or above 8000, then on track 178°. Expect RADAR vectors to final approach course.