

WAAS CH 40405 W09A	APP CRS 093°	Rwy Ldg 4801 TDZE 3 Apt Elev 3
--	------------------------	---

RNAV (GPS) RWY 9

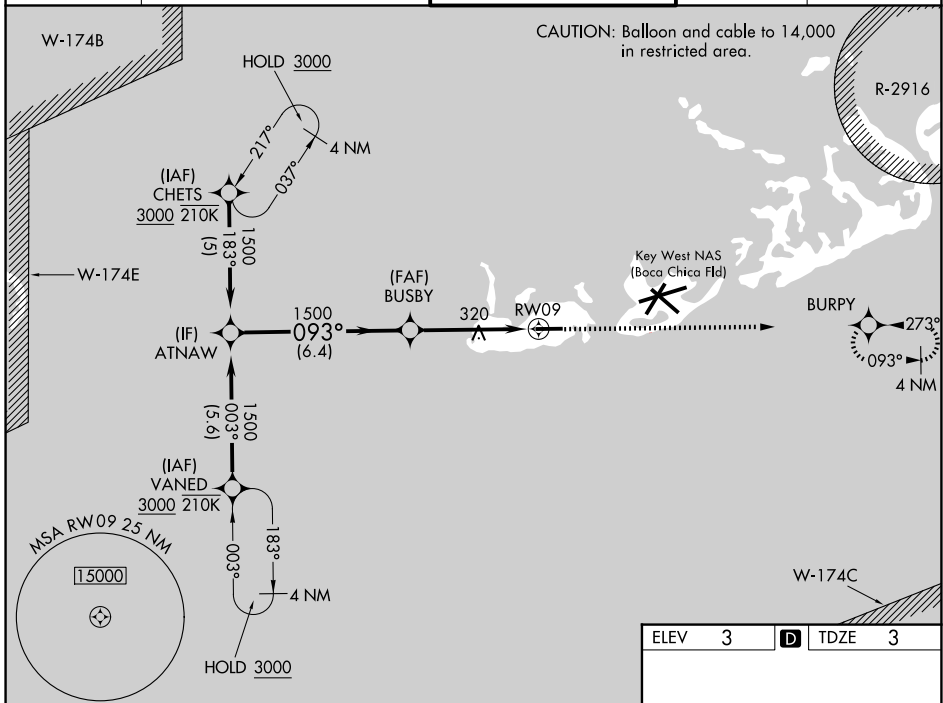
KEY WEST INTL (EYW)

RNP APCH-GPS.

▼ For uncompensated Baro-VNAV systems, LNAV/VNAV NA below 12°C or above 54°C.
▲ Rwy 9 helicopter visibility reduction below 3/4 SM NA. Baro-VNAV and VDP NA when using
W NQX altimeter setting. When local altimeter setting not received, use NQX altimeter setting.

MISSED APPROACH:
Climb to 2000 direct BURPY and hold.

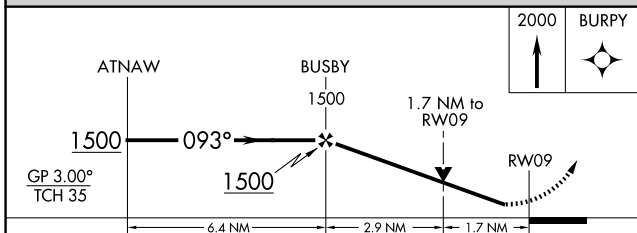
ATIS 119.675	NAVY KEY WEST APP CON * 124.025 313.7	KEY WEST TOWER * 118.2 (CTAF) 0 257.8	GND CON 121.9	UNICOM 122.95
------------------------	---	---	-------------------------	-------------------------



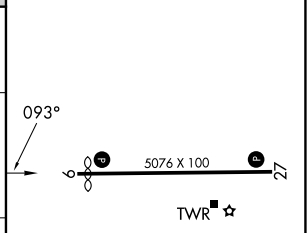
SE-3, 16 APR 2026 to 14 MAY 2026

SE-3, 16 APR 2026 to 14 MAY 2026

ELEV 3	D TDZE 3
---------------	------------------------



CATEGORY	A	B	C	D
LPV DA	253-1 250 (300-1)			
LNAV/VNAV DA	425-1¼ 422 (500-1¼)			
LNAV MDA	580-1 577 (600-1)	580-1½ 577 (600-1½)		
CIRCLING	580-1 577 (600-1)	620-1¾ 617 (700-1¾)	620-2 617 (700-2)	



MIRL Rwy 9-27 **1**
REIL Rws 9 and 27 **1**