

LOC/DME I-BED 111.15 Chan 48 (Y)	APP CRS 113°	Rwy Ldg 7011 TDZE 132 Apt Elev 132
---	------------------------	--

ILS or LOC RWY 11

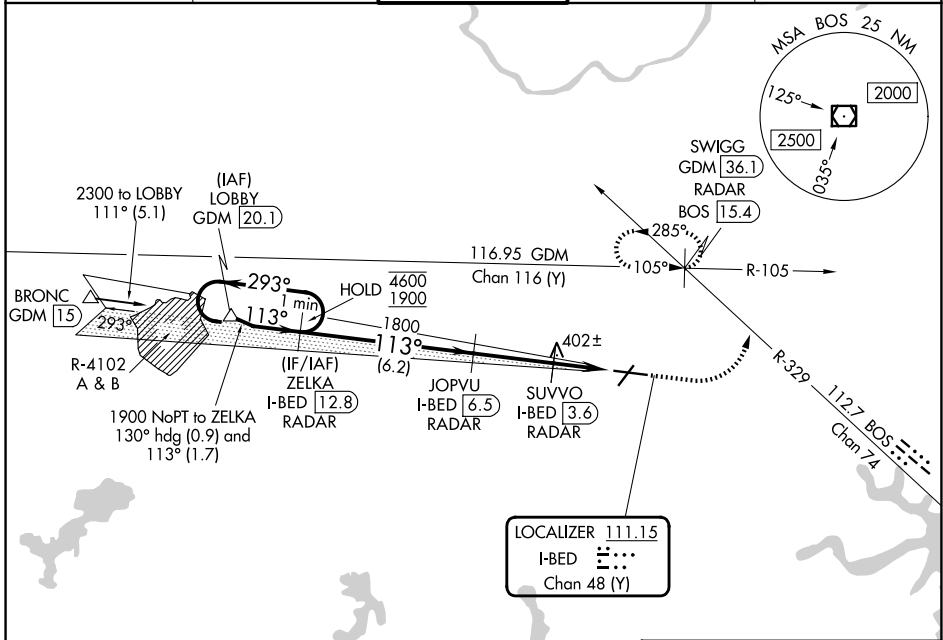
LAURENCE G HANSCOM FLD (BED)

RADAR required for procedure entry.
DME or RADAR required.



MISSED APPROACH: Climb to 1000 then climbing left turn to 2000 on heading 060° and on BOS VOR/DME R-329 to SWIGG/GDM 36.1 DME/RADAR and hold, continue climb-in-hold to 2000.

ATIS 124.6	BOSTON APP CON 124.4 279.6	HANSCOM TOWER★ 118.5 (CTAF) 0 257.2	GND CON 121.7	UNICOM 122.95
----------------------	--------------------------------------	---	-------------------------	-------------------------



NE-1, 16 APR 2026 to 14 MAY 2026

NE-1, 16 APR 2026 to 14 MAY 2026

ELEV 132		D TDZE 132		
VGSI and ILS glidepath not coincident (VGSI Angle 3.00/TCH 67). One Minute Holding Pattern ZELKA I-BED 12.8 RADAR JOPVU I-BED 6.5 RADAR SUVVU I-BED 3.6 RADAR *I-BED 2.9 I-BED 1.4 *LOC only. BOS R-329 SWIGG GDM 36.1 RADAR GS 3.00° TCH 50 4600 1900 293° 113° 113° 1800 880 6.2 NM 2.9 NM 0.8 1.4 NM				
CATEGORY	A	B	C	D
S-ILS 11	383/24 251 (300-½)			
S-LOC 11	660/24 528 (600-½)	660/55 528 (600-1)		
CIRCLING	720-1 588 (600-1)	880-2¼ 748 (800-2¼)	920-2½ 788 (800-2½)	
MIRL Rwy 5-23 HIRL Rwy 11-29 REIL Rwys 5 and 23				
FAF to MAP 5.1 NM				
Knots 60 90 120 150 180				
Min:Sec 5:06 3:24 2:33 2:02 1:42				