

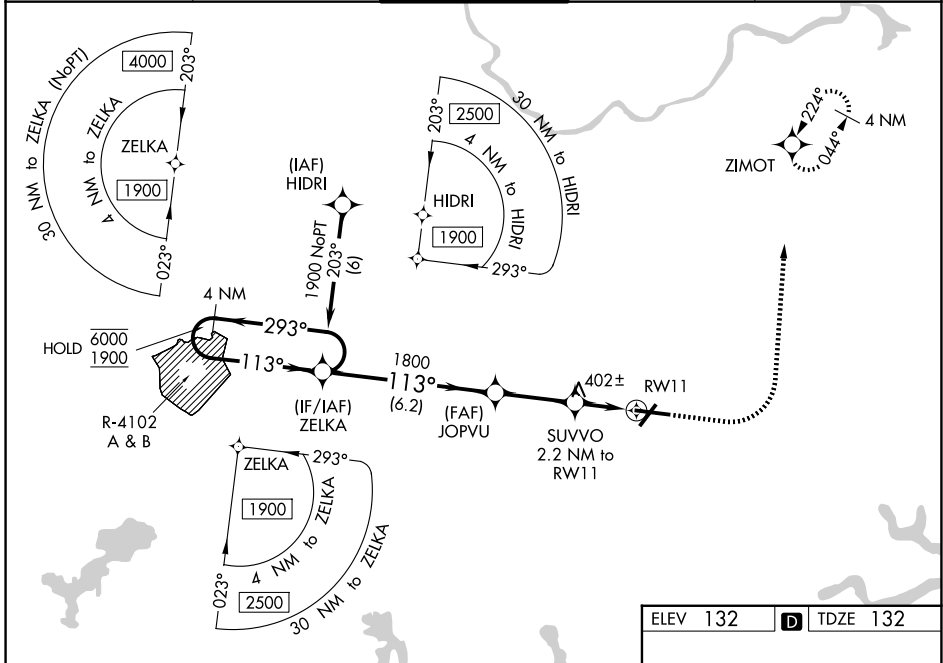
WAAS CH 87000 W11A	APP CRS 113°	Rwy Ldg TDZE 132 Apt Elev 132	7011
----------------------------------------	------------------------	---------------------------------------------------	-------------

RNAV (GPS) RWY 11

LAURENCE G HANSCOM FLD (BED)

RNP APCH - GPS.		MALSR	MISSED APPROACH: Climb to 1000 then climbing left turn to 2000 direct ZIMOT and hold.
▼	For uncompensated Baro-VNAV systems, LNAV/VNAV NA below -19° C or above 54° C.		
▲	For inop ALS, increase all LNAV/VNAV Cats visibility to RVR 5500.		

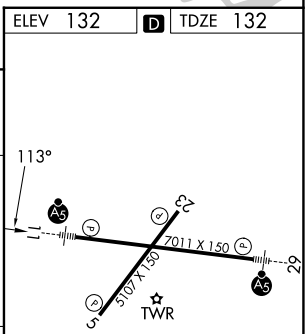
ATIS 124.6	BOSTON APP CON 124.4 279.6	HANSCOM TOWER ★ 118.5 (CTAF) 0 257.2	GND CON 121.7	UNICOM 122.95
----------------------	--------------------------------------	-------------------------------------------------------	-------------------------	-------------------------



NE-1, 16 APR 2026 to 14 MAY 2026

NE-1, 16 APR 2026 to 14 MAY 2026

VGSI and RNAV glidepath not coincident (VGSI Angle 3.00/TCH 67).		1000	2000	ZIMOT
4 NM Holding Pattern				
6000 ← 293°		ZELKA		
1900 → 113°		JOPVU		
GP 3.00°		SUVVO 2.2 NM to RWY 11		
TCH 50		1.5 NM to RWY 11		
		RWY 11		
		880		
		0.8 1.5 NM		
CATEGORY	A	B	C	D
LPV DA		384/24	252 (300-½)	
LNAV/VNAV DA		474/30	342 (400-¾)	
LNAV MDA	660/24	528 (600-½)	660/55	528 (600-1)
CIRCLING	720-1	588 (600-1)	880-2¼ 748 (800-2¼)	920-2½ 788 (800-2½)



MIRL Rwy 5-23
HIRL Rwy 11-29
REIL Rws 5 and 23