

|  |                        |   |
|--|------------------------|---|
| WAAS<br>CH <b>97412</b><br><b>W36A</b> | APP CRS<br><b>004°</b> | Rwy Ldg <b>5151</b><br>TDZE <b>343</b><br>Apt Elev <b>344</b> |
|--|------------------------|---|

# RNAV (GPS) RWY 36

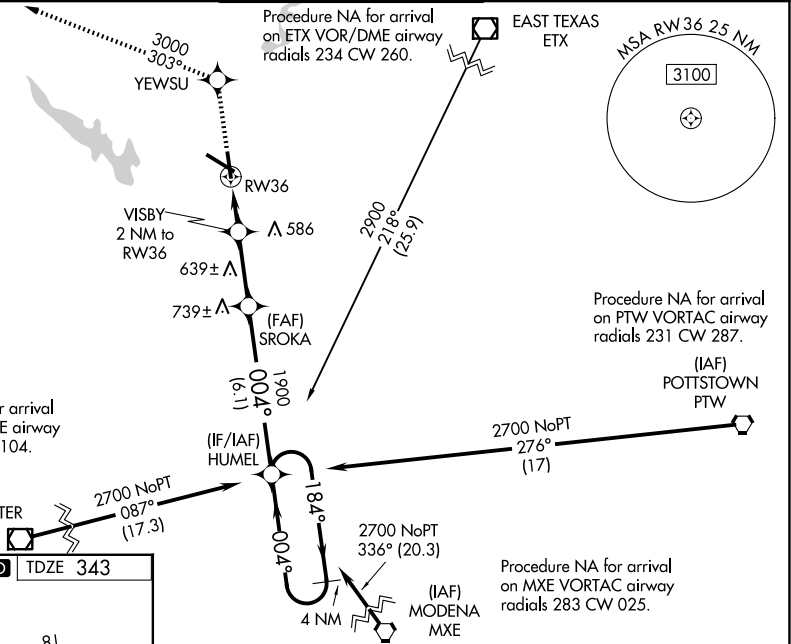
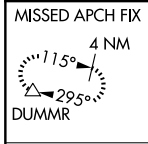
READING RGNL/CARL A SPAATZ FLD (RDG)

**⚠** Night landing: Rwy 18, 31 NA. Inoperative table does not apply. Baro-VNAV NA when using Harrisburg Intl altimeter setting. For uncompensated Baro-VNAV systems, LNAV/VNAV NA below -15°C (5°F) or above 48°C (118°F). DME/DME RNP-0.3 NA. When local altimeter setting not received, use Harrisburg Intl altimeter setting and increase LPV DA to 715 feet and visibility ¼ SM, increase LNAV/VNAV DA to 928 feet and visibility ¼ SM and increase all MDAs 100 feet, and LNAV Cats C and D and Circling Cats B and C visibility ¼ SM.

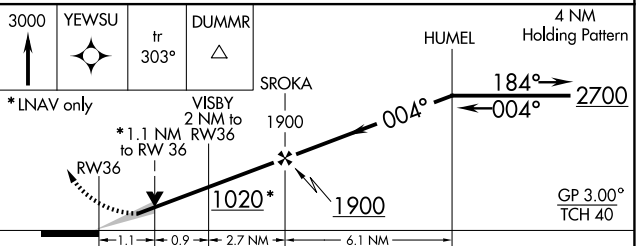
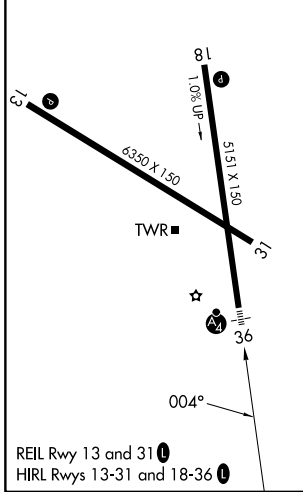
**MALSIF**

**MISSED APPROACH:**  
Climb to 3000 direct YEWSU and via 303° to DUMMR and hold, continue climb-in-hold to 3000.

|                      |   |  |                         |                         |
|----------------------|---|--|-------------------------|-------------------------|
| ATIS<br><b>127.1</b> | HARRISBURG APP CON<br><b>125.15 257.9</b> | READING TOWER ★<br><b>119.9 (CTAF) 0 288.3</b> | GND CON<br><b>121.9</b> | UNICOM<br><b>122.95</b> |
|----------------------|---|--|-------------------------|-------------------------|



|          |          |          |
|----------|----------|----------|
| ELEV 344 | <b>D</b> | TDZE 343 |
|----------|----------|----------|



|              |                     |                    |                       |                      |
|--------------|---------------------|--------------------|-----------------------|----------------------|
| CATEGORY     | A                   | B                  | C                     | D                    |
| LPV DA       | 622-1 279 (300-1)   |                    |                       |                      |
| LNAV/VNAV DA | 835-1¾ 492 (500-1¾) |                    |                       |                      |
| LNAV MDA     | 740-1 397 (400-1)   |                    |                       | 740-1½ 397 (400-1½)  |
| CIRCLING     | 1020-1 676 (700-1)  | 1080-1 736 (800-1) | 1280-2¾ 936 (1000-2¾) | 1660-3 1316 (1400-3) |

NE-4, 16 APR 2026 to 14 MAY 2026

NE-4, 16 APR 2026 to 14 MAY 2026