

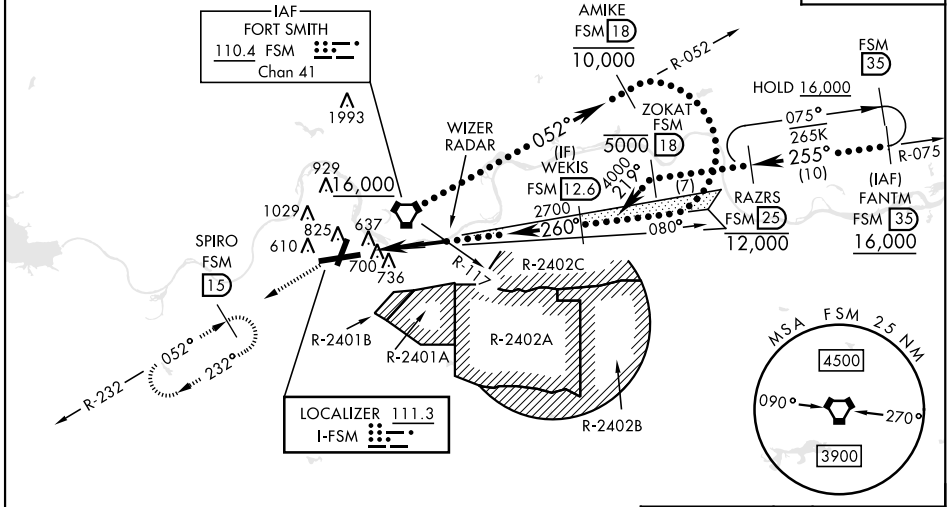
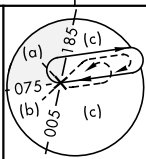
HI-ILS Y or LOC Y RWY 26

LOC I-FSM 111.3	APCH CRS 260°	Rwy ldg TDZE Arprt Elev 9317 448 469	[USAF] FORT SMITH RGNL (EBBING FLD ANGB) (KFSM)
DME required		MALSR 	MISSED APPROACH: Climb to 1400 then climbing left turn to 4000 on heading 224° and FSM VORTAC R-232 to SPIRO/FSM (15 DME) and hold. Continue climb in hold to 4000.
<p>▼ * When ALS inop, increase CAT E RVR to 40. ** When ALS inop, increase CAT CDE vis to 1½ miles. ▲ NA when control tower closed.</p>			

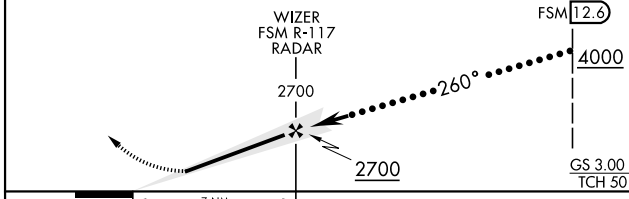
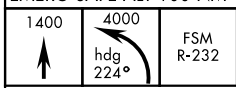
ATIS 124.775	RAZORBACK APP CON * 120.9 343.75	TOWER* 118.3 (CTAF) 0 323.175	GND CON 121.9 275.8	CLNC DEL 133.85 278.3	ASR
------------------------	--	---	-------------------------------	---------------------------------	-----

*** Circling not authorized for CAT E NW of Rwy 8 and Rwy 20.
 Circling not authorized for CAT E when R-2401B active.
 Circling Rwy 20 and Rwy 26 not authorized at night.
 RVR 1800 Authorized with use of FD or AP or HUD to DA.

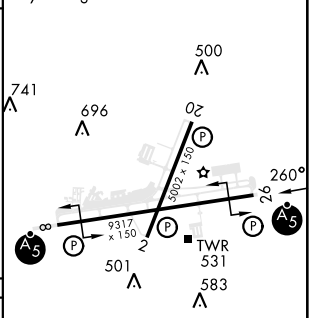
Procedure not authorized for arrivals on FSM VORTAC Airway Radials 359 CW 105.



EMERG SAFE ALT 100 NM 4500 FROM FSM VORTAC



ELEV 469	TDZE 448
Rwy 02 ldg 5001'	618
Rwy 20 ldg 5001'	



CATEGORY	C	D	E
S-ILS 26 *	648/24	200 (200-½)	
S-LOC 26 **	960-55	512 (600-1)	
CIRCLING ***	1400-2¾ 931 (1000-2¾)	1400-3	931 (1000-3)

HIRL Rwy 8-26	
MIRL Rwy 2-20	
FAF to MAP 7 NM	
Knots	120 140 160 180 200
Min:Sec	3:30 3:00 2:38 2:20 2:06

HI-ILS Y or LOC Y RWY 26

SC-1, 16 APR 2026 to 14 MAY 2026

SC-1, 16 APR 2026 to 14 MAY 2026