

HI-VOR Y or TACAN Y RWY 26

VORTAC FSM 110.4 Chan 41	APCH CRS 225°	Rwy ldg TDZE Arprt Elev 9317 448 469
--	-------------------------	--

[USAF] FORT SMITH RGNL (EBBING FLD ANGB) (KFMS)

DME required
 ▼ *Circling not authorized for CAT E NW of Rwy 8 and Rwy 20.

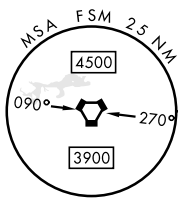
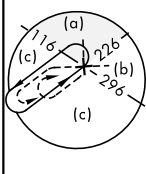
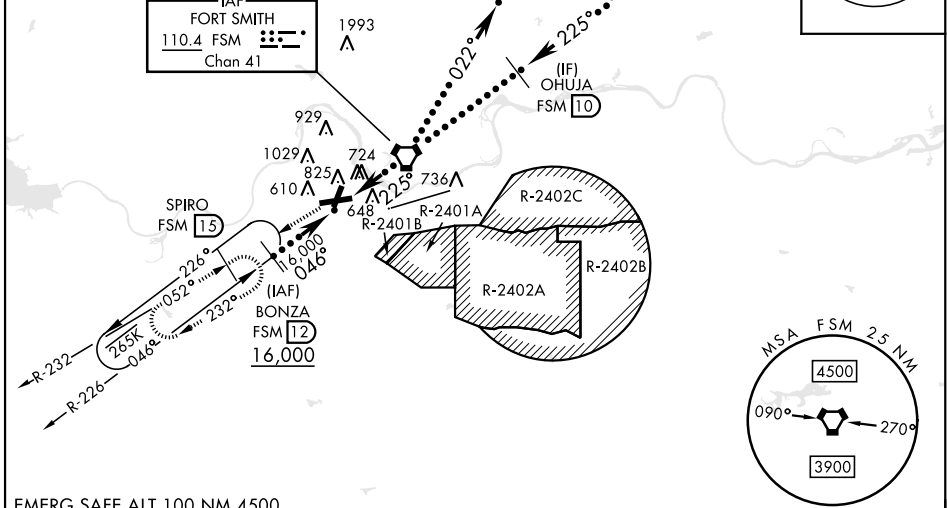


MISSED APPROACH: Climb to 4000 on FSM VORTAC R-232 to SPIRO (FSM R-232/15 DME) and hold, continue climb in hold to 4000.

ATIS 124.775	RAZORBACK APP CON * 120.9 343.75	TOWER * 118.3 (CTAF) 0 323.175	GND CON 121.9 275.8	CLNC DEL 133.85 278.3	ASR
------------------------	--	--	-------------------------------	---------------------------------	-----

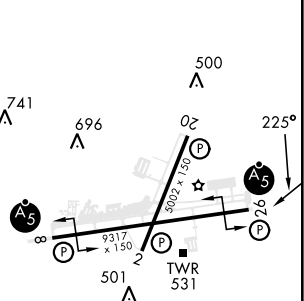
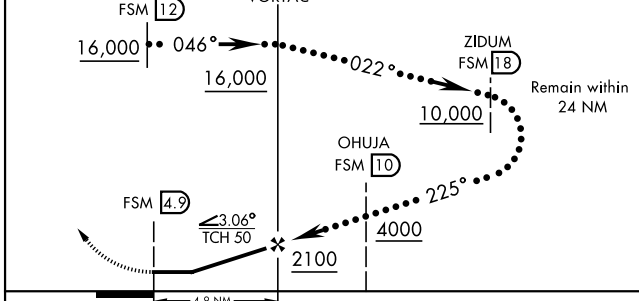
Straight-In Rwy 26 not authorized at night.
 Circling to Rwy 20 or Rwy 26 not authorized at night.
 Rwy 26 Helicopter visibility reduction below 1 mile not authorized.

Procedure not authorized for arrival on FSM VORTAC R-359 CW R-036.



EMERG SAFE ALT 100 NM 4500

4000 ↑ FSM R-232	SPIRO FSM 15	ELEV 469	TDZE 448
		Rwy 02 ldg 5001'	618
		Rwy 20 ldg 5001'	Λ



CATEGORY	C	D	E
S-26	980-1½	532 (600-1½)	
CIRCLING *	1400-2¾ 931 (1000-2¾)	1400-3 931 (1000-3)	1400-3 931 (1000-3)

HIRL Rwy 8-26
 MRL Rwy 2-20

HI-VOR Y or TACAN Y RWY 26

SC-1, 16 APR 2026 to 14 MAY 2026

SC-1, 16 APR 2026 to 14 MAY 2026